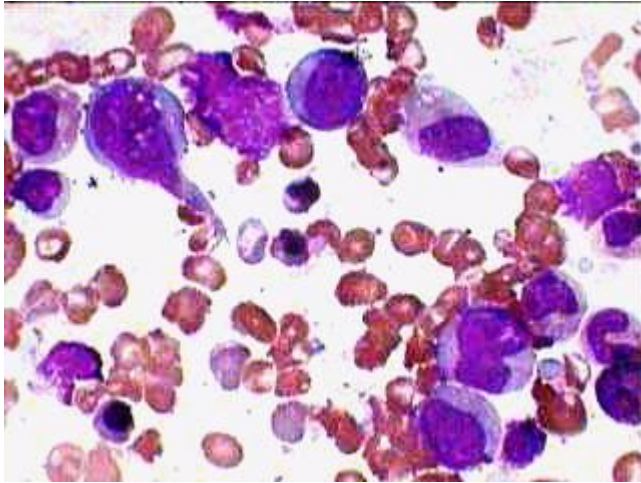




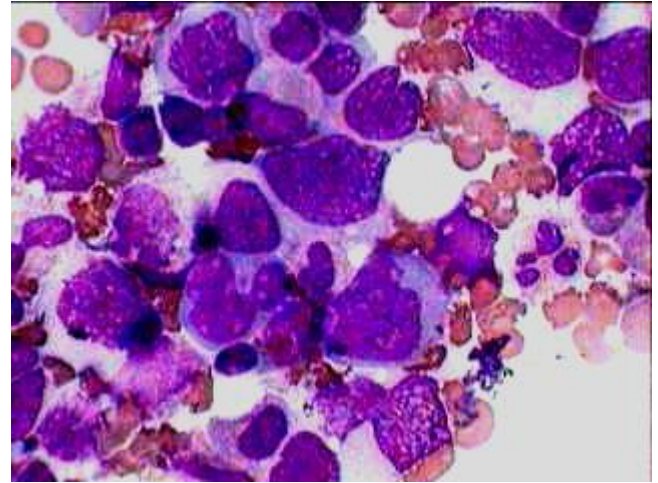
Estd. 1999

www.pathoindia.com

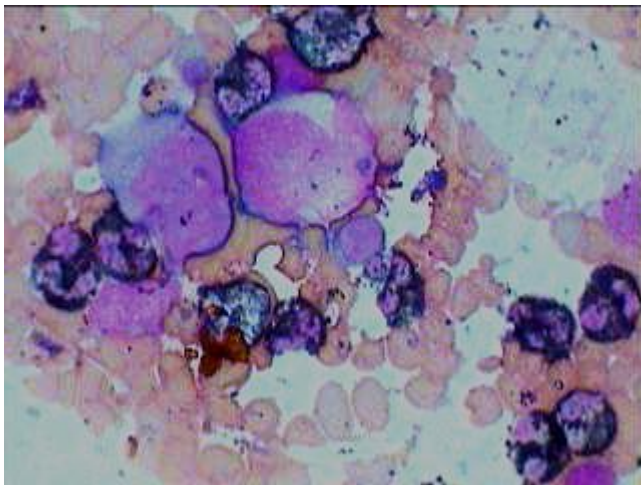
## Large cell lymphoma (histio- monocytic type) Infiltration in BM.



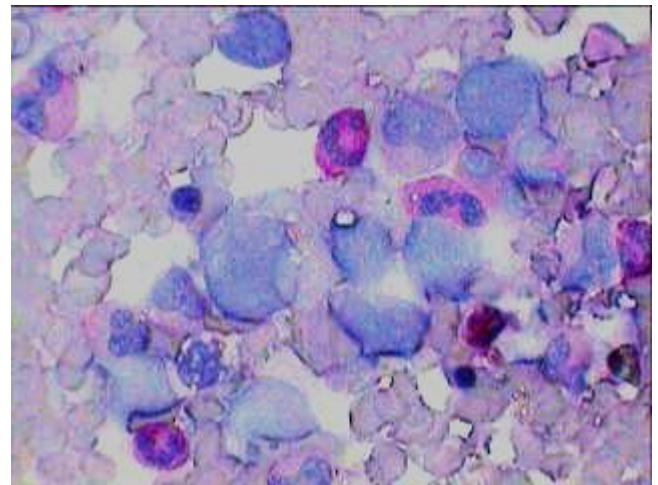
B.Marrow showing typical monocytohistiocytic cell along with few mononuclear cells and other haemopoietic cells in a known case of Large cell Lymphoma.



Same case as on the left. This field showing heavy infiltration by large histiocytic mononuclear cells infiltrating the marrow.



Two monocytohistiocytic cells are MPO negative with many peroxidase positive myeloid cells



Monocytohistiocytic cells are PAS negative while mature myeloid cells are diffuse PAS positive.