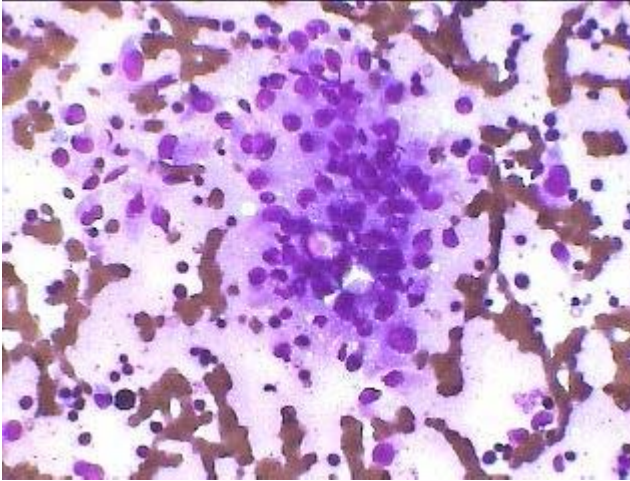
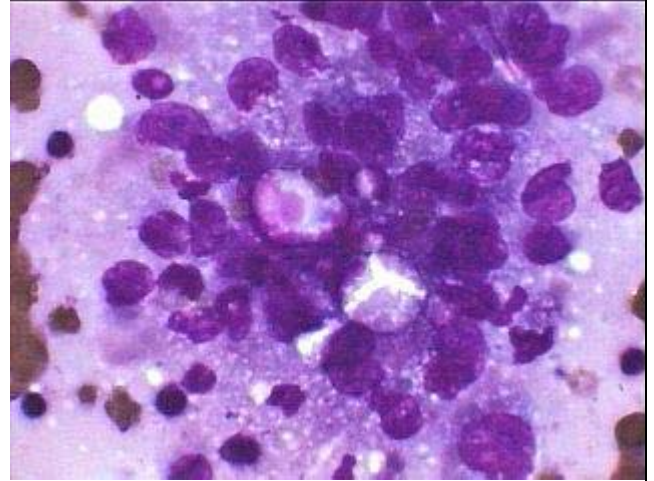


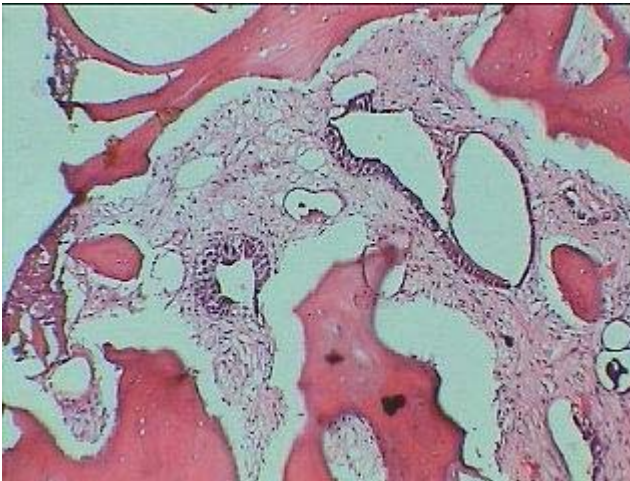
Secondaries (Metastasis) in BM



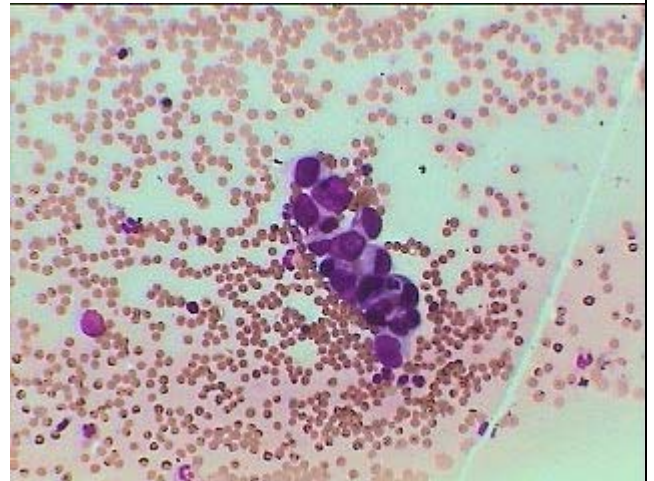
A group of Non-Haemopoietic cells as seen in the Marrow aspiration under HP.-Giemsa stained.



Same as in the left under oil Immersion showing large pleomorphic Neoplastic cells with cytoplasmic vacuolization.



H & E stained showing Glandular formation of metastatic cells of adenocarcinoma in BM biopsy under HP.



A group of metastatic Epithelial Neoplastic cells as tumor emboli in the marrow aspiration under HP-Giemsa stain