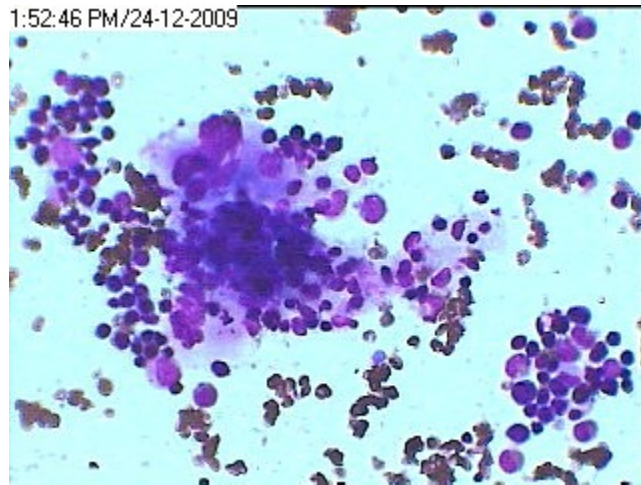


Myeloid dysplasia (RAEB)

A young girl of 14 years Having peripheral pancytopenia revealed Myeloid Dysplasia (RAEB) on BM examination. Since MDS is rarely found in children it is being depicted.



A group of dysplastic megakaryocytes in LP image of Myeloid dysplasia (RAEB)



Dysplastic Myeloid blasts in the center along with mature red cells auto-agglutination in RAEB



Dysplastic Erythroid precursors (two just left of the center) along with hyperplastic erythropoiesis and 5 myeloid blasts.



Myeloid dysplasia (RAEB) showing dysplastic myeloid cells (both Mature and Immature cells)