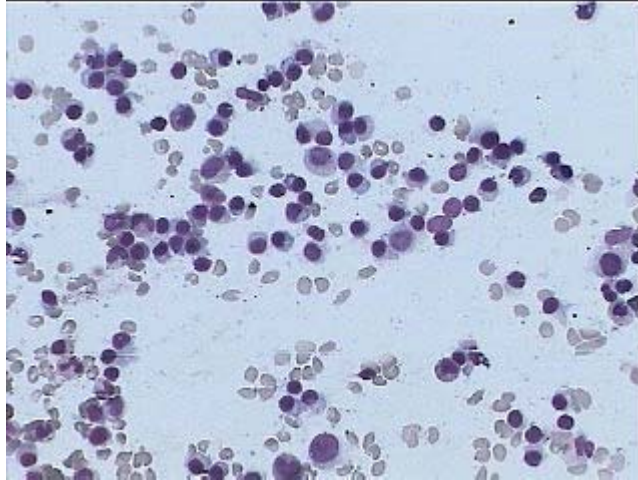
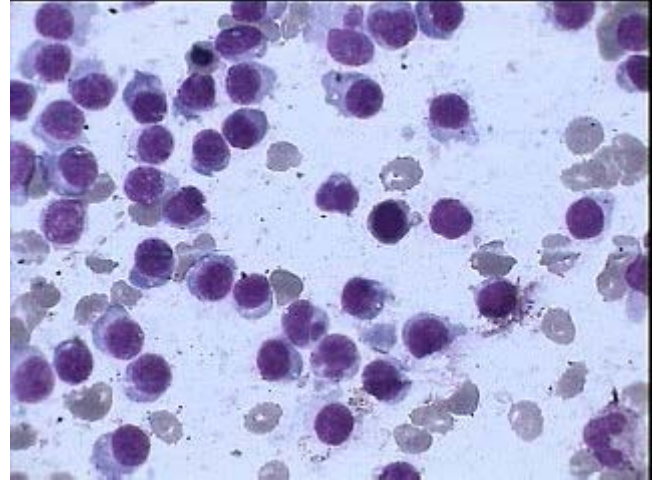


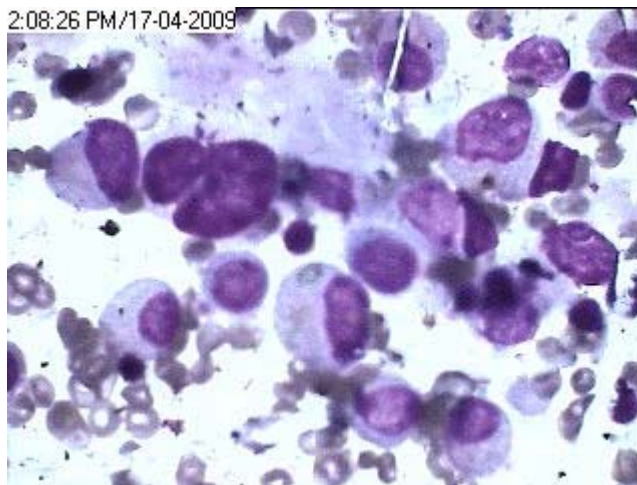
Plasmcytoid Lymphoma spill-over in Bone Marrow



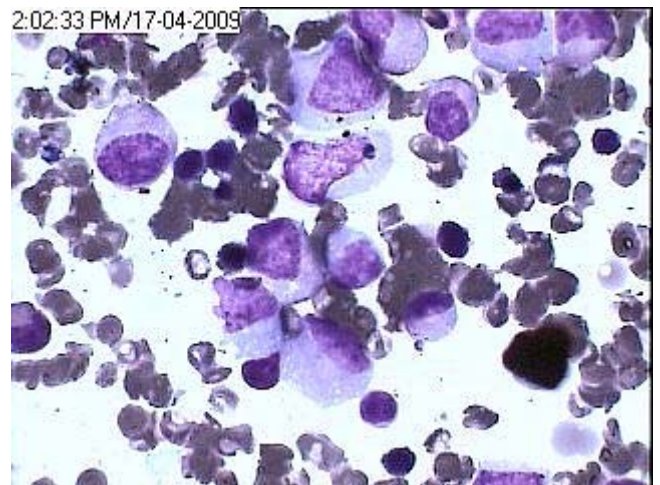
Lympho-Plasmacytoid cell Lymphoma showing both diffuse and focal infiltration (Lymphoma spillover) in the BM-HP view.



Lymphoplasmacytoid cell lymphoma spill over in BM – Oil Imm view- showing almost all typical plasmacytoid lymphocytes having monomorphic appearance..



Highly pleomorphic and large Lymphocytoid plasma cell Lymphoma spillover in the marrow. Both the lower pictures are from same patient.



Large neoplastic plasmacytoid lymphoid cells from Lympho plasmacytoid Lymphoma infiltrating the marrow