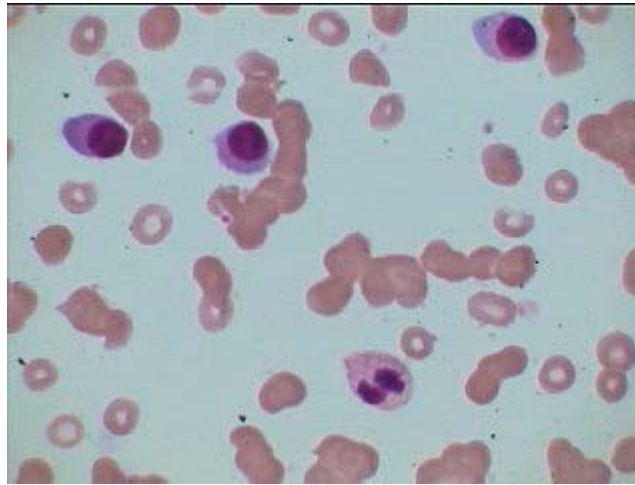
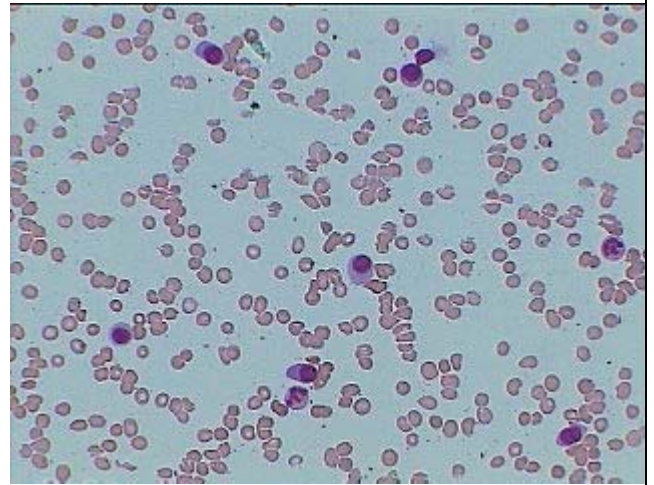


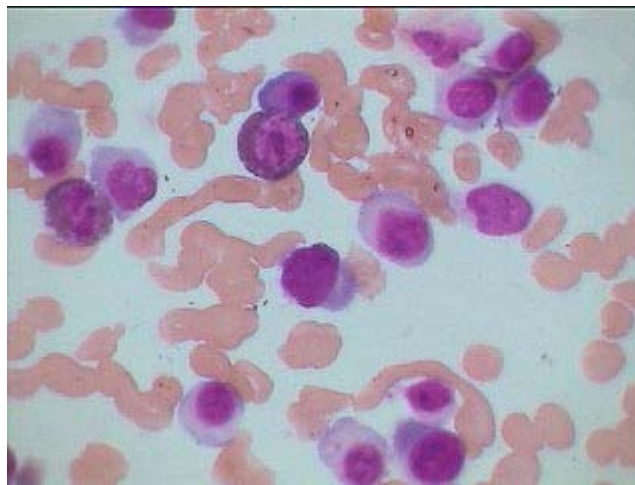
Plasma cell Leukemia



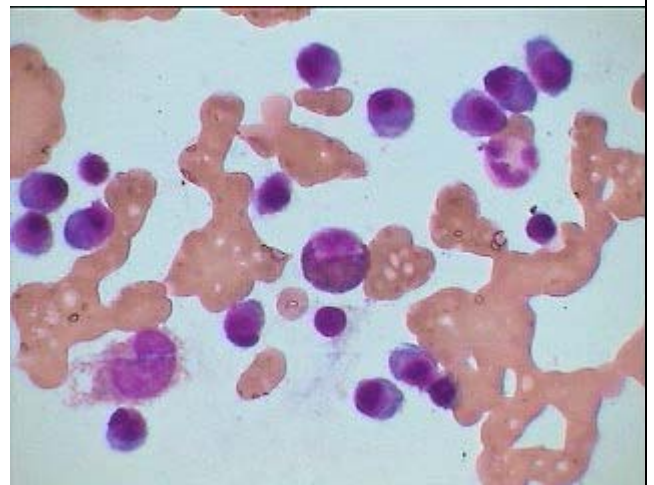
3 Plasma cells in PB Smear (Oil Imm view) along with one Neutrophil. Red cells showing mild rouleux formation



HP view of Plasma cell Leukemia in PB Smear, showing 4 plasma cells and no evidence of rouleux formation.



Oil Immersion view of Plasma cell leukemia-- BM of the same patient.



BM of Plasma cell leukemia with significant Rouleux formation in red cells