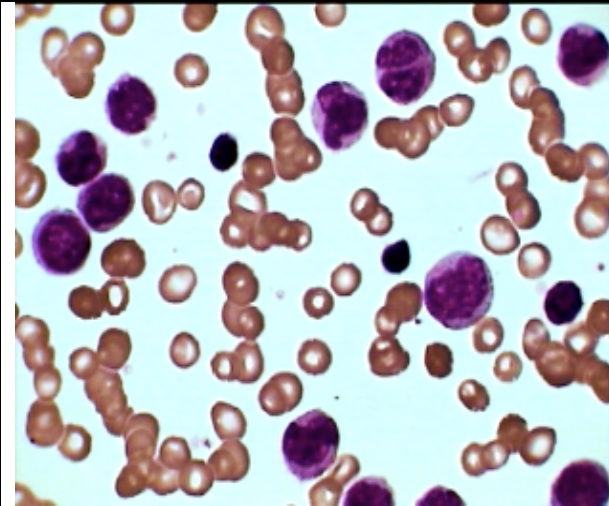
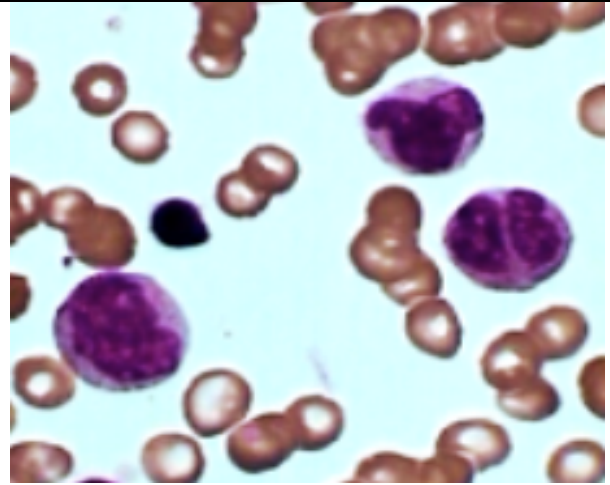


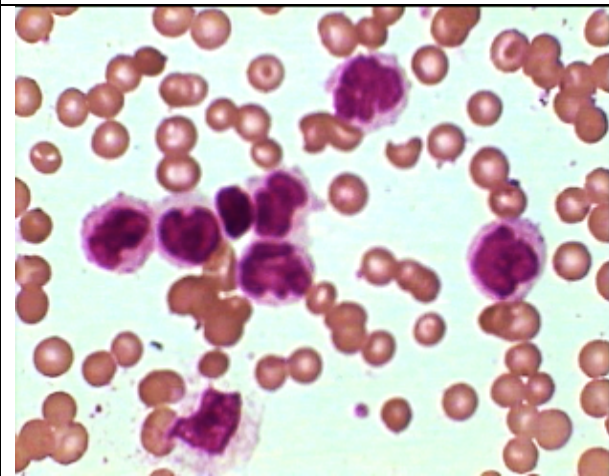
Highly Dysplastic APML In PB Smear



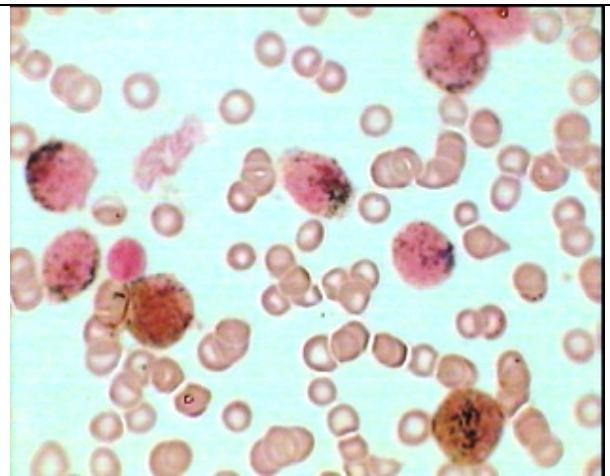
Large Atypical cells with Convoluted nuclei
And granular cytoplasm-- all appear to be
promyelocytes.



Three large cells in higher magnification
showing abnormal nuclear lobulation also
attempted nuclear division and distinct
nucleoli (Atypical Promyelocytes)



Same PB smear with thrombocytopenia in
APML. These cells are likely be confused
with neutrophils (Stab and Segmented)



MPO stain of the same PB Smear showing
intense peroxidase positivity of the cytoplasm.