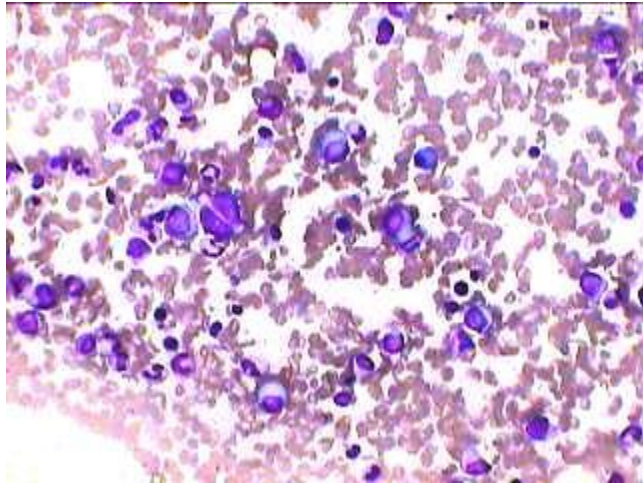
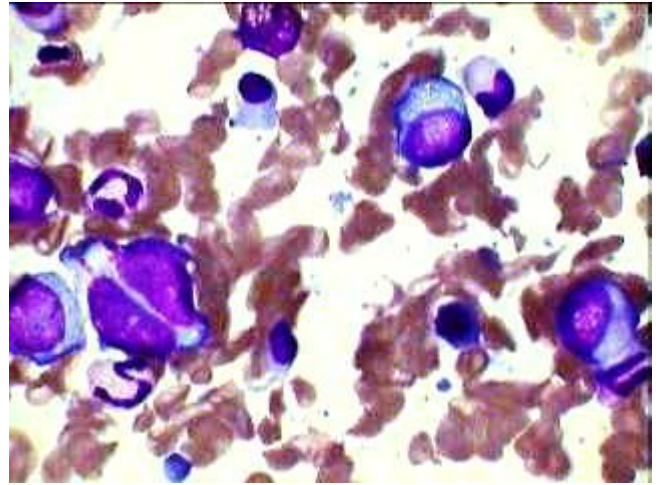


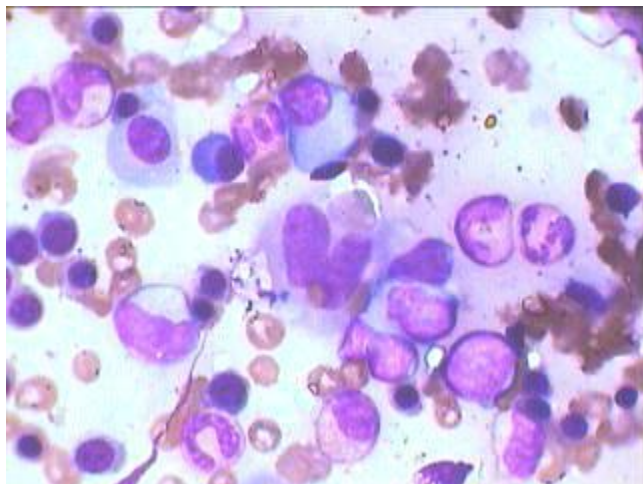
**Hodgkin's Infiltration as seen in BM aspiration smear**



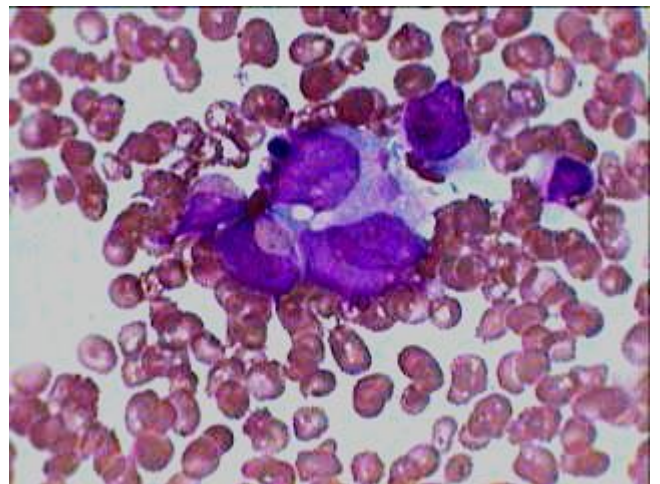
Pleomorphic picture (HP view) of Hodgkins Lymphoma infiltrating the marrow



One RS cell at the left and three plasma cells as seen under Oil Imm in the BM aspiration smear.



Most likely a variant of RS cell in the center with plasma cells and other haemopoietic cells of the same case.



One well spread Reed Sternberg cell as seen in the BM aspiration smear