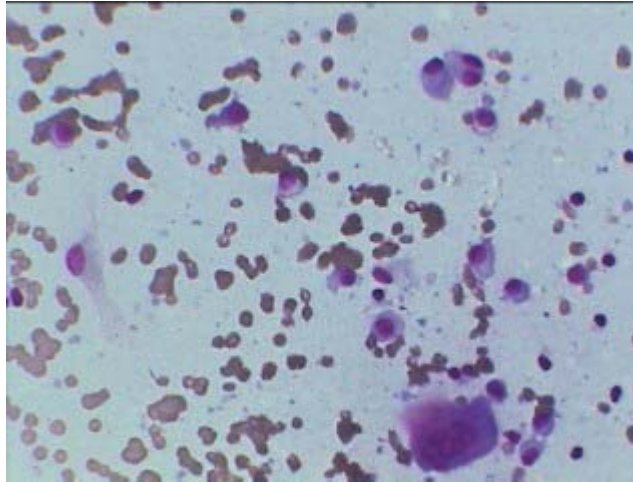
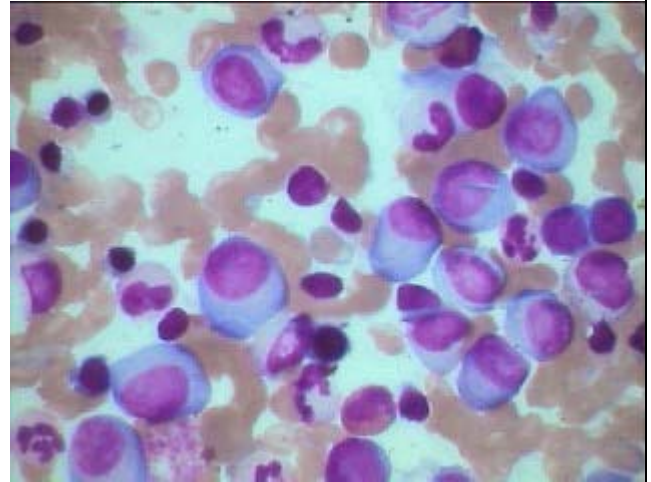


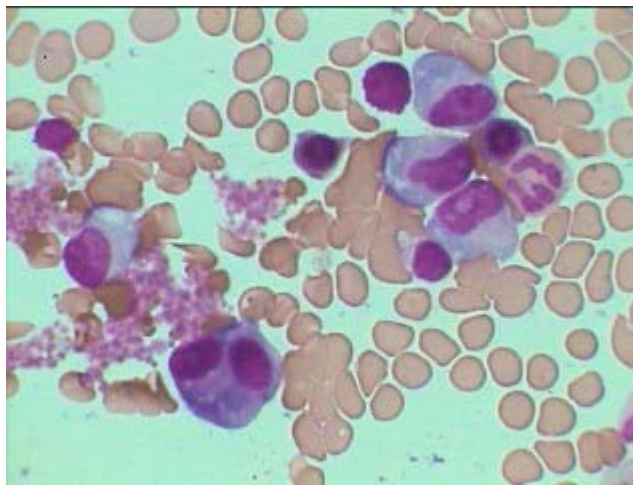
Plasma cell Myeloma –BM Aspiration smears



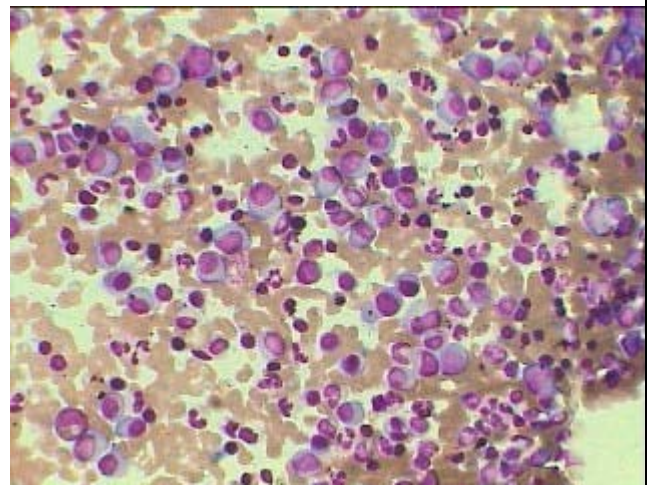
Hypocellular marrow (Scanty or almost dry BM where possibility of missing diagnosis exist) showing very few atypical plasma cells and one megakaryocyte under HP-Giemsa stain



Hyperplastic marrow aspiration showing Plasma cell myeloma (typical morphology) where no possibility of missing diagnosis.



Pleomorphic/neoplastic plasma cells (Oil Imm view) in hypocellular marrow along with almost normal thrombopoiesis.



HP view of hyperplastic marrow showing Plasma cell myeloma associated with almost normal granulopoiesis and depressed erythropoiesis and thrombopoiesis