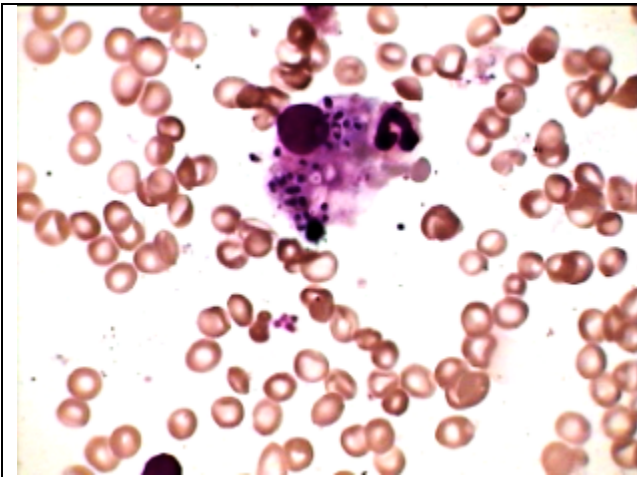
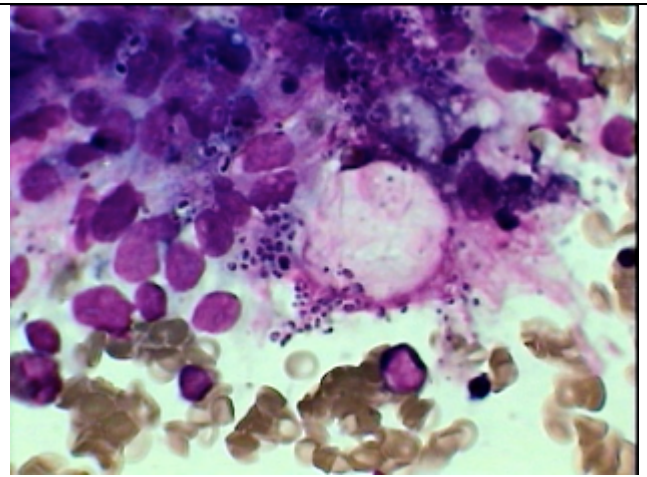




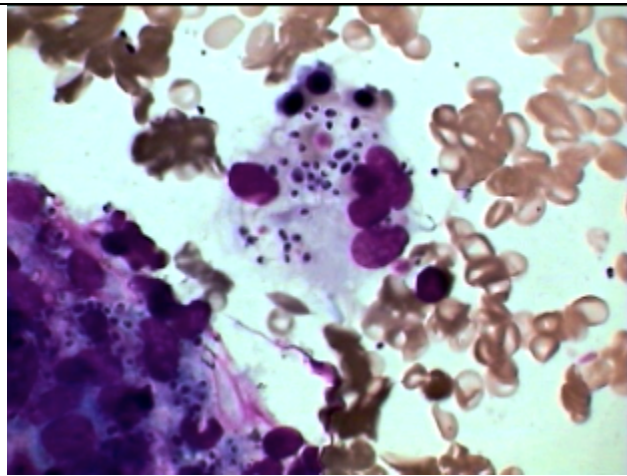
Histoplasma in the BMarrow of a Cancer patient on chemotherapy



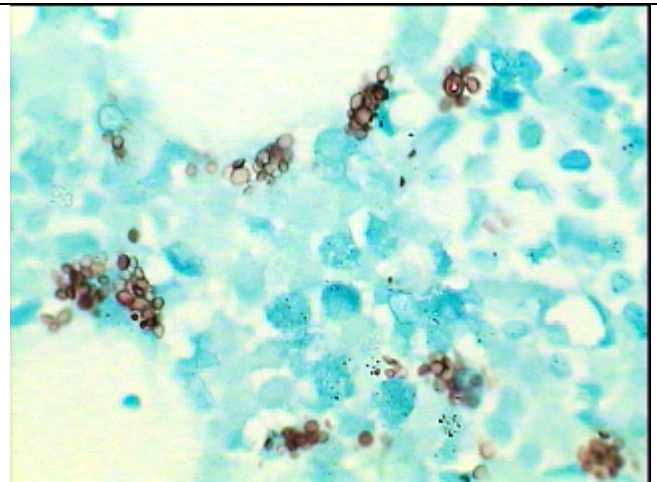
Collection of Histoplasma bodies in a Histiocytes from BM aspiration smear of a patient receiving Chemotherapy.



Large no of typical Histoplasma around and in the cytoplasmic extension of macrophage (same patient as on left).



Another view of same BM showing Histoplasma in a histiocyte of the B marrow.



Histoplasma Capsulatum bodies as seen by MNS stain where the capsule is stained bluish black in green back ground

This patient of 54 yrs referred for BM examination to find any evidence of secondries but we could find histoplasma invasion after prolonged chemotherapy for primary tumor.