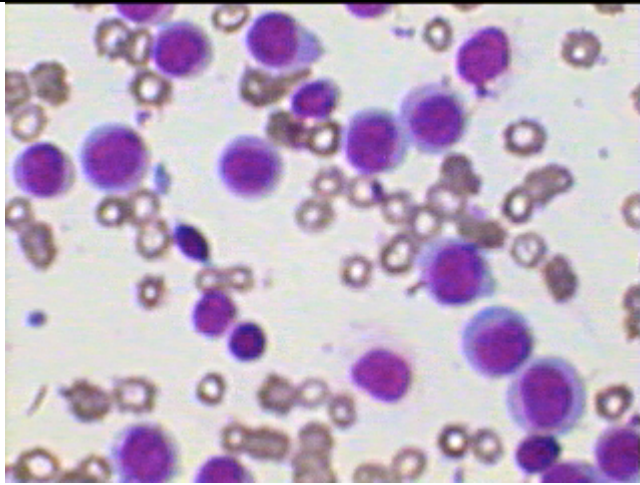
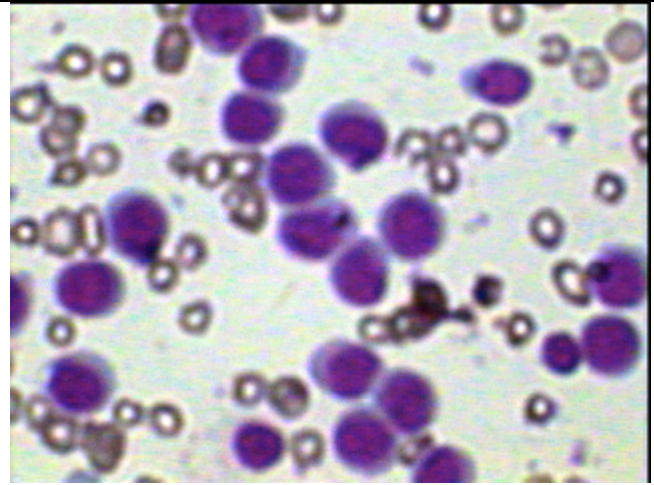




### Acute Monoblastic Leukemia (M5 A)



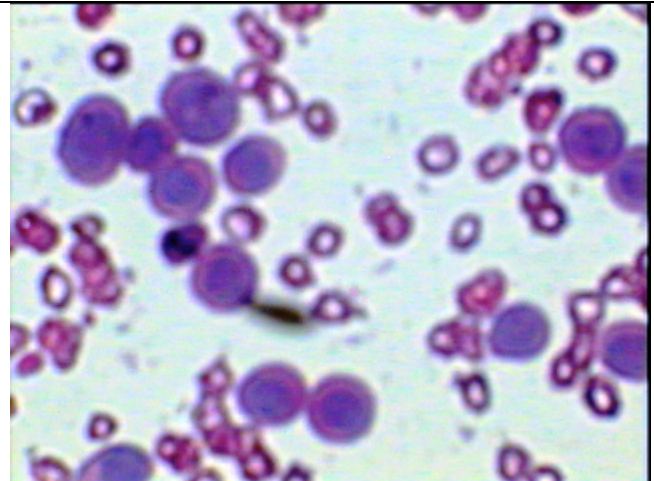
Immature mononuclear cells as seen under Oil Imm. in a BM asp.smear, also showing thrombocytopenia



Large mononuclear cells having large nucleus with indistinct nucleoli and variable amount of basophilic cytoplasm in AML –M-5.



Same smear MPO stained counter stained with Saffranin showing only one Myelocyte being positive while all other Monoblasts are negative.



Ac.Monoblastis leukemia PAS stain showing all the cells negative for Dot PAS stain but having faintly diffuse positivity in the cytoplasm.

Unfortunately our NSE stain did not give satisfactory results perhaps due to altered pH of the buffer used for this stain.