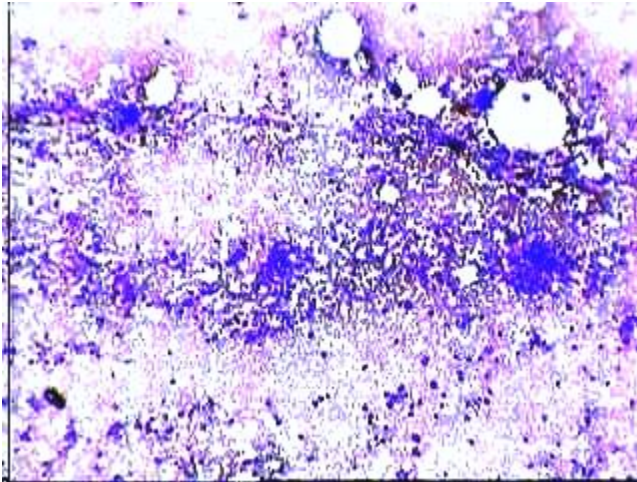
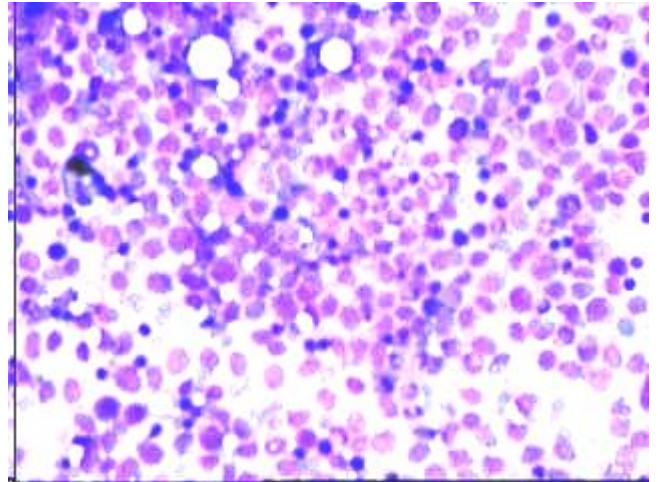


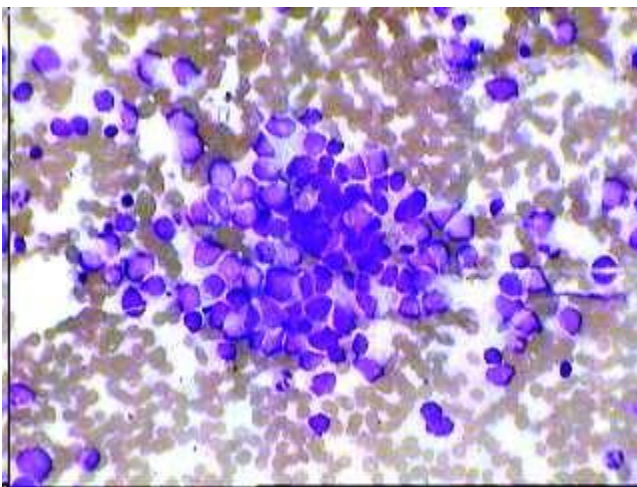
Secondaries (Mats) In BM asp smear simulating Acute Leukemia



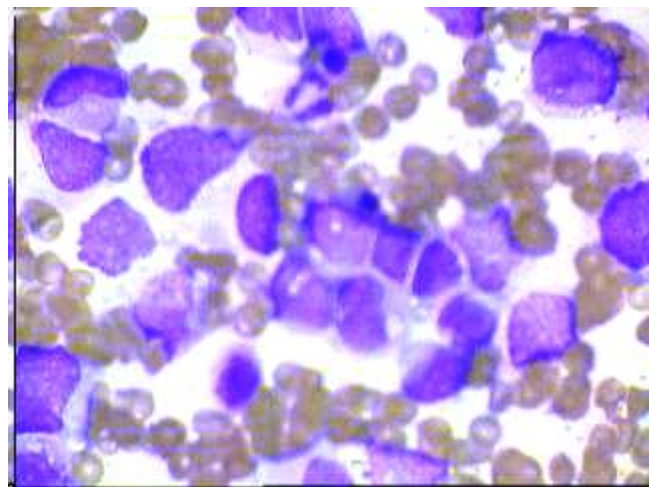
Low Power view of BM showing three focal distribution (Secondaries-?) along with intervening haemtopoesis and other normal marrow element.



High power view of the intervening cellular element as shown on the left, appear as picture of acute leukemia.



One of the foci or group of closely packed cells appear to be Non-haemopoetic cells infiltration in the marrow as Secondaries (Mats).



Oil Immersion view of the closely packed cells as shown on the left, confirm these to be extra haemopoetic cells infiltrating the marrow.

Search for the primary site of this malignancy was found to be Ewing Sarcoma