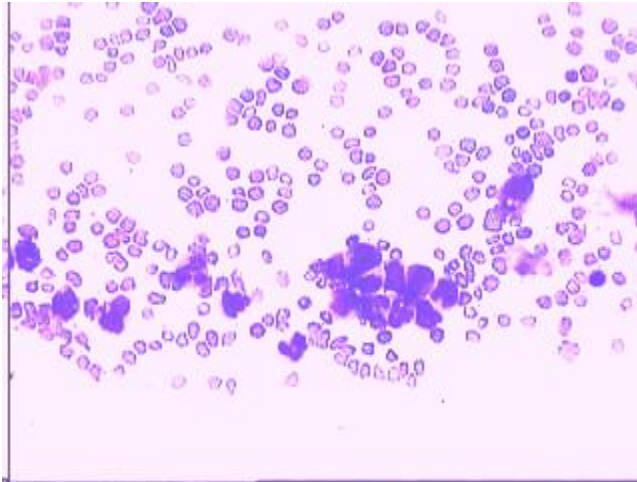
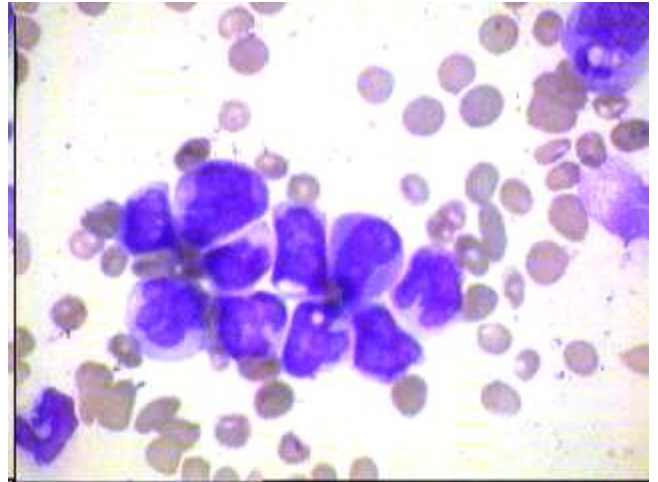


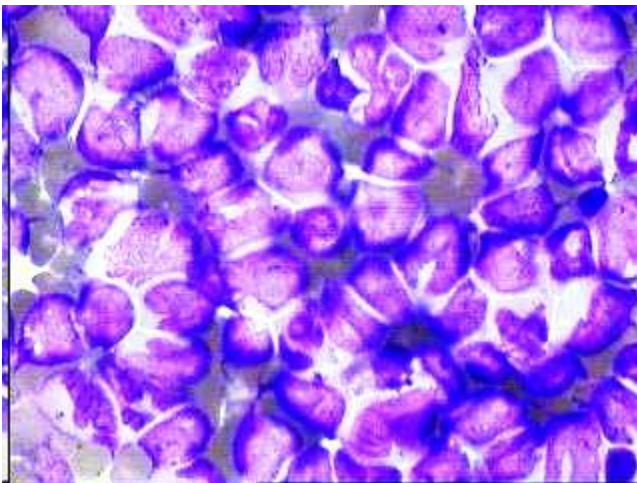
Highly Atypical APML with multilobulated nuclei



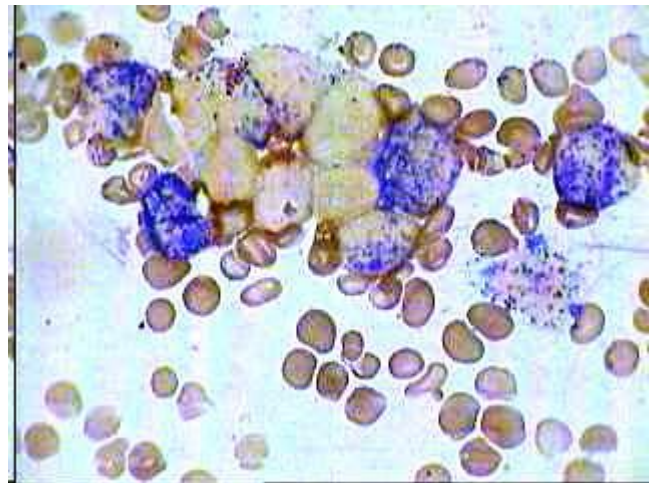
HP View of Strip of atypical leucoblasts in Peripheral blood with absence of platelets and microcytic hypochromic red cells.



Oil Immersion view of the PB smear showing multilobulated nuclei in many cells and faint granular appearance of the cytoplasm--morphologically resembling promyelocytes.



BM smear of the same packed with highly atypical leucoblasts with lobulation of nuclei and nongranular cytoplasm .Auer rods not seen.



MPO stain of the same showing intense peroxidase positivity in all the atypical cells (Promyelocytes).