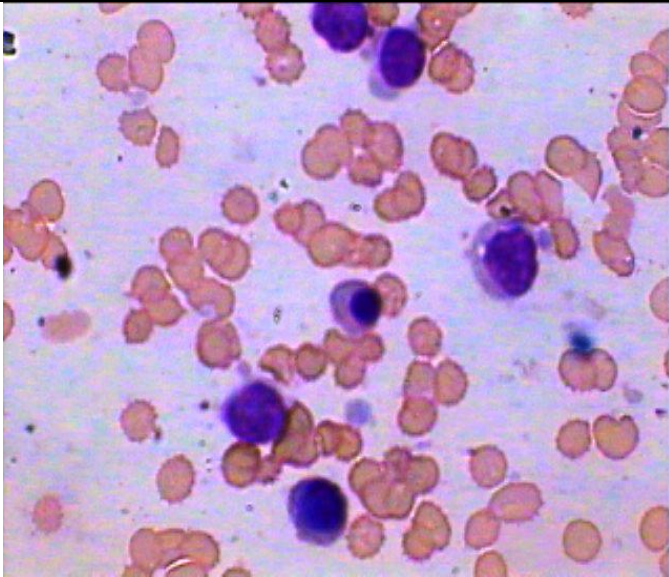


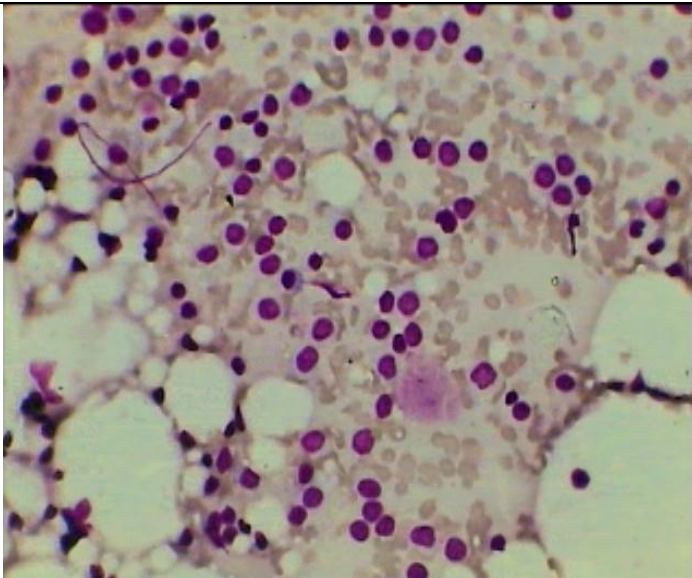
Hairy Cell, Leukemia in BM aspiration and Biopsy Imprint.



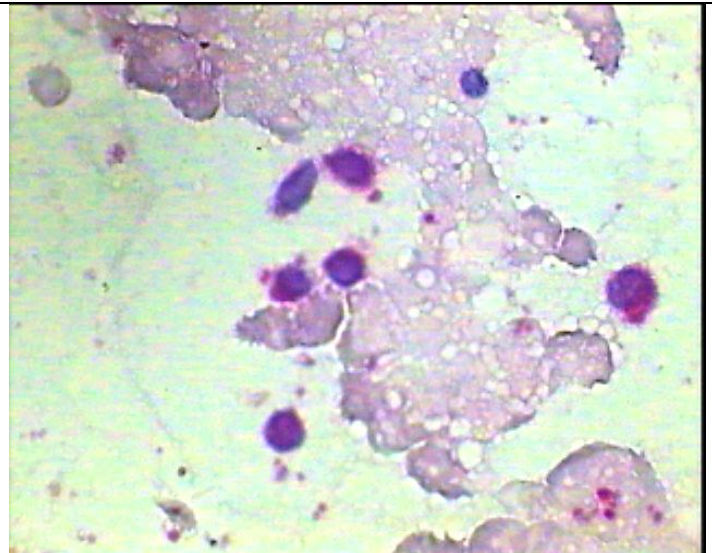
Scanty cellularity in BM Asp smear showing Hairy cells-Leishman stain under Oil Imm.



Few hairy cells showing hairy like cytoplasmic processes BM Asp Smear. Giemsa stain under Oil Immersion



BM Biopsy Imprint smear showing relatively large lymphoid cells in good numbers with lot of fatty spaces in hypocellular marrow



PAS stain of the Hairy cells showing diffuse positivity in the cytoplasmic processes