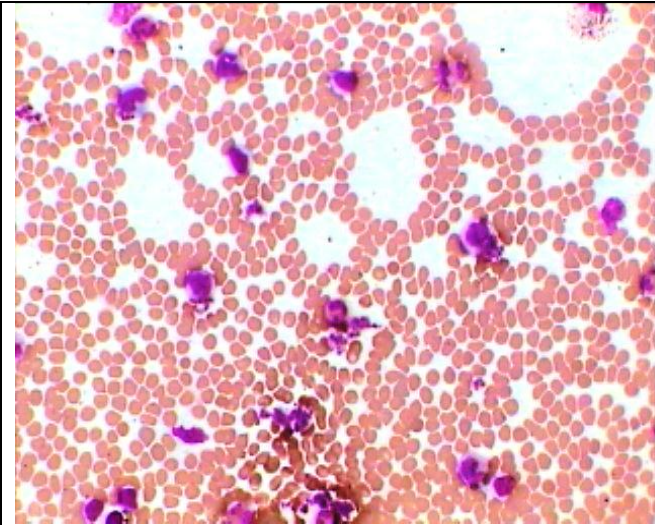


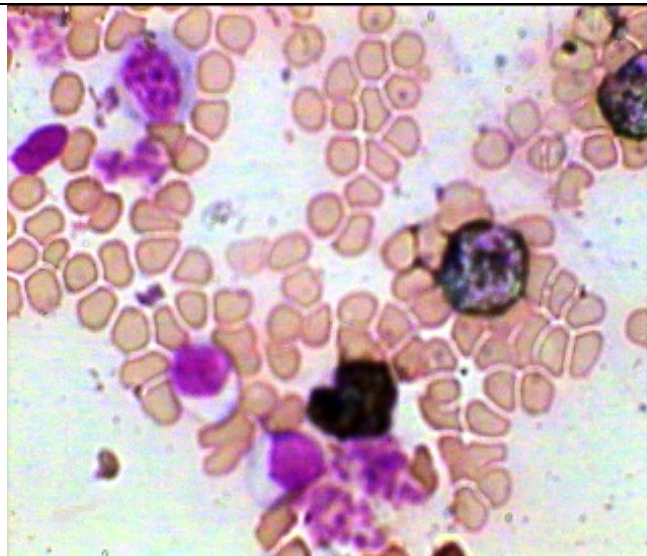
## Infectious Mononuclosis as seen in PB Smear



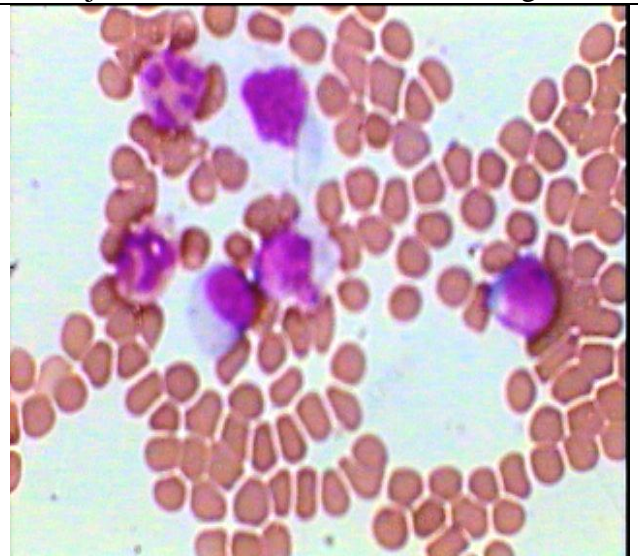
Atypical Lymphoid cells in PB Smear under HP showing irregular out line.



Same smear in Oil Imm-- IM cells showing irregular cytoplasmic border adjusted against the adjacent red cells,- a classical finding



MPO stain showing all three large mono-nuclears negative for peroxidase while myeloid cells are positive.



Large mononuclear cells with large varable basophilic cytoplasm and absent nucleoli.