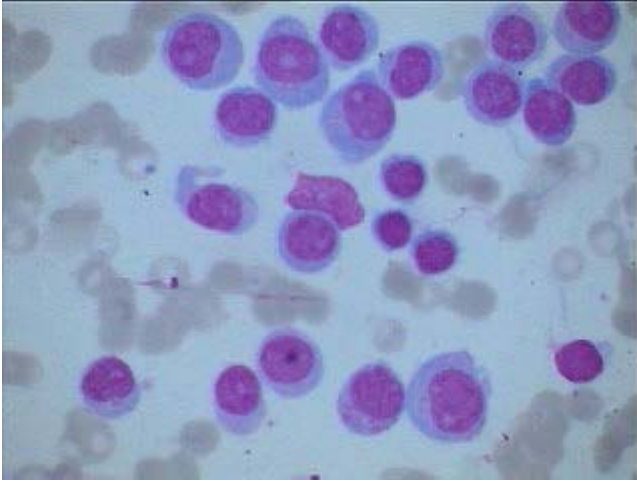
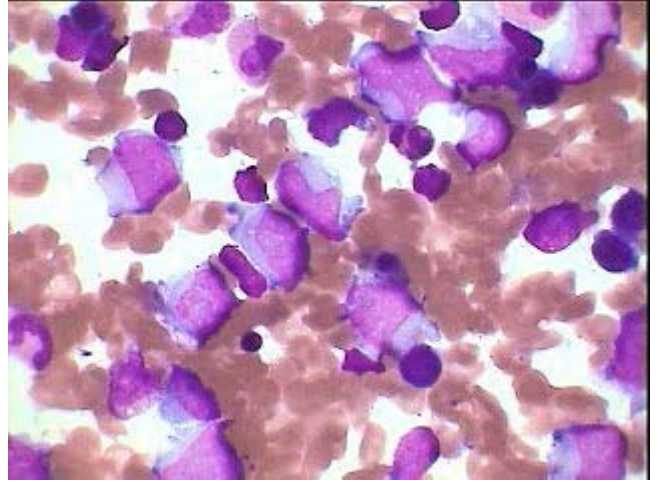


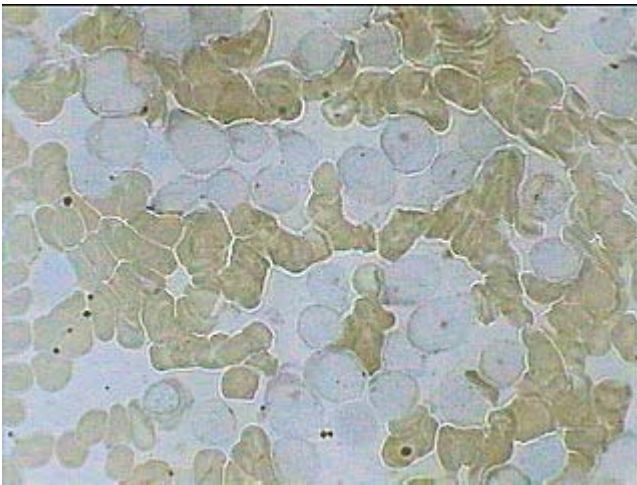
Acute Monoblastic Leukemia (AML-Type M-5)



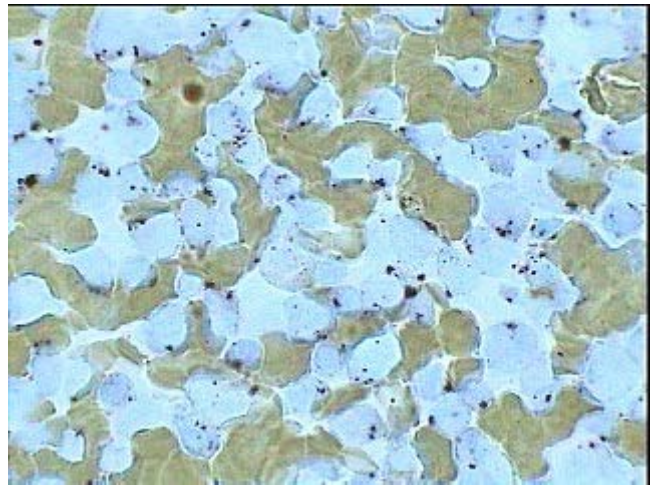
Ac.Leukemia-type M-5a, all Monoblastic cells with distinct single nucleoli & fine lacy nuclear chromatin. Giemsa stain under oil. Compare with typical M-5b on the right.



Ac.Leukemia type M-5b- Nuclei with moncytoid configuration and relatively voluminous basophilic cytoplasm. Giemsa stain under Oil.



NSE stain inhibited by fluoride and so appear negative in Monoblastic cells of M-5b.



Ac.Leukemia M-5 showing coarse/fine granular activity of Non-specific Esterase- NSE positivity

