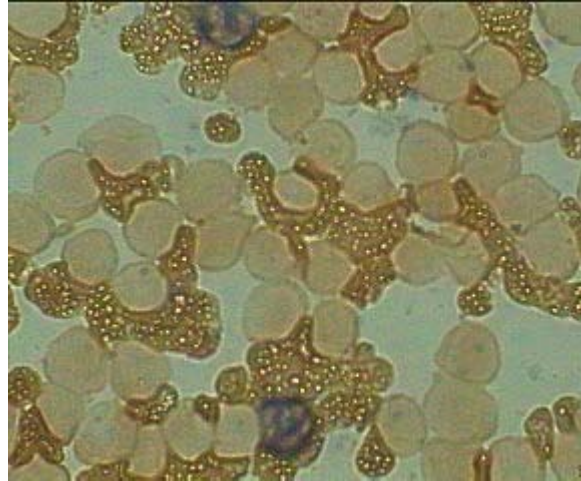


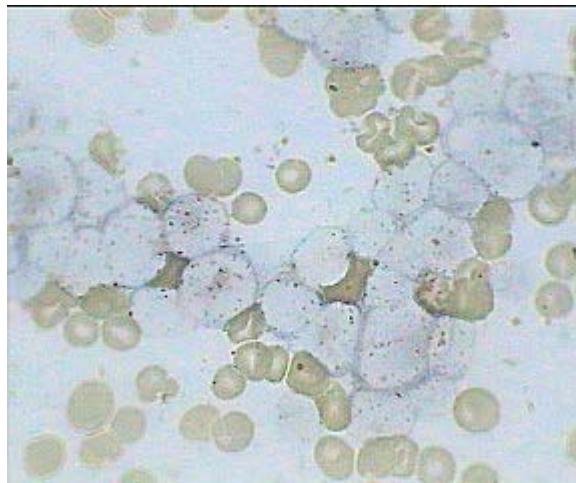
Acute Monoblastic Leukemia (AML- Type-M-5 a)



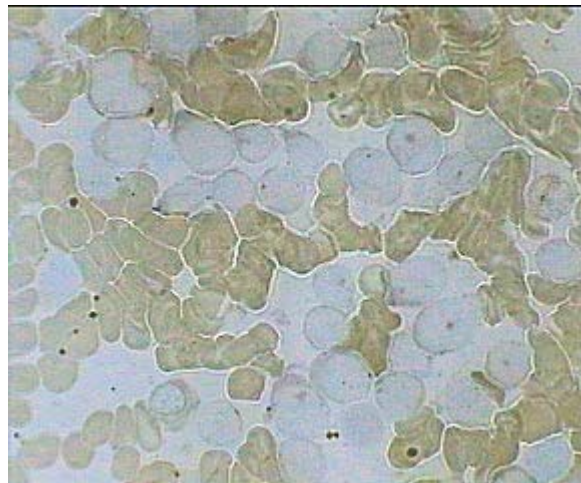
Typical Monoblasts with light basophilic cytoplasm and distinct single nucleoli.



AML-type M-5 with MPO stain showing all blast being negative except two more mature myeloid cells (Top & bottom) being peroxidase positive.



All the monoblast cells are Non Specific Esterases (NSE) Positive revealed as fine dark granules.



Monoblasts show NSE Stain inhibited by Sodium Fluoride and so, dark granules seen in the image on the left have not taken up stain here.

