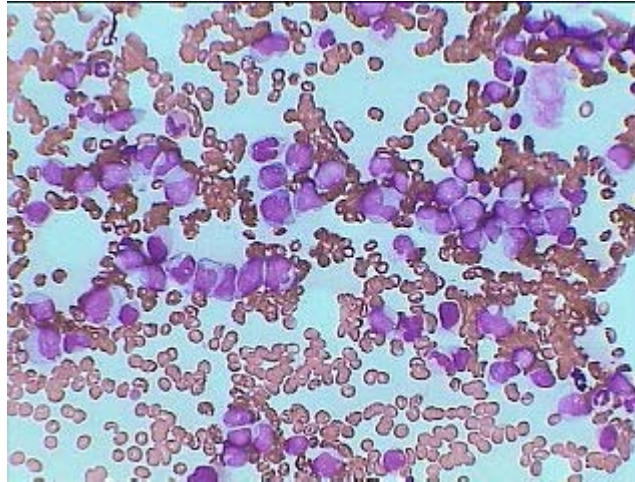
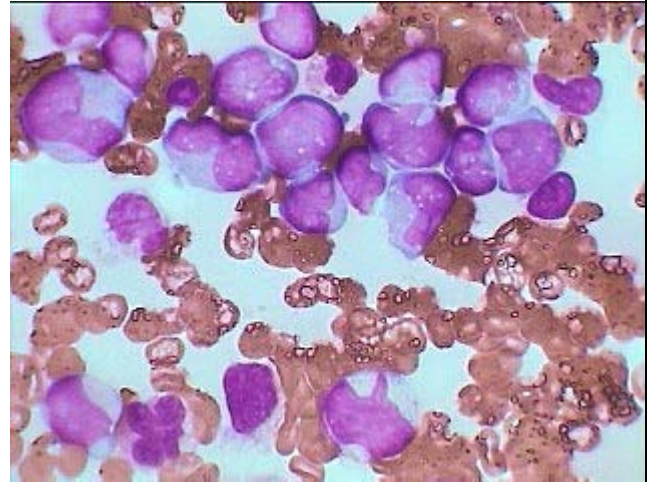


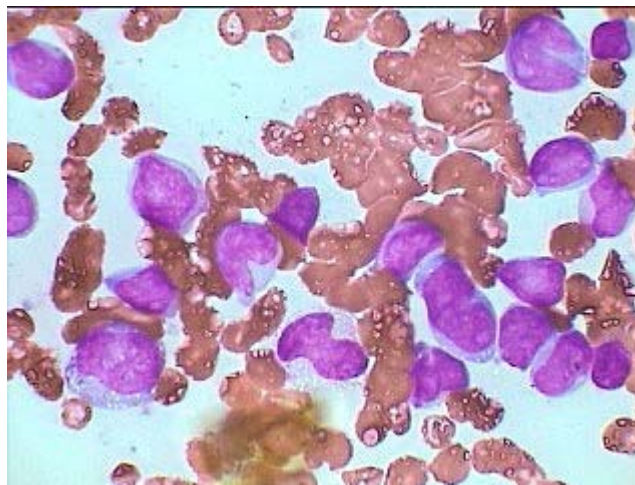
Acute MyeloMonocytic leukemia (AML-type M-4)



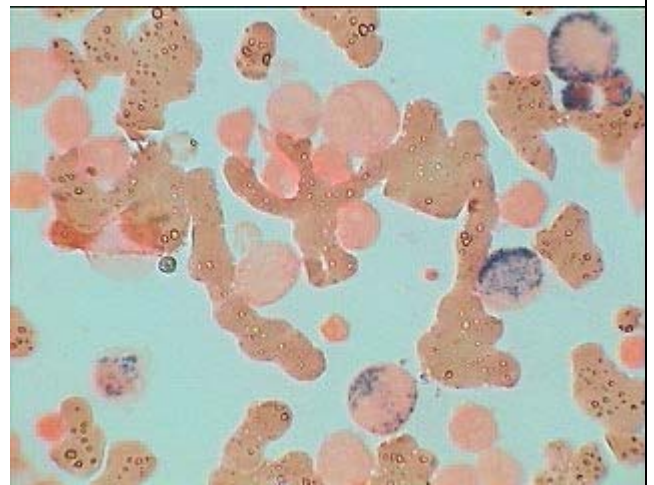
HP view of BM showing mixed population of myeloid and monocytoid blast cells.



Oil Immersion view of Giemsa stained BM showing area predominantly focused on monocytoid blast & few myeloid blast in M-4. This image may be confused with M-5b.



Oil Immersion view of giemsa stained BM showing both myeloblasts and monocytoid blasts almost in equal numbers.



Peroxidase positive Myeloblast in BM of AMMOL while Monocytoid blasts are negative for peroxidase