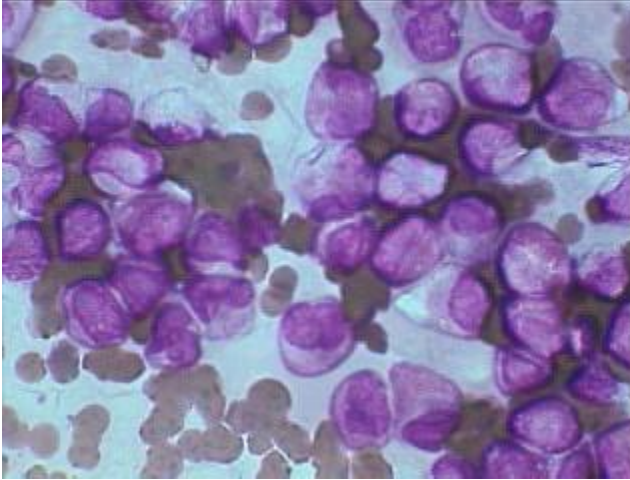
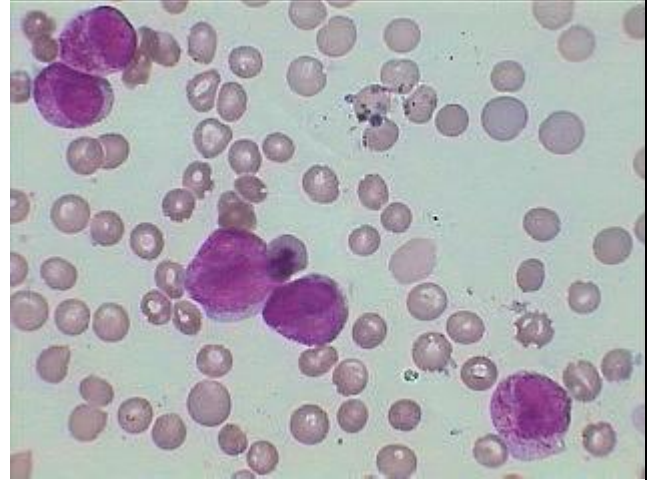


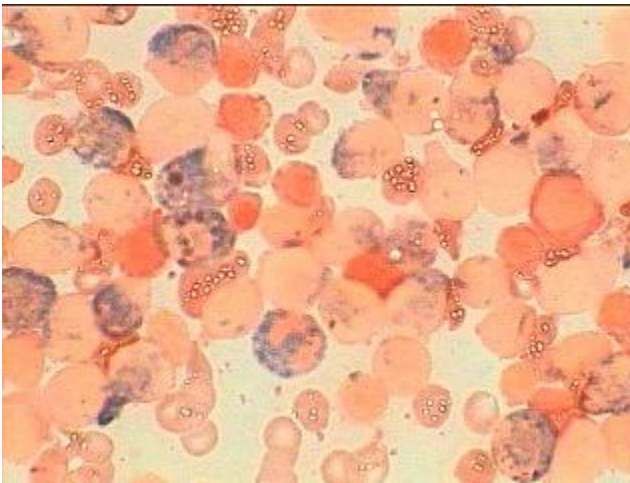
**Acute Promyelocytic Leukemia- (AML type –M-3)**



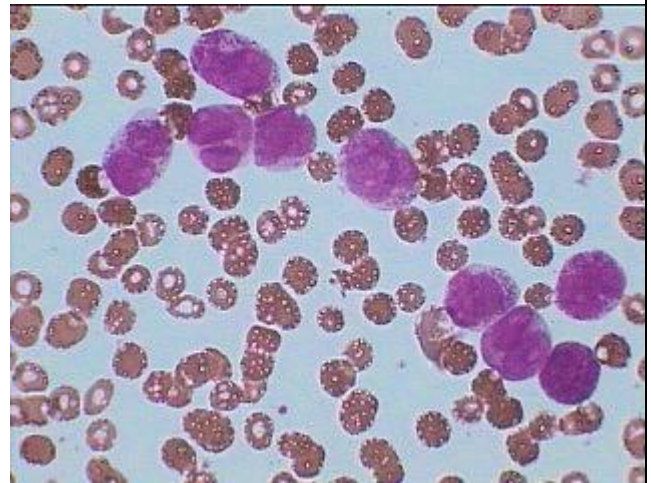
APML (M-3) showing almost all promyelocytes **hypogranular** with Auer rod in the central cell



Fagot's cell at the top left and the bottom right in APML Giemsa stain under Oil.



Same picture as above with MPO stain counter stain by saffranin-showing Peroxidase positive Promyelocytes in APML.



Highly anaplastic and **hypergranular** promyelocytes in APML. May Grunwald Giemsa stain-under Oil.