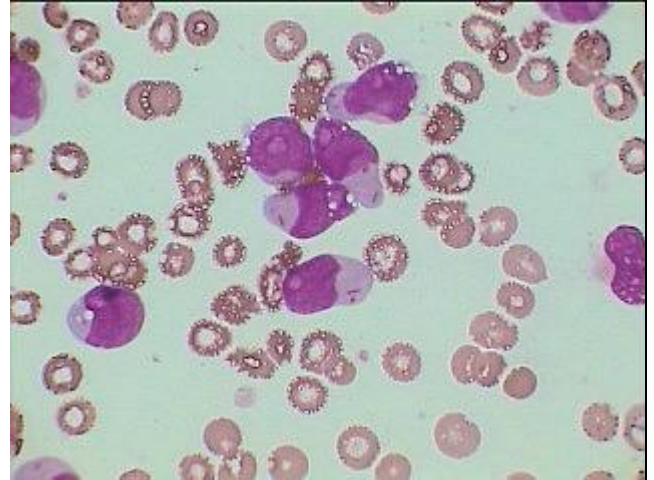


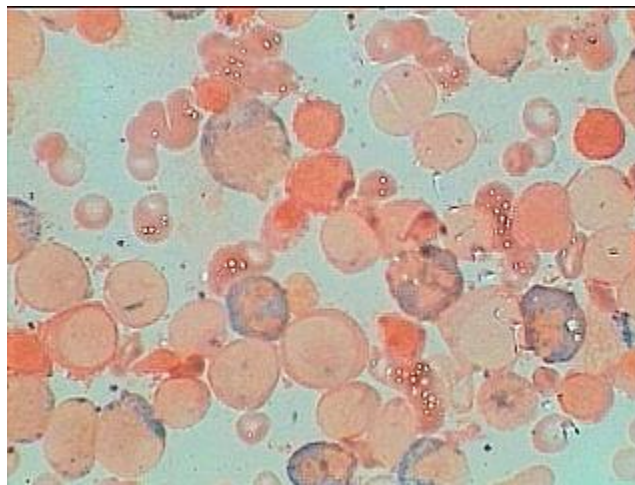
Acute Myeloid Leukemia with maturation AML-type M-2



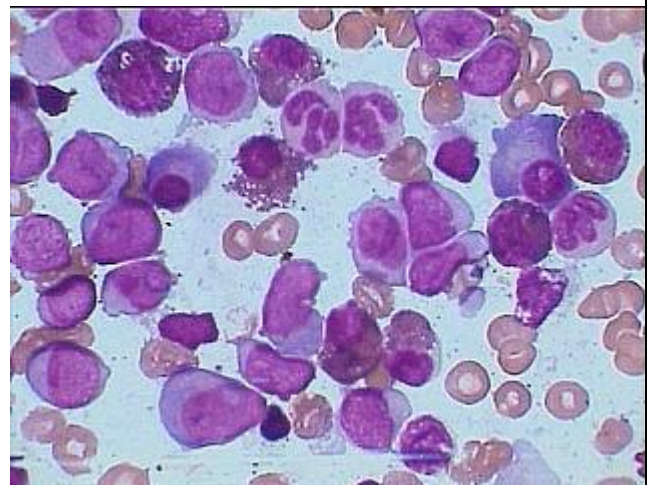
AML_M-2 with predominantly typical neoplastic Myeloblasts. One at the top showing Auer rod. Occasional Promyelo & Myelocyte are present.



This focus shows only Neoplastic Myeloblasts and three of these at the center showing Auer rod in each



Out of 13 blasts about 4 are peroxidase positive besides 6 more mature myeloid cells also positive Stained for MPO counter stain by saffranin.



AML with maturation showing about 14 blasts, 4- promyelos, 2-myelocytes and 2 neutrophils & one eosinophil..