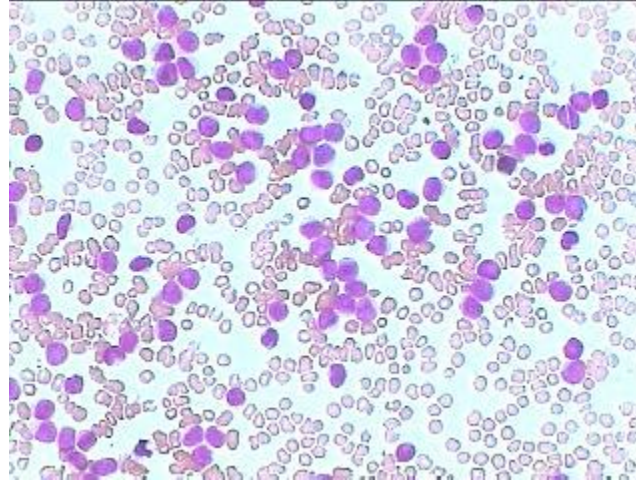
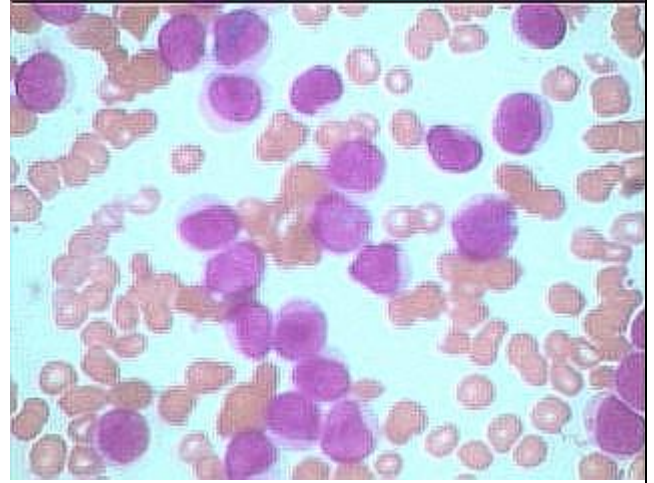


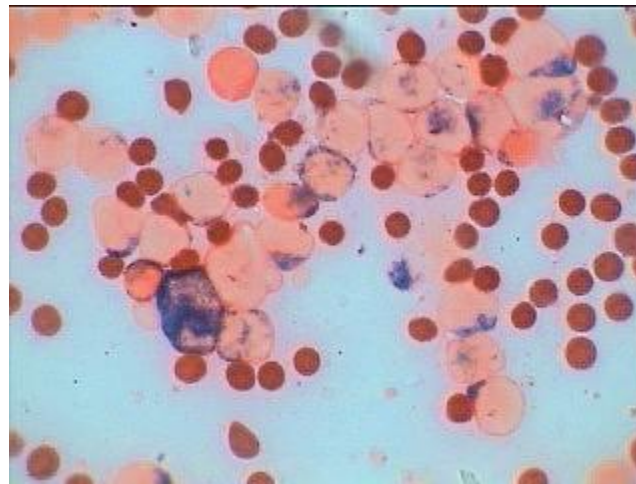
## Acute Myeloid Leukemia-type M-1



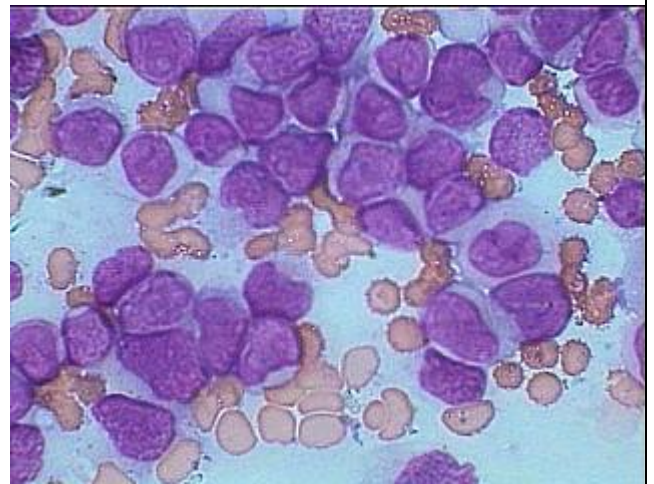
AML-Type-M-1, Giemsa stain under HP can be confused with ALL- see under oil in the next image.



Acute Myeloid leukemia without maturation- Giemsa stain under oil.



AML-M-1 Myeloperoxidase positivity (Blue-granules) counter-stain by safranin. One Pro-myelocyte and 16 blasts are positive.



Pleomorphic leukoblasts (without maturation) having relatively large nongranular cytoplasm in most cells .