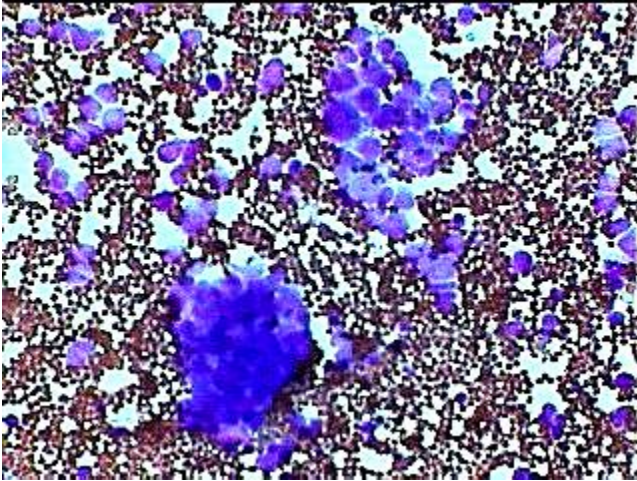
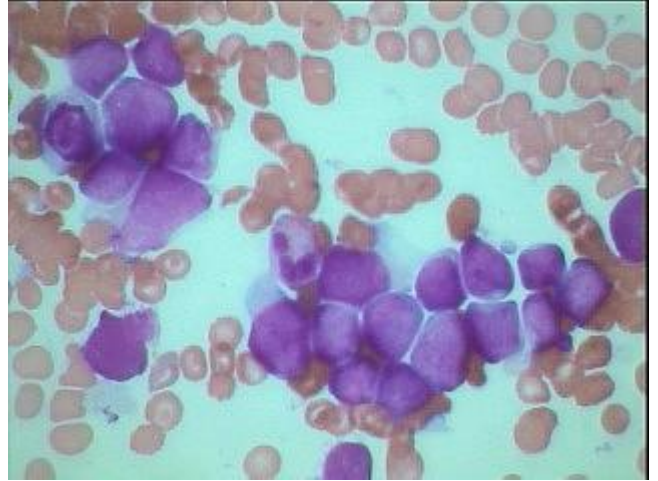




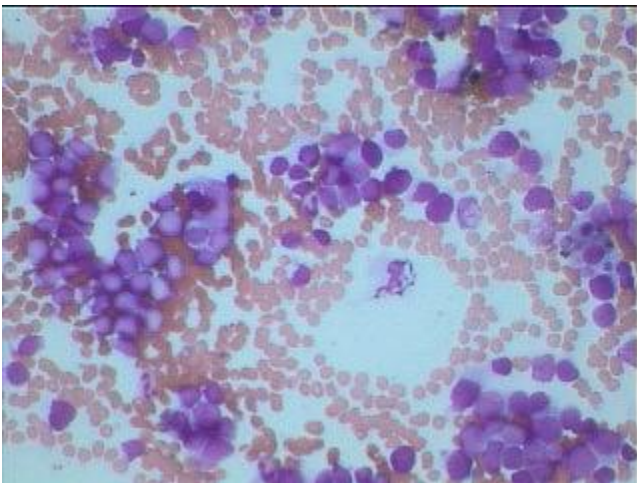
Lymphoma spill-over in the Marrow



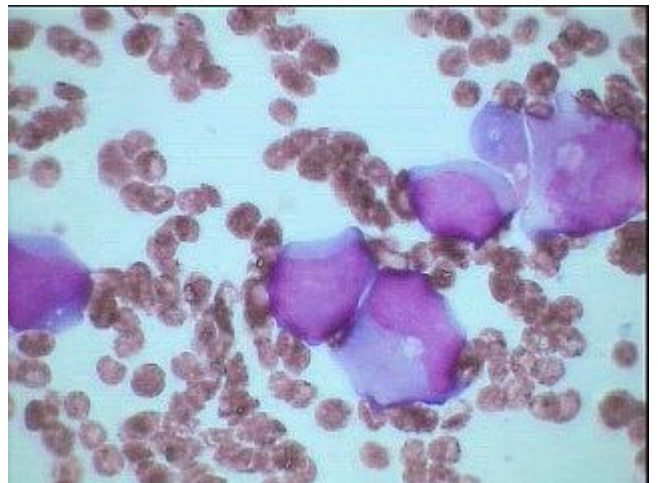
Lymphoma spill over in BM – LP- View- showing two distinct focal infiltration.



Lymphoma (NHL) infiltration (Focal collection of Neoplastic Lymphoid cells) in the marrow- Giemsa stain- Oil Immersion.



Lymphoma spill over in BM –HP – Giemsa stain showing many focal infiltration.



Highly Malignant Lymphoma (NHL) cells infiltration in the marrow (Oil)