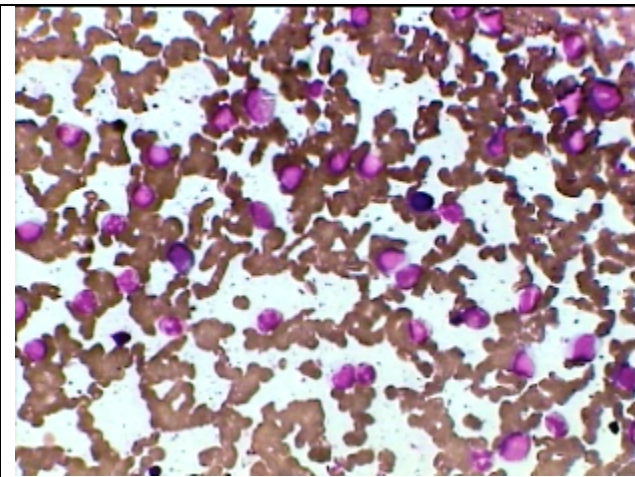
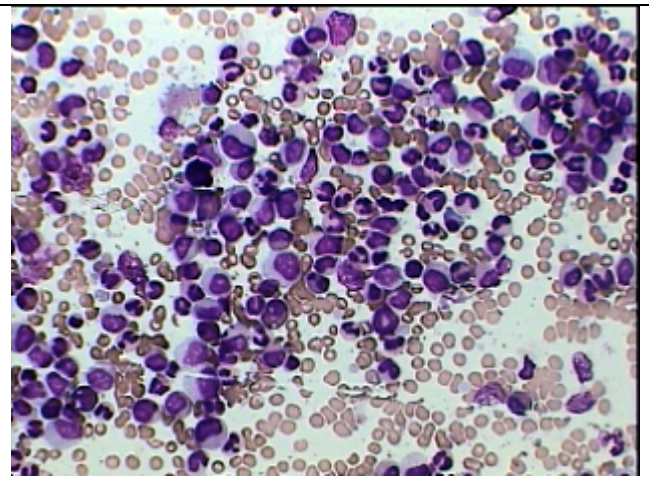




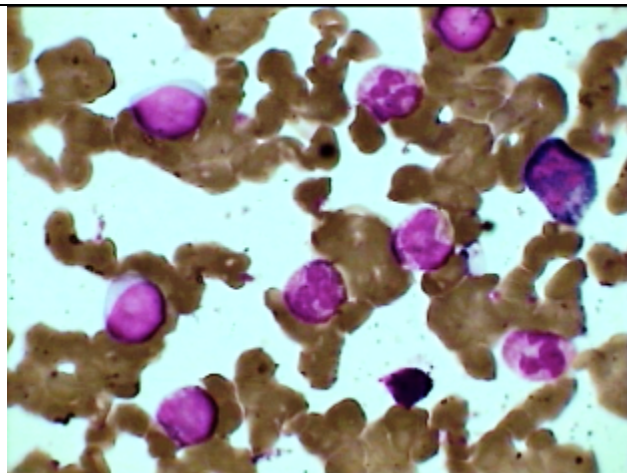
**CML in Accelerated Phase in BM Aspiration smear**



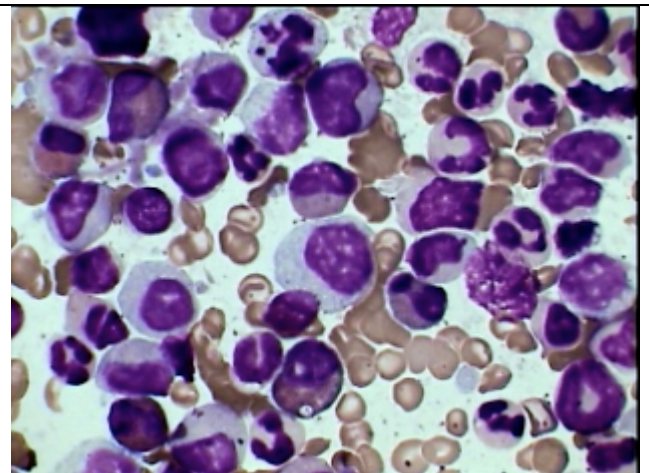
HP view of BM aspiration smear of CML showing good number of Blast cells and thrombocytosis.



Another smear of the same as on left with increased blast cells in case of CML



One hypocellular area of the same smear under Oil Imm. Showing 3 myeloid blast with 5 more mature myeloid cells and one erythroblast.



Another hypercellular field of the same case as on the left showing accelerated phase (CML) with more than 10% blasts and magalloplatelets