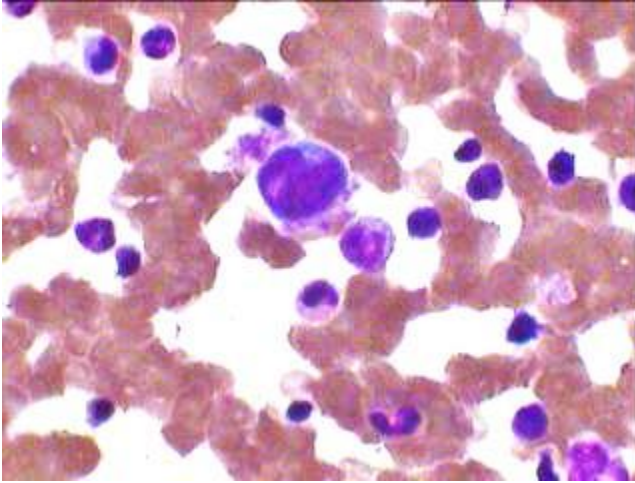
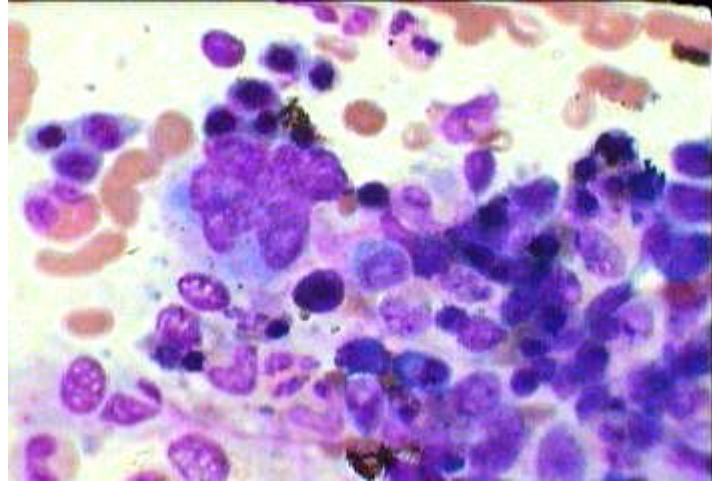


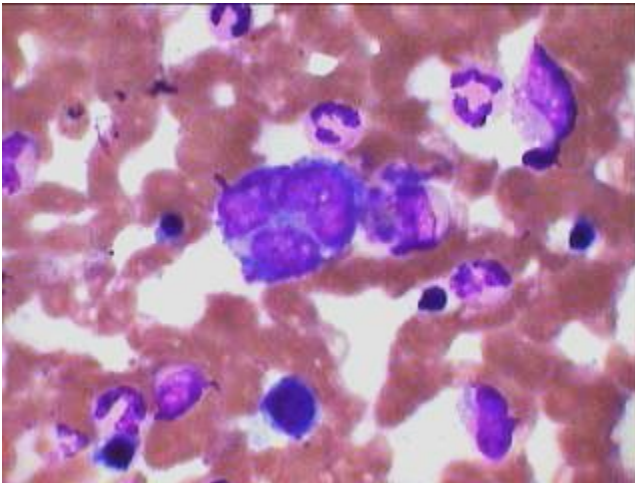
**BM Aspiration smears in Hodgkins Lymphoma spill over**



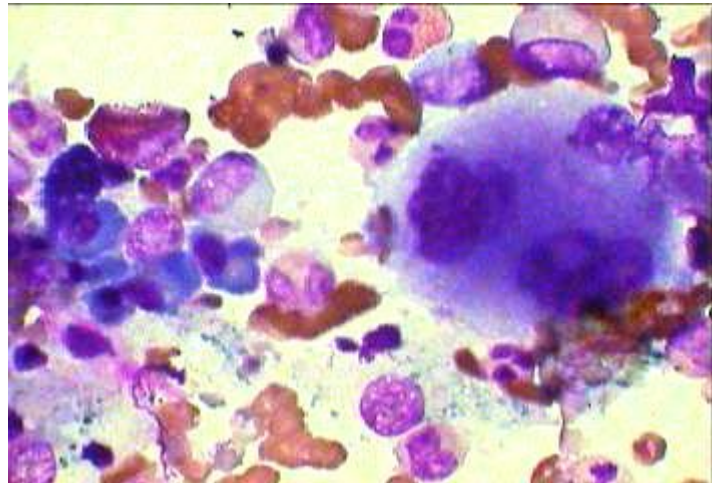
Mononuclear cell Resembling R S cell in Hodgkins Lymphoma infiltrating BM. Also depicting Red cell Autoagglutination.



Variant of typical binucleate Reed Stern Berg Cell In BM aspiration smear of Hodgkins with plenty of plasma cells.



Trinucleate R S Cell in Marrow aspiration smear of Hodgkins Lymphoma –spillover.



Another variant of Binucleate R S cell with group of plasma cells at the left.

This patient was diagnosed Hodgkins Lymphoma on LN Biopsy and BM request was sent for evidence of infiltration (Staging of disease).