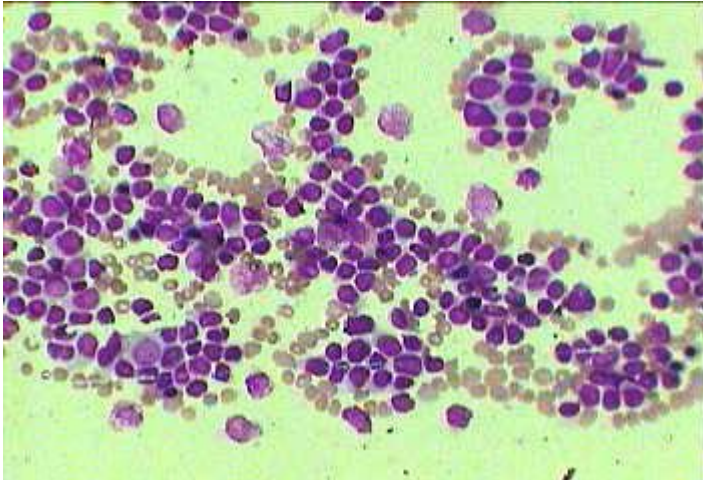
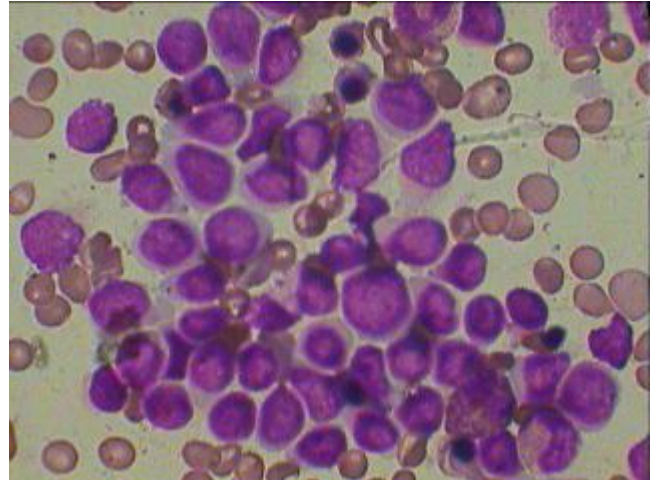


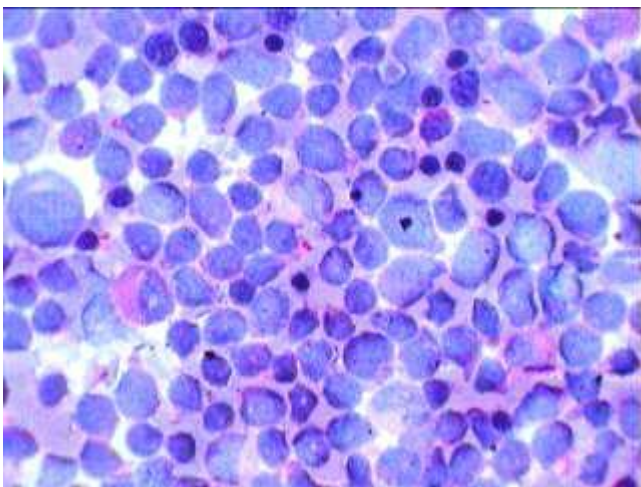
Marrow aspiration smears in Acute Mixed Cell Leukemia



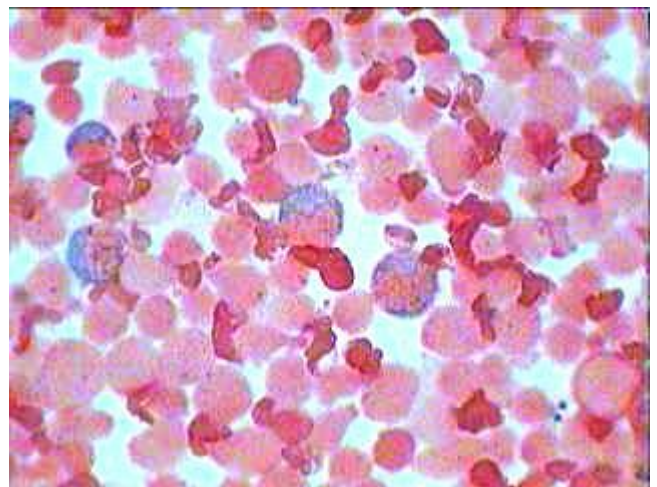
Marrow Aspiration smear showing diffuse distribution of both large and small leucoblasts intermixed – in Acute Mixed cell leukemia.



Oil immersion view of the image seen on the left showing large cells morphologically resembling-Myeloid blast and smaller cells resembling Lymphoid blasts



Some of the smaller leucoblasts showing Dot PAS positivity-(Lymphoblasts) while larger cells are negative. One promyelocyte (Left of center) showing diffuse PAS positivity as a control of PAS stain.



Same case of Acute Mixed cell Leukemia with MPO stain showing peroxidase positivity in 5 of the myeloid blasts.

Acute Mixed cell Leukemia is not that rarity, so all possible cytochemical stains should be done particularly when morphologically two different population of cells exists.