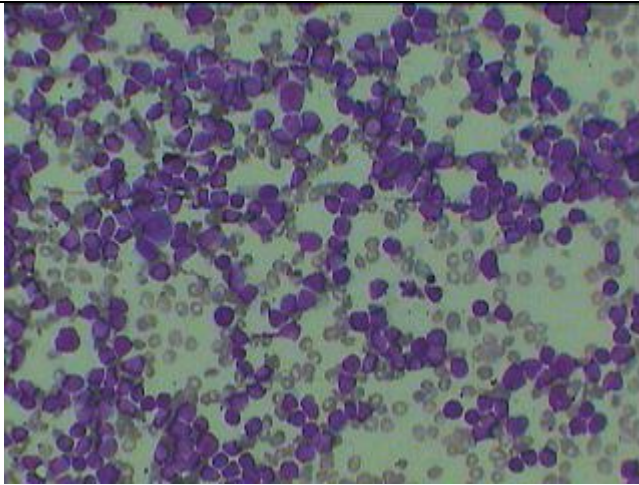
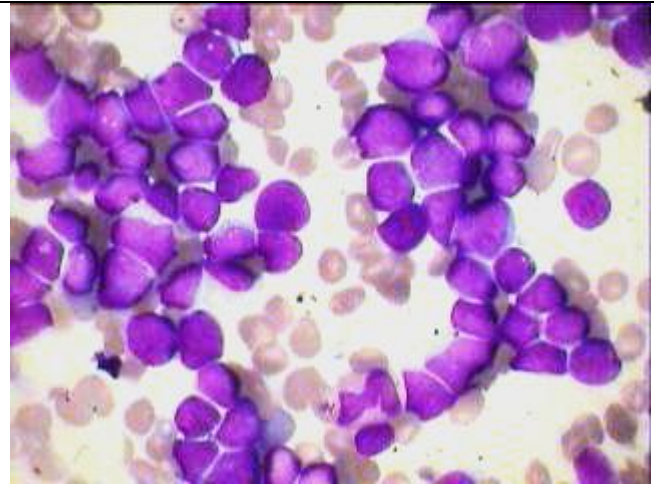


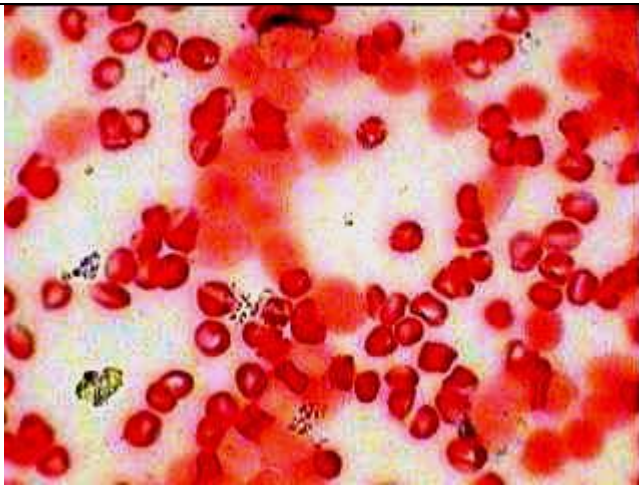
Acute leukemia most likely type Mo



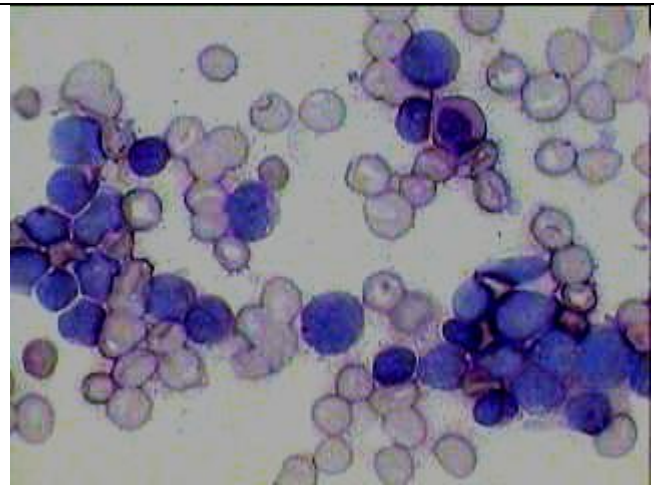
HP view of BM asp smear of Acute leukemia showing large number of leucoblasts with almost complete absence of more mature haemopoetic cells.



Oil Immersion view of the same showing leucoblasts with scanty cytoplasm and large nuclei having uniform chromatin and absent or indistinct nucleoli in most of the cells.



MPO stain of the same Ac. Leucemia with only one Blast (out of 20 blasts) showing Peroxidase positivity. Most likely type Mo



PAS stain of the same showing all the blast negative for dot pas stain while only one metamyelocyte showing diffuse PAS postivity

Morphologically it is not possible to identify Mo with certainty, though the MPO positivity must be present in less than 3% of the blast cells (as seen above). Lineage specific antigen of early myeloid cells—CD13 and CD33 would be positive.