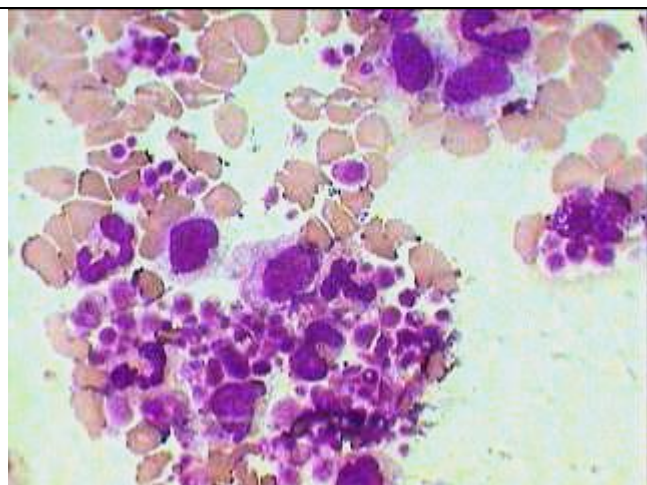
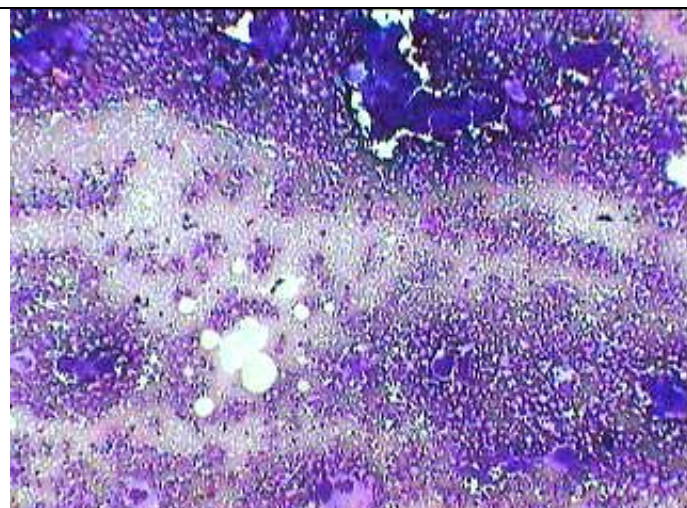


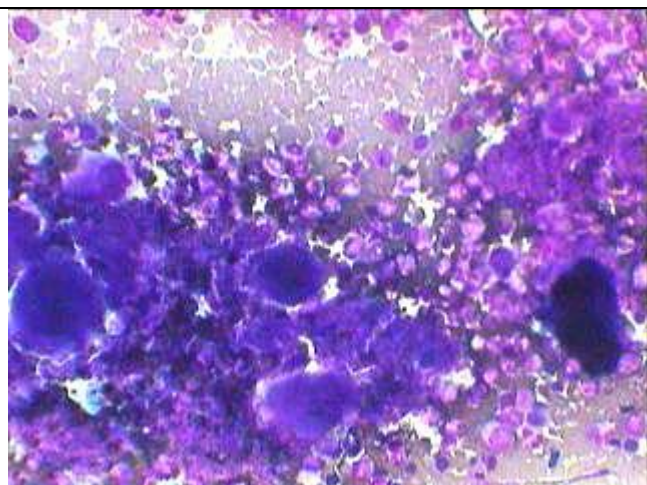
Essential Thrombocythemia in BM aspiration smear



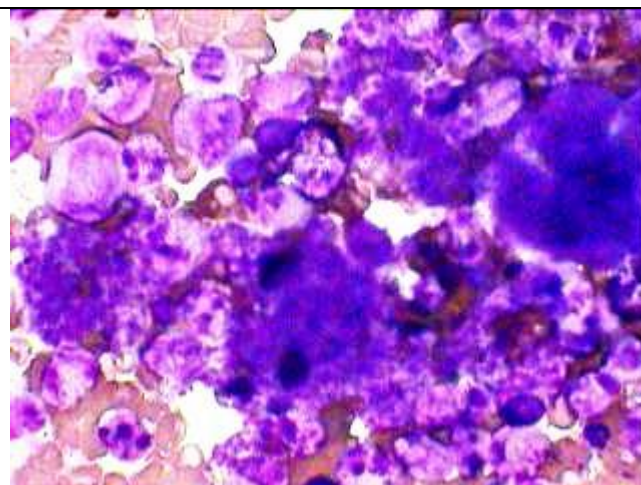
PB Smear showing collection of highly pleomorphic platelets from a case of thrombocythemia



Closely packed group of megakaryocytes at the top and another 9 other at the bottom surrounded by large number of platelets



High Power image of Essential Thrombocythemia showing group of megakaryocytes along with sheets of platelets (accelerated thrombopoiesis) and hyperplastic granulopoiesis



Oil Immersion view of the same marrow aspiration smear showing marked thrombocytosis and moderate granulocytosis from Essential thrombocythemia.

This elderly women (57 yrs) having moderate splenomegaly and Echymotic patches on the legs with leucocytosis (18000/cmm) & Thrombocytosis (7.8 lacs/cmm) showing the above pictures on BM aspiration.