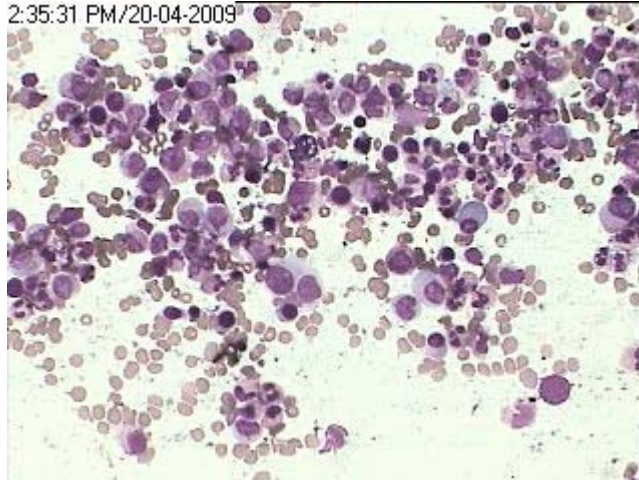
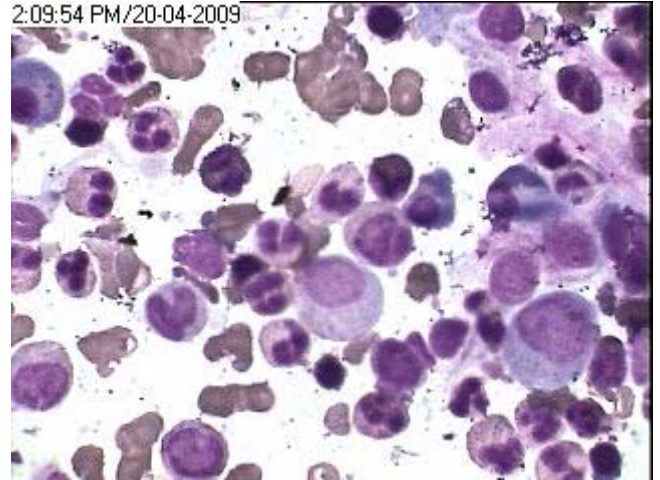


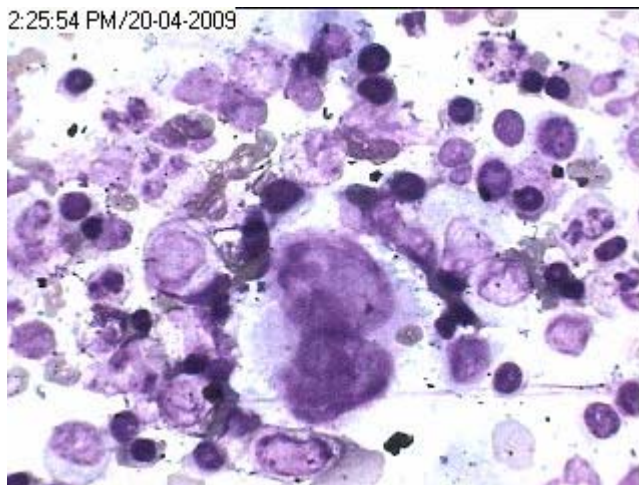
## Hodgkins Lymphoma infiltration in marrow



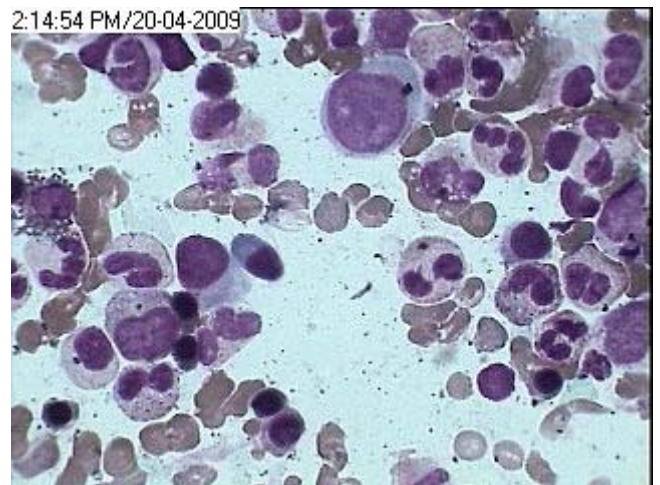
HP view of Marrow infiltration in Hodgkins Lymphoma, showing one binucleate RS cell at the center & two large mononuclear variants with plasma cells and other haemopoietic cells.



Large atypical mononuclear cell variants at the bottom left along with 3 plasma cells in a diffuse mixed cell Hodgkins Lymphoma infiltrating BM as seen in aspiration smear.



Hodgkins Lymphoma infiltrating marrow showing typical RS cell along with various erythroid and myeloid precursors and evidence of super added necrosis in aspiration smear.



Mononuclear RS cell variant at the center top along with other haemopoietic cells in lymphocyte depleted Hodgkins disease

Lymphnode biopsy of this case showed Hodgkin Lymphoma (Lymphocyte depletion type) his subsequent **Marrow aspiration images** are shown above. It is difficult to find evidence of HD in marrow aspiration smear compared to biopsy, hence depicted.