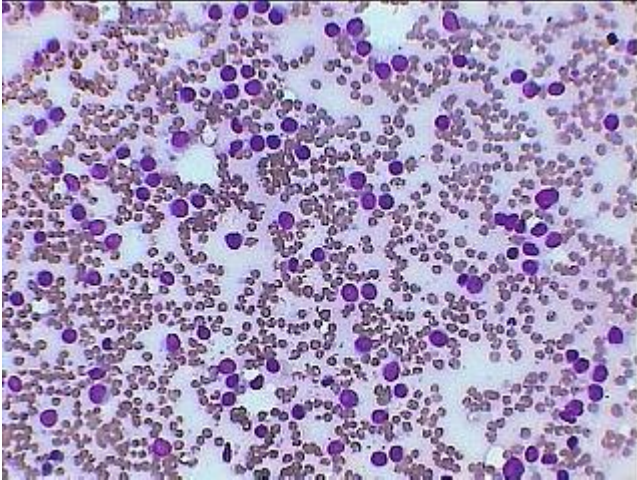
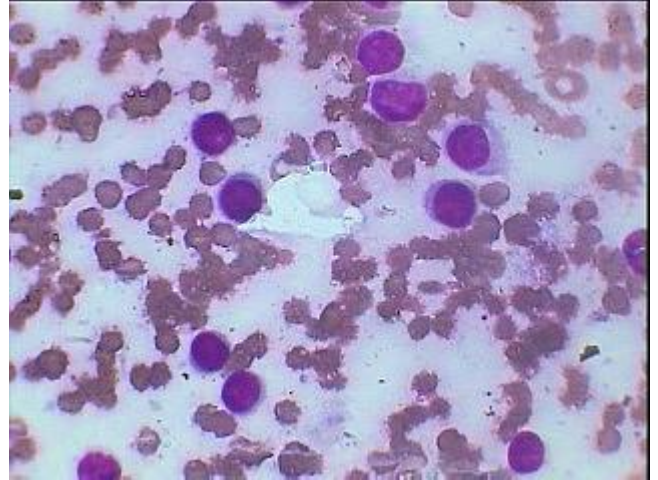




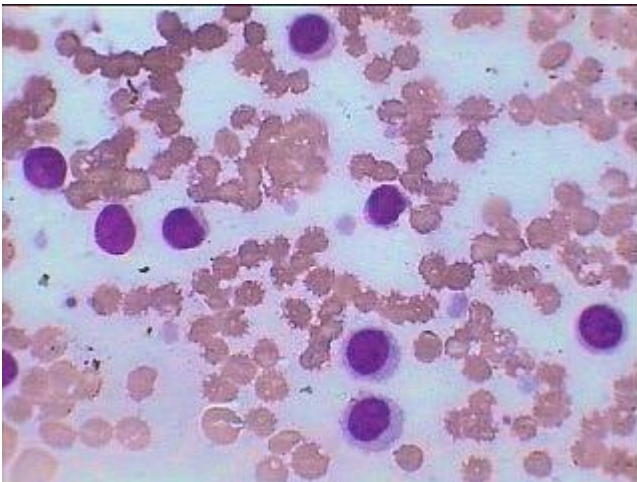
Hairy Cell Leukemia



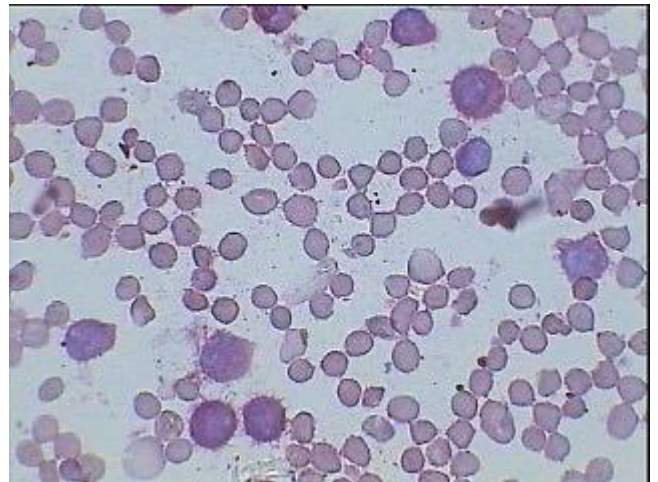
Low power view of Hairy cell leukemia in BM showing relatively scanty cellularity consisting of mature looking lymphoid cells



O.I. view of two typical Hairy cells (mid right) and others less distinct in BM of Hairy cell leukemia showing scanty cellularity



Two much more distinct Hairy cells at the bottom and others less typical hairy cells in HCL.



PAS stain showing distinct Hairy projection of two cells at the bottom and one at upper right. There is no dot PAS positivity of the lymphoid cells in HCL.