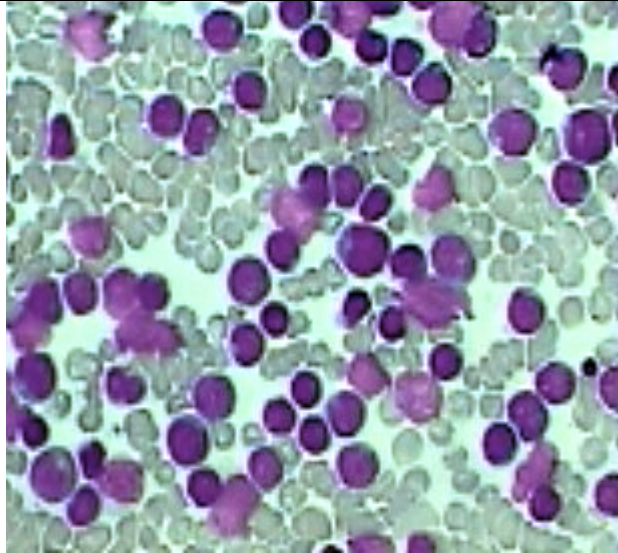
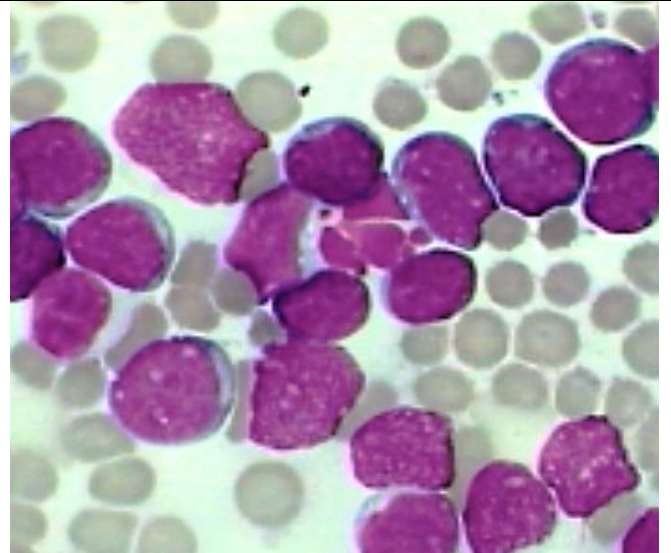


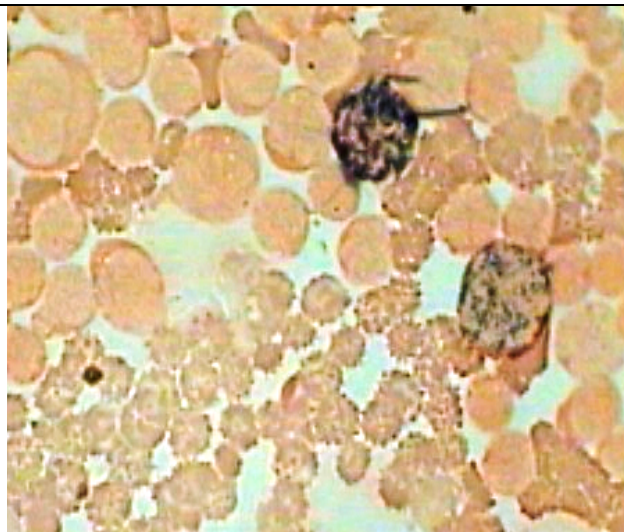
**ALL( Type L-2) in BM aspiration smear**



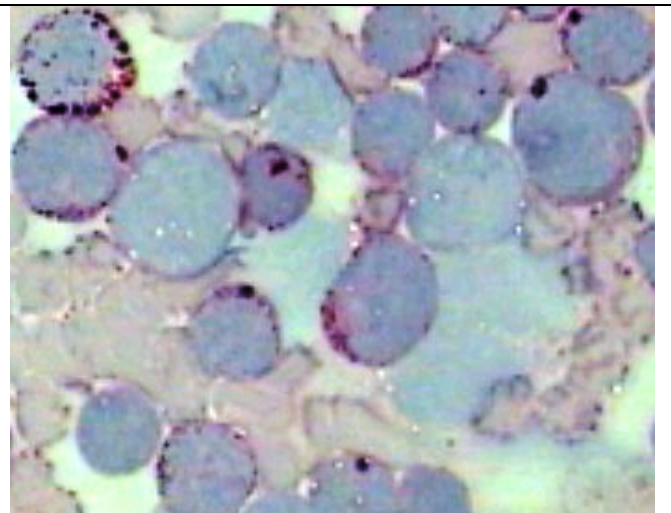
Small uniform Leucoblasts having very little cytoplasm and dense uniform nuclear chromatin –ALL under high power.



Same smear as on left under higher magnification (Oil Imm) uniform chromatin with distinct small nucleoli in some cells



MPO stain showing only two peroxidase positive more mature myeloid cells while all the Lymphoid blasts are Negative.



PAS stain of the same showing beautiful Dot PAS positive granules in the cytoplasm of many Lymphoblasts.