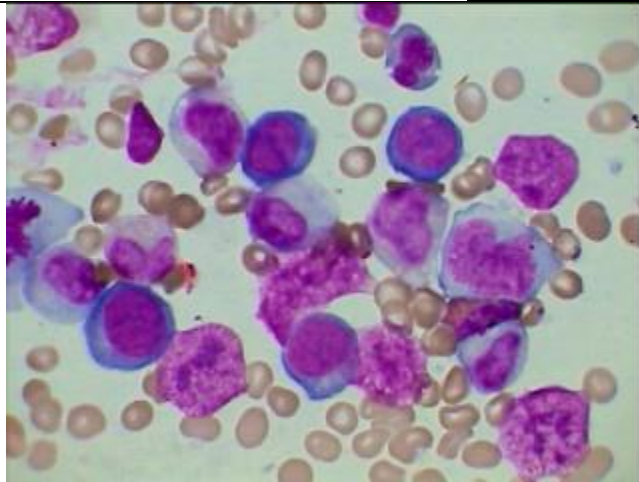
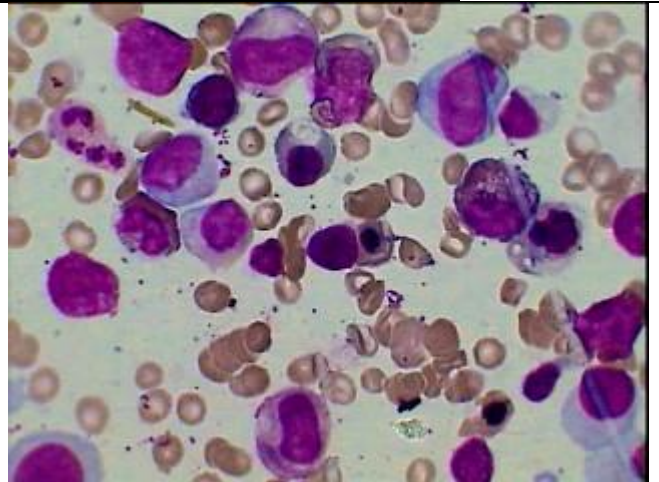


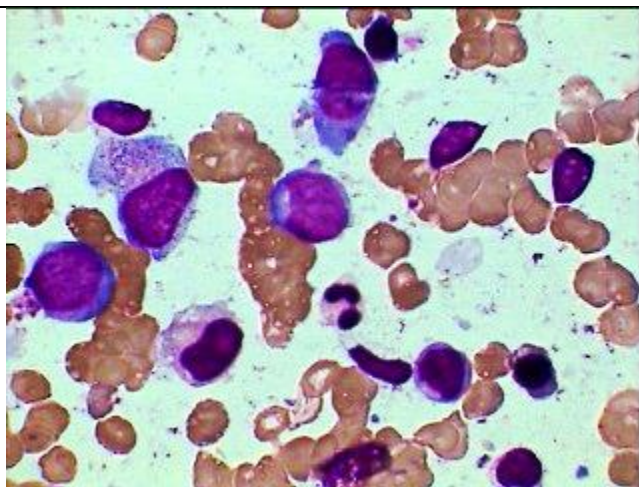
**MDS-RAEB-Converting into Ac Leukemia (M2)**



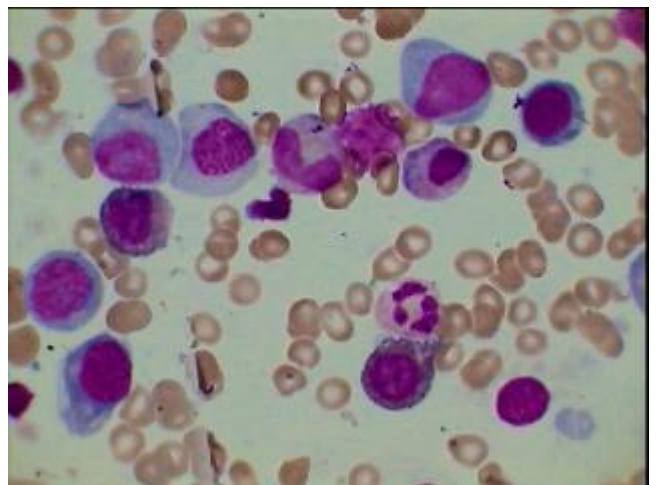
RAEB-showing 5 Erythroblasts-out of which 2 are dysplastic and 4 Myeloid blasts most of which are dysplastic.



Another field of the same case showing both myeloid and Erythroid precursors with dysplastic morphology and few more mature myeloid cells.



Same case after 5 months showing 3 Dysplastic myeloblasts with few other haemopoietic cells indicating conversion to AML



Another smear as on the left showing 5 myeloid blasts 2 more mature myeloid cells and 2 Erythroid precursors –conversion to AML-M2