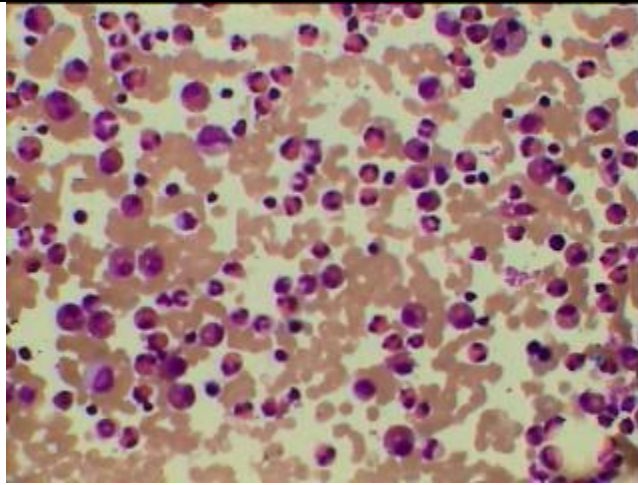
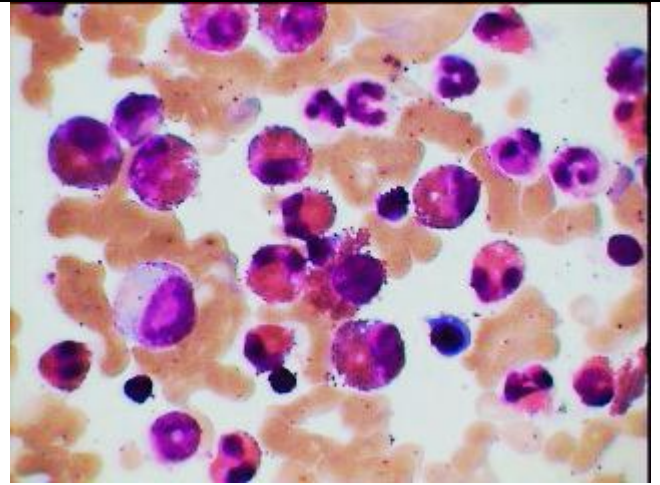


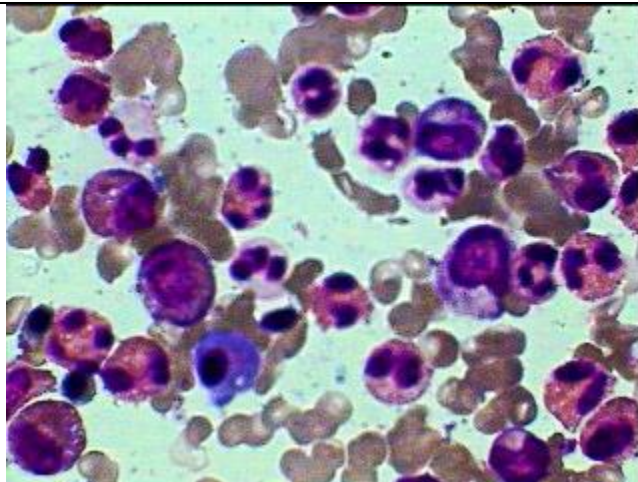
## Hyper-Eosinophilia/Chronic Eosinophilic Leukemia



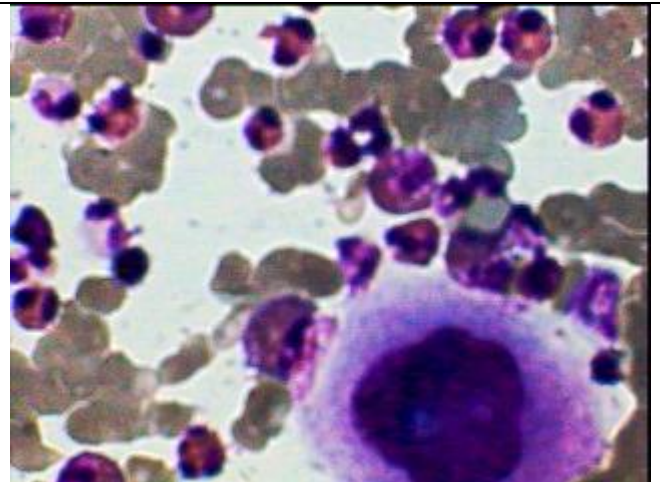
Large no. of mature eosinophils and eosinophilic metamyelocytes in BM asp smear under HP view.



Same as that of left under Oil Immersion.



Chr. Eosinophilic Leukemia showing Mature eosinophils and its precursors with 3 blasts besides one plasma cell in BM aspiration smear under Oil



Same BM smear as on the left with one megakaryocyte.

### Note

It is difficult to differentiate between hyperEosinophilia and Ch.Eosinophilic Leukemia on Blood and BM examination alone. However 1)WBC of more than 50000/cmm with presence of few eosinophilic precursors, and 2) presence of more than 5% blasts in BM, besides Clinically -3) Not responding to relevant therapy for hypereosinophilia 4) Associated Infection, Anaemia & Thrombocytopenia and 5) Tissue damage like that of myocardium and brain-with rapid progression to death in Eosinophilic Leukemia