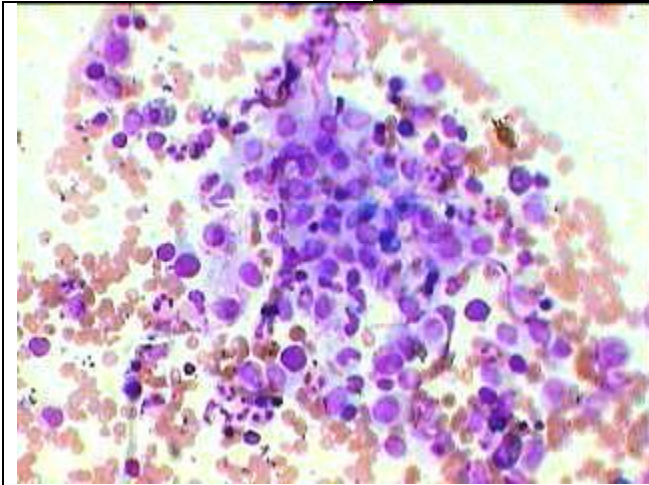
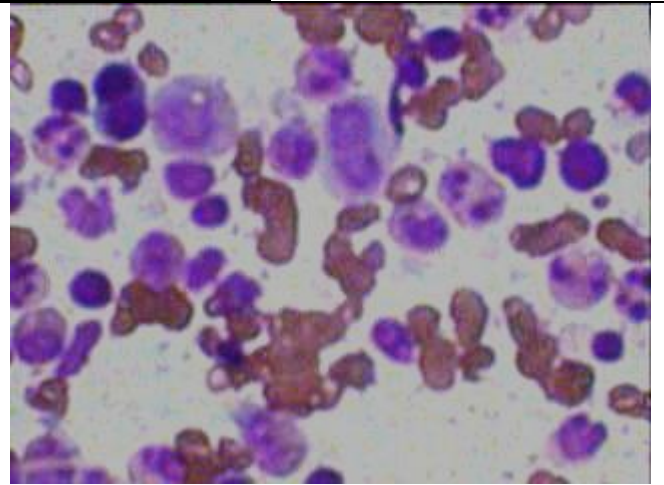


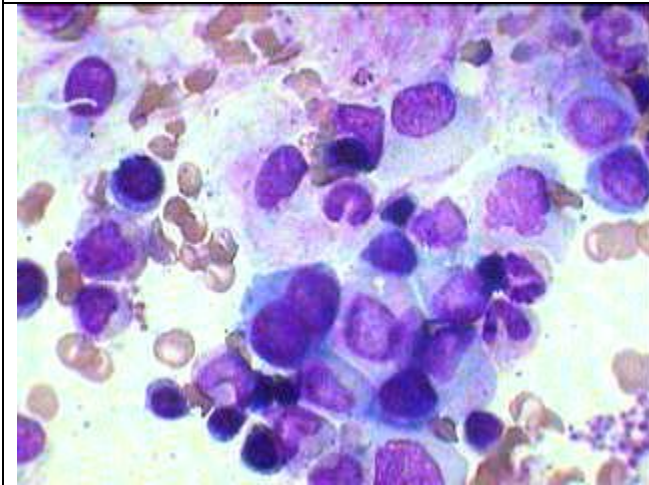
### Hodgkin Disease as seen in BM aspiration



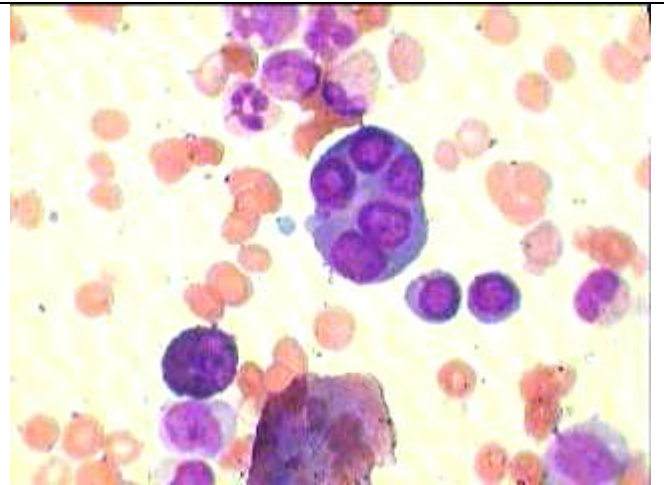
Hodgkins-Disease -Focal Infiltration in BM Aspiration-.Smear giemsa stain under HP



One RS cell and another Variant (at the top) and one binucleate plasma cell at the top left in marrow aspirate.



BM aspirate showing RS cell & its variants in HD under Oil Immersion.



Five Nucleated cell –most likely Abnormal plasma cell in Hodgkins, as seen in the same BM aspirate.