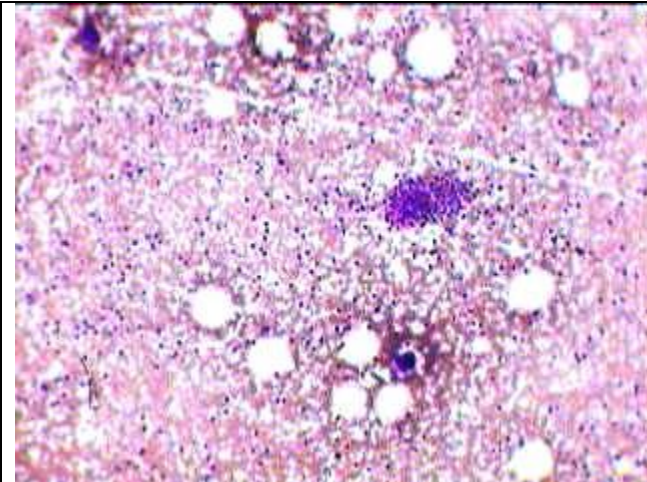
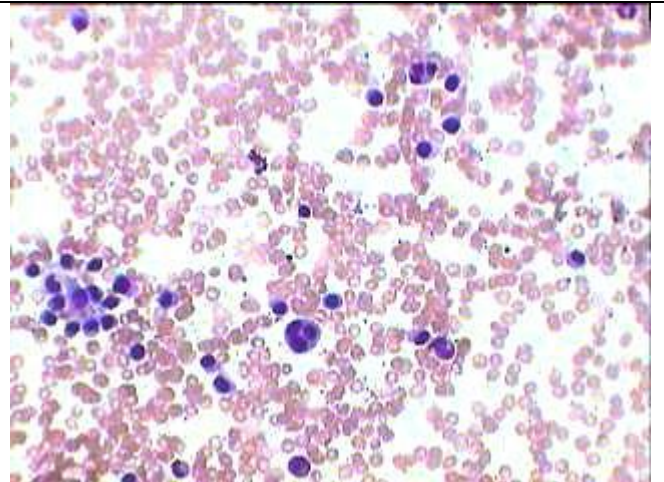


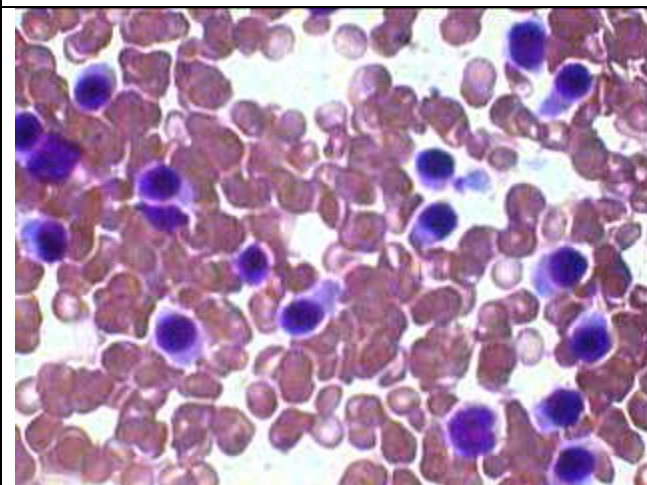
Plasmacytoid Lymphoma Infiltrating B.Marrow



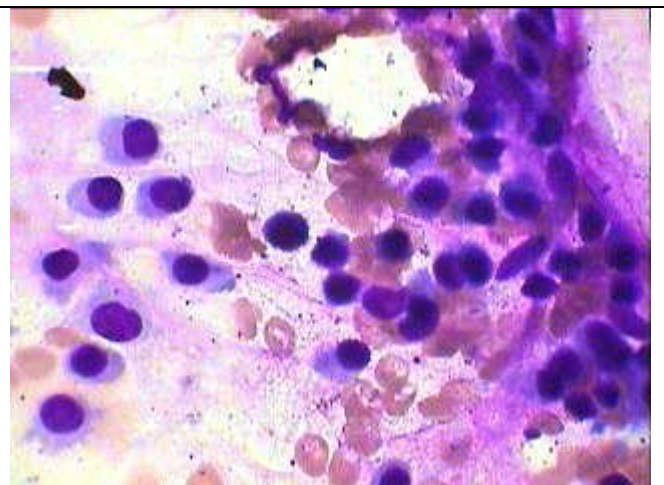
LP view of the BM aspirate showing a focal infiltration by a group of small cells



HP view of the BM aspirate showing both focal and diffuse infiltration by plasmacytoid cells. One trinucleate cell at the bottom



BM Aspirate showing diffuse infiltration by the underlying Plasmacytoid lymphoma



Same aspirate showing focal (on the right) and diffuse infiltration (on the left) by the Plasmacytoid Lymphoma cells.