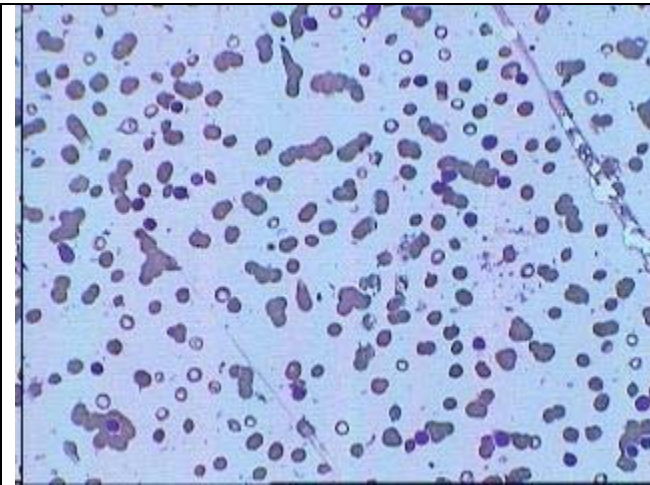
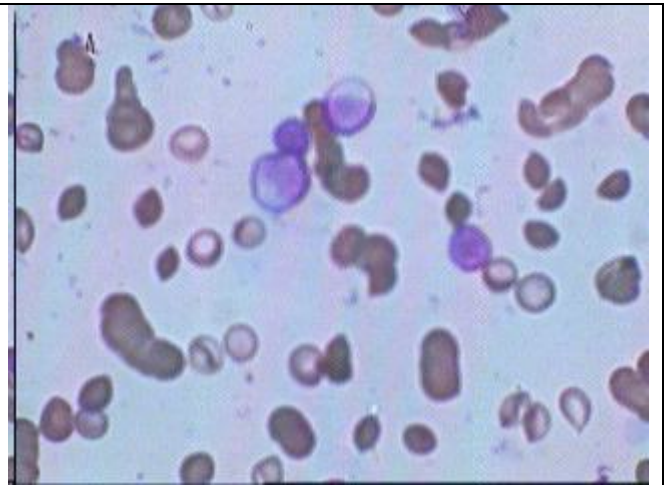


Diffuse & Heavy Infiltration by B-Cell Lymphoma in the Marrow

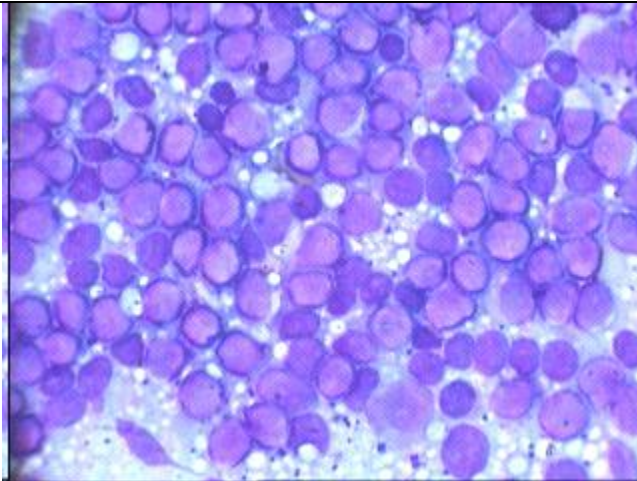
This unusual case in a 55 years old lady is presented because of Hyper-gamma globulinemia (> 8 Gm%) with Positive M- Band on Electrophoresis & hence Clin.diagnosis of Myeloma. But Marrow exam. shows, it to be Malig.Lymphoma and how much different from Myeloma.



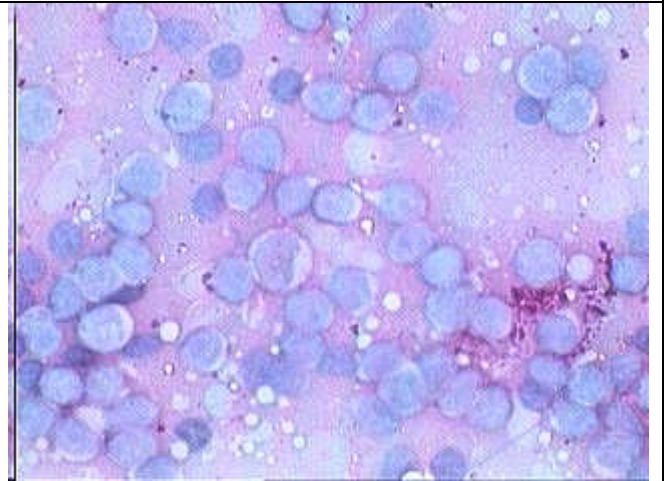
HP view showing Red cell Rouleux formation along with Immature Lymphoid cells in BM aspiration smear.



Oil Imm View of the BM Asp.smear as on the left showing Hypocellularity & Red cell Auto-agglutination



B.M.Biopsy Imprint smear showing Heavy infiltration by Lymphoma cells.- Giemsa Stain



Same as on the left -PAS Stain showing some dot PAS positive Lymphoid cells