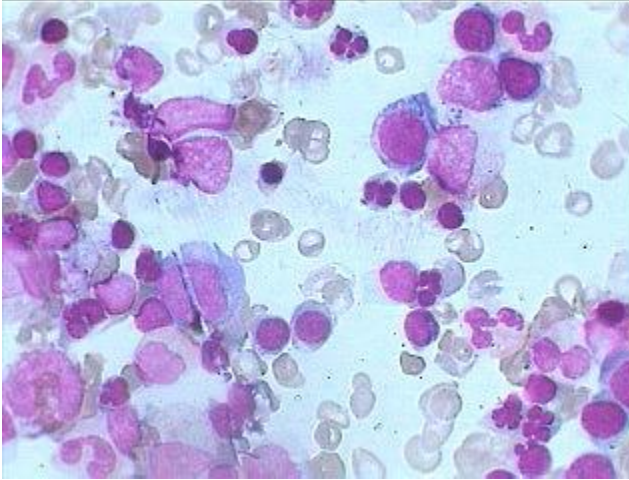




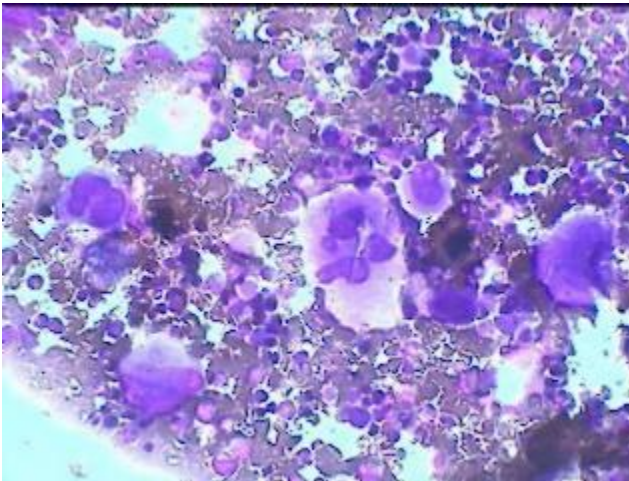
Dysplastic Haemopoetic cell lines



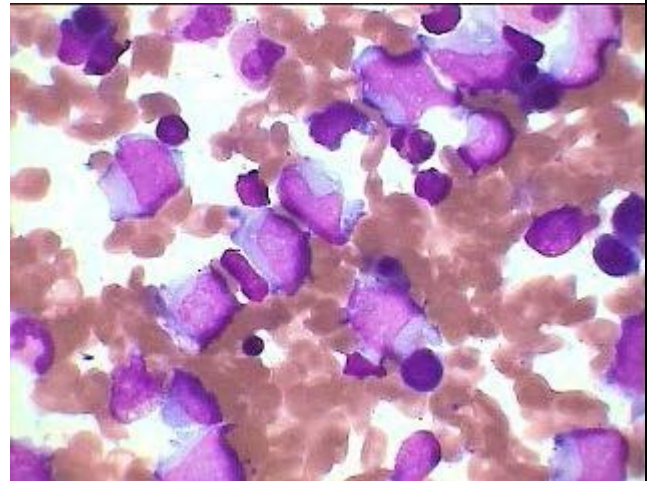
Dyserythropoetic cells at bottom right and upper central area



Dysplastic-(Nuclear configurations & nuclear hole) in more mature myeloid cells at the centre



Dysplastic megakaryocytes, most of which are sterile (non-functional)



Dysplastic Immature myeloid –monocytoid blast precursors.