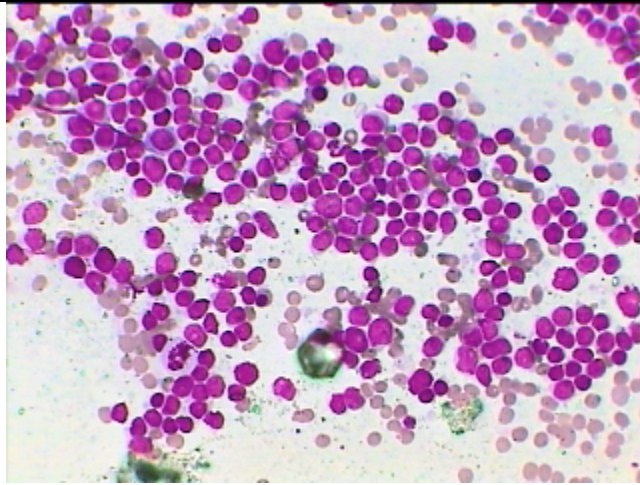
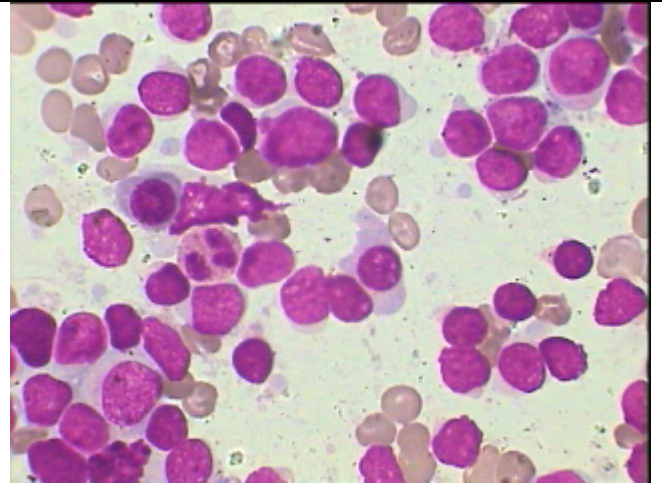




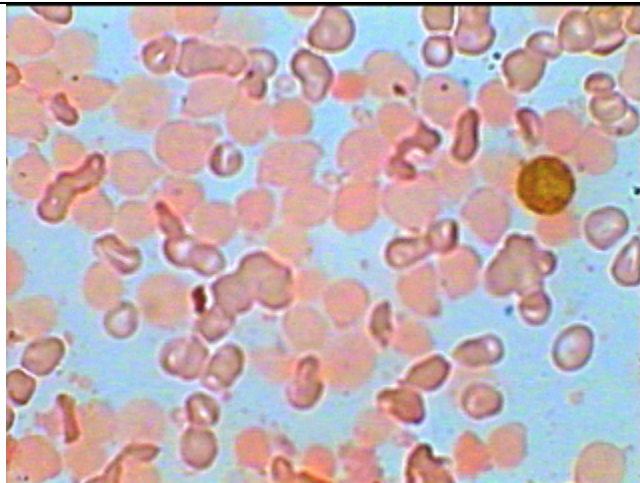
Acute Leukemia Type- M-0



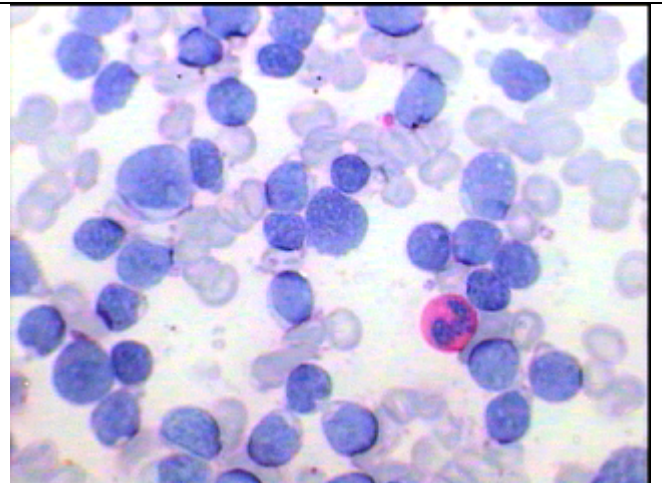
HP view of BM smear packed with Leucoblasts showing mild pleomorphoism – Acute Leukemia.



Same as on the left under Oil Imm. Giemsa stain Medium to large leucoblasts having scanty basophilic cytoplasm and indistinct nucleoli. Acute Leukemia most likely Myeloid.



Same smear with MPO stain showing one strong peroxidase positive mature myeloid cell and two weak positive Immature (Blast) . Most likely type M-0



This smear stained with PAS showing all the blast with-out any Dot PAS positivity and one neutrophil having diffuse [positivity