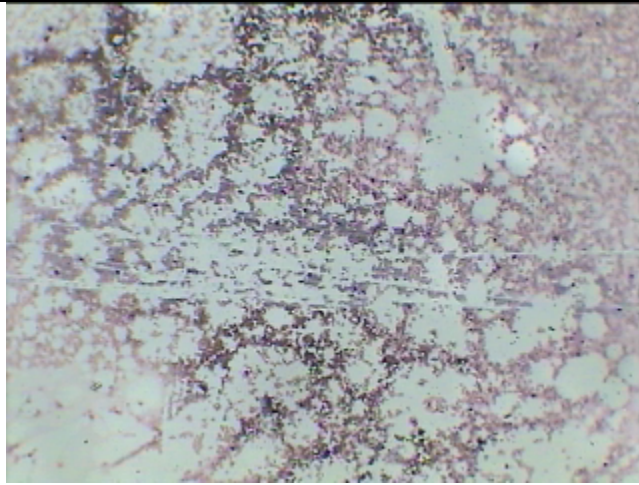
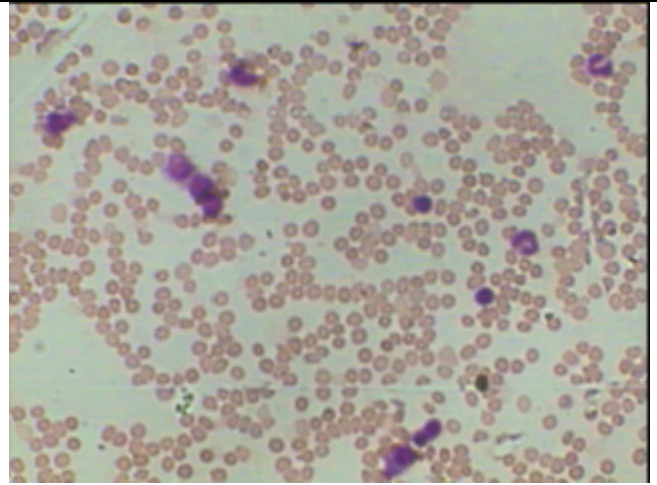




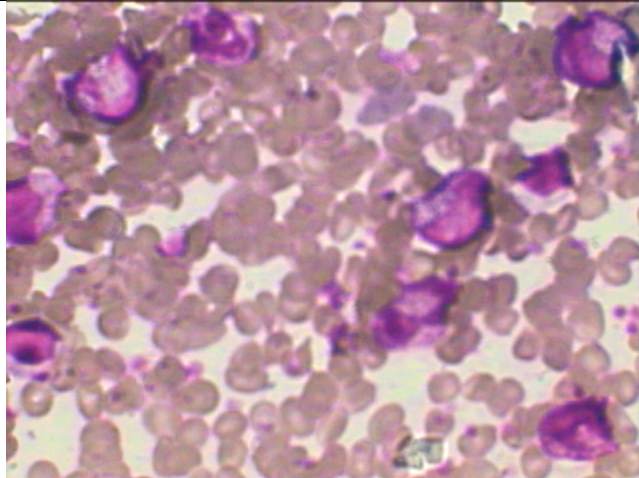
BM Aspiration and Biopsy showing Agnogenic Myeloid Metaplasia



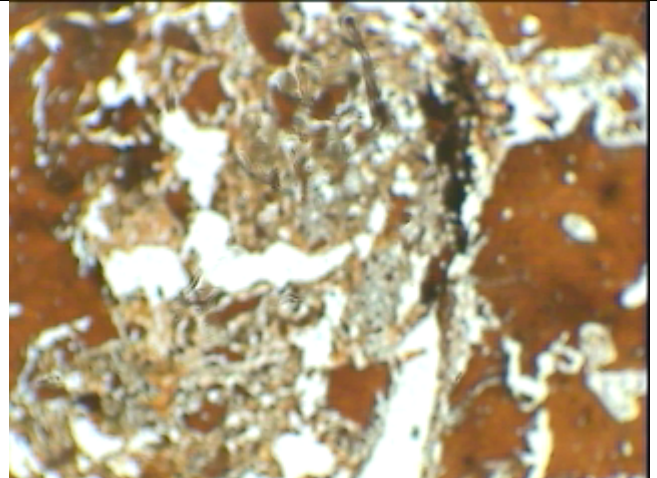
Marrow Biopsy Imprint in L.P view showing Fat spaces with very sparse cellularity



Marrow Biopsy Imprint in H P view showing Fat spaces with sparse cellularity of myeloid cells showing left shift



The same smear under Oil Immersion, Showing hypocellularity. Myeloid cells with significant left shift



BM biopsy of same case with reticulin stain showing heavy deposit of reticulin-Myelofibrosis grade -4

A patient of 77 yrs age having huge Splenomagaly with showing **WBC count of 23000/cmm with lefts shift and normal platelets on peripheral blood smear but his BM is extremely hypocellular and its biopsy images as shown above are diagnostic of Agnogenic myeloid metaplasia**