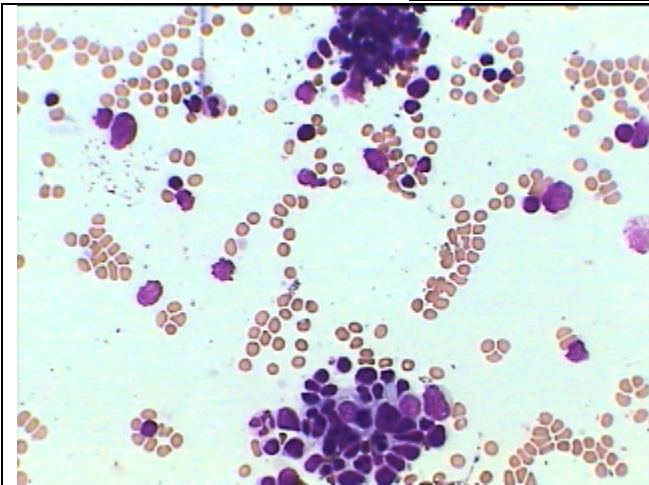
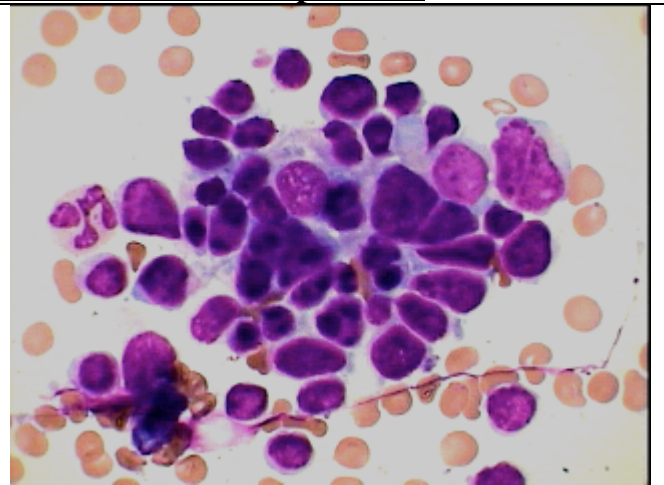




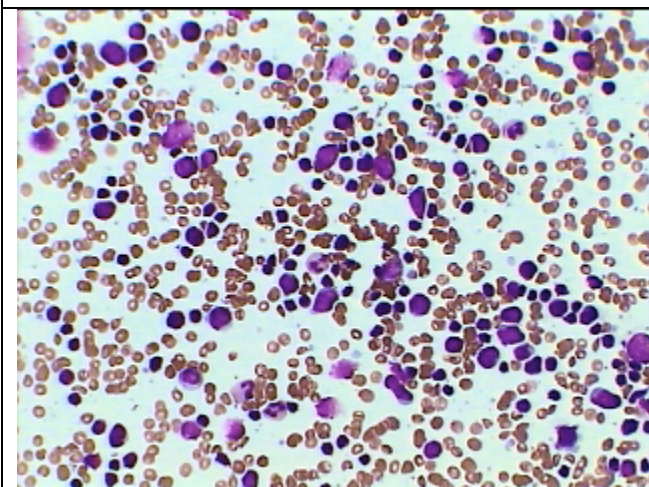
NHL- Infiltration as seen in BM Aspiration



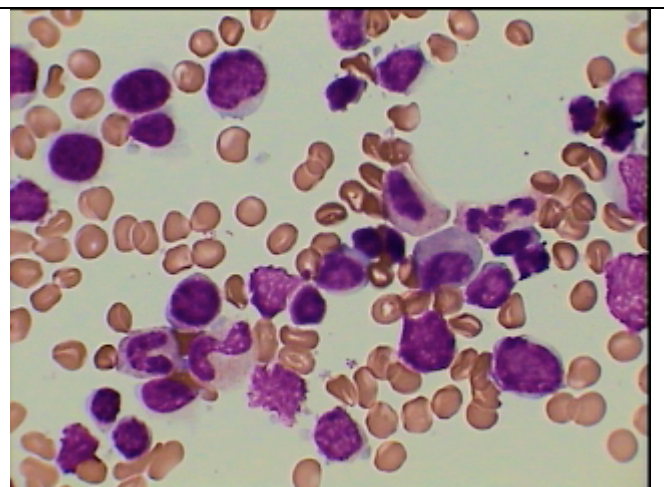
Two group of small cells in a hypocellular BM aspiration smear under Low power



A focal collection of mild pleomorphic mononuclear cells under High power view of the same as on the left



Diffuse infiltration of the BM by mononuclear cells along with normal haemopoietic cells under Low power.



Same smear as on the left under High power showing moderately pleomorphic large Lymphoid cells-- NHL infiltrating the BM .