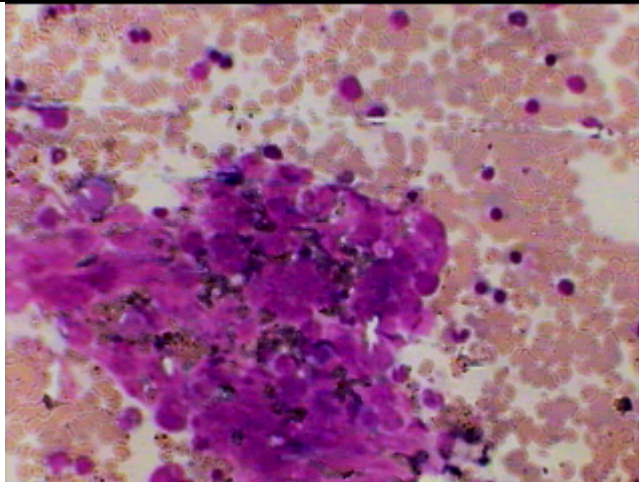
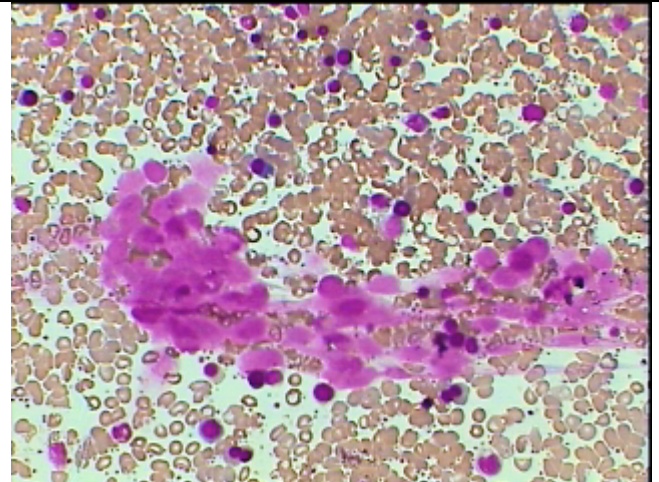


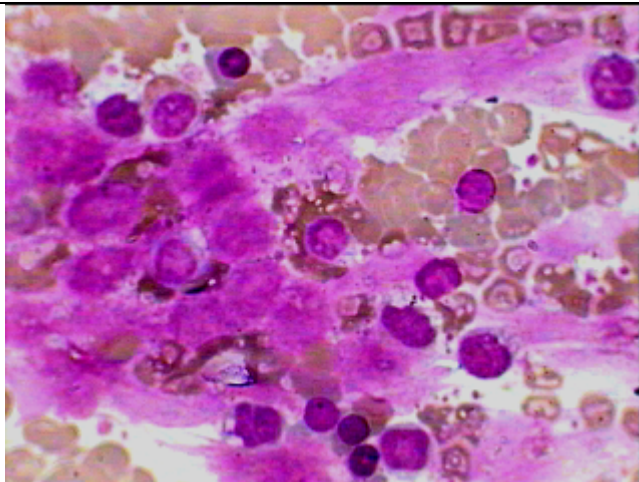
Secondaries as seen in the BM asp.S smear



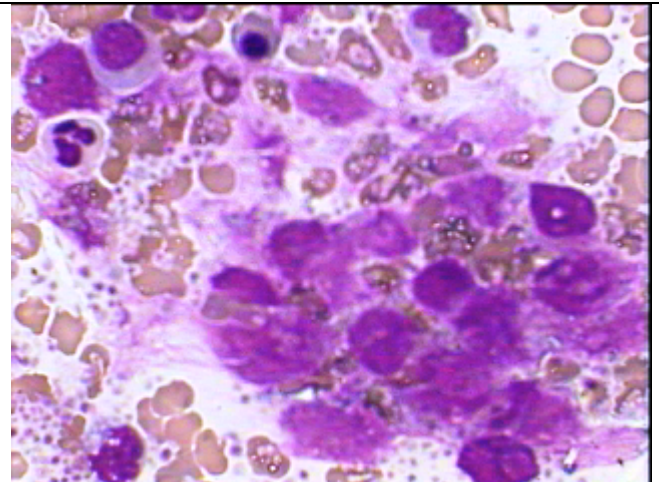
Two focal collection of large nonhaemopoetic cells in the aspiration of BM along with other haemopoetic cells



A trail of Nonhaemopoetic cells in the BM aspiration at the tail end of the smear



A group of large cells with confluent morphology (showing mild degenerative changes) under Oil Imm.



Highly pleomorphic neoplastic cells from primary tumor infiltrating the BM along with normal haemopoetic cells and Thrombocytosis.