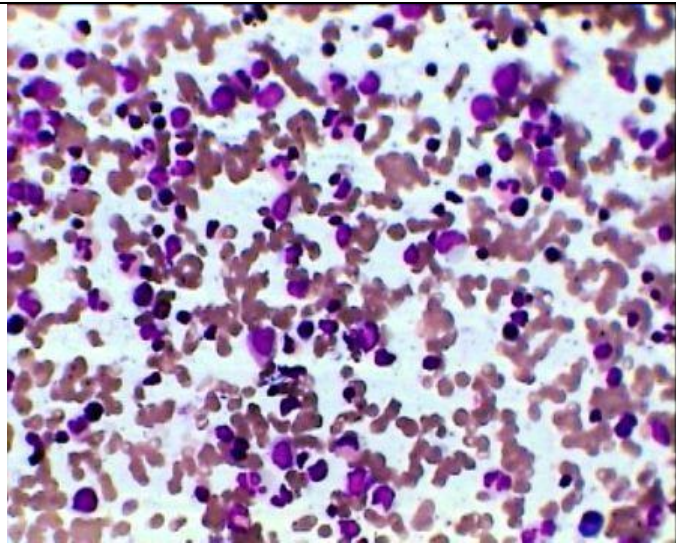
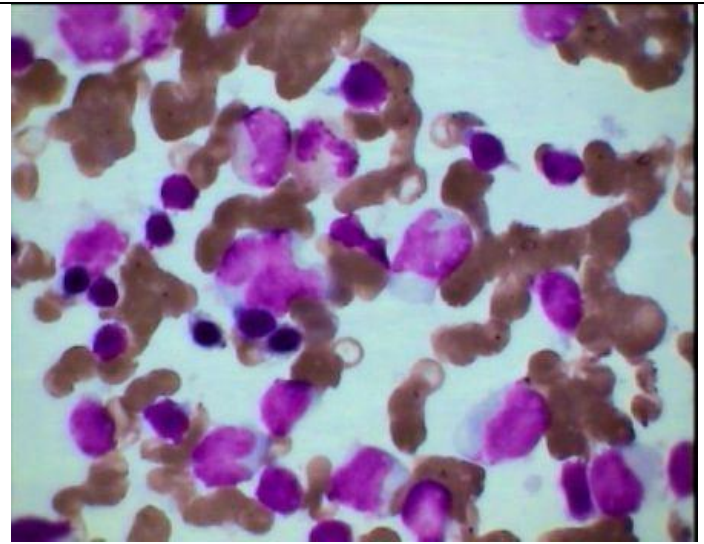


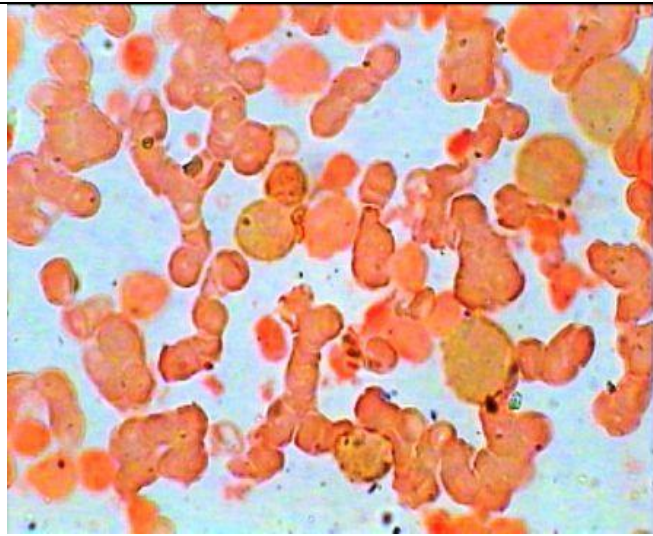
T Cell ALL showing Dot PAS Negativity



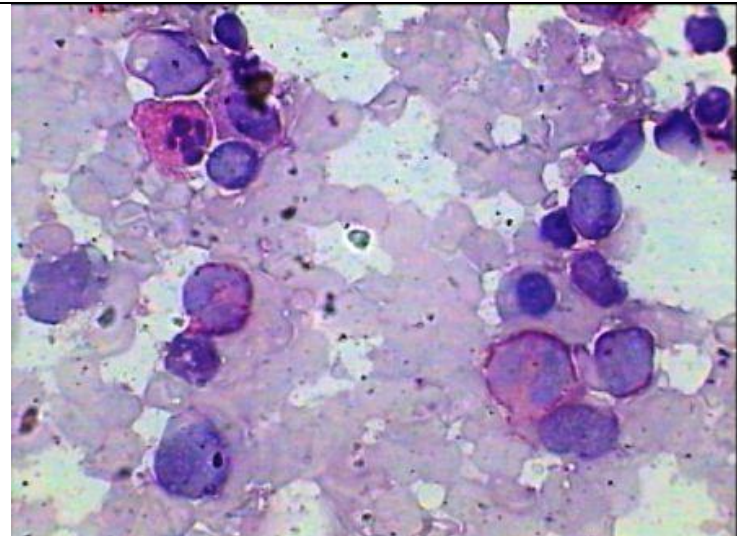
HP view of BM aspiration smear showing numerous leucoblasts and thrombocytopenia-Acute leukemia



Same smear as on the left under Oil showing highly pleomorphic leucoblasts with variable amount of nongranular cytoplasm. Morphologically appear to be Myeloid Blasts, but-cytochemical stain below shows-



MPO stain of the same patient showing peroxidase negative leucoblasts



PAS stain of the same case showing mild diffuse positivity in a neutrophil and metamyelocyte while all the leucoblasts are negative for Dot PAS stain

This adult female had massive splenomagaly with high leucocyte count having blast morphology and found to be positive for CD3 on immunophenotyping while negative for CD-19 /20 and myeloid markers.