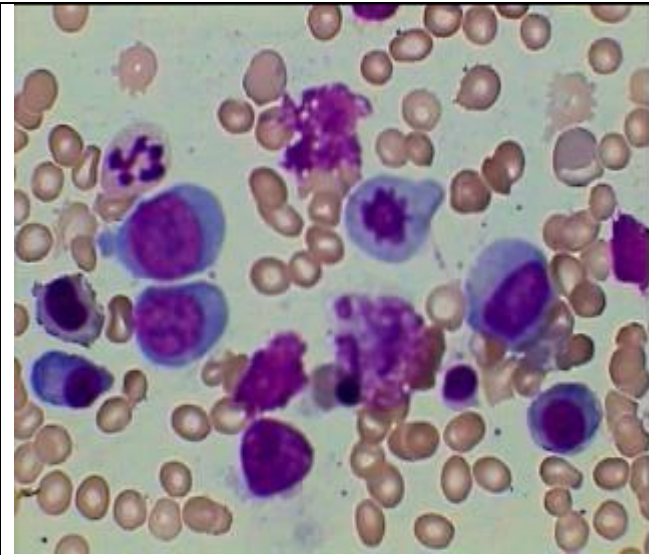
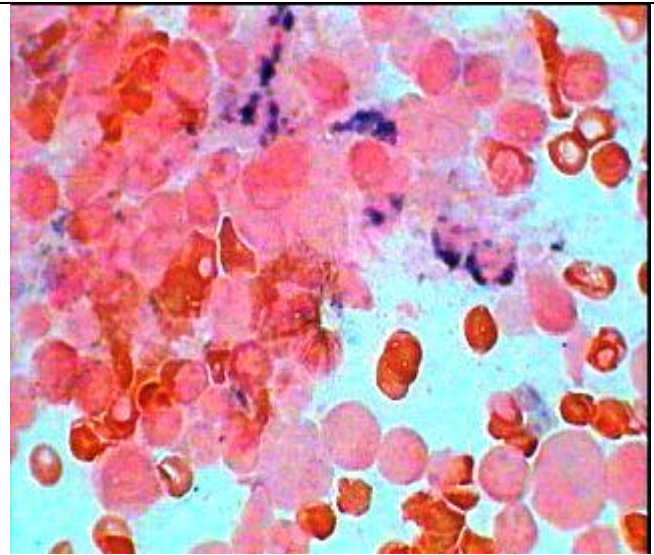


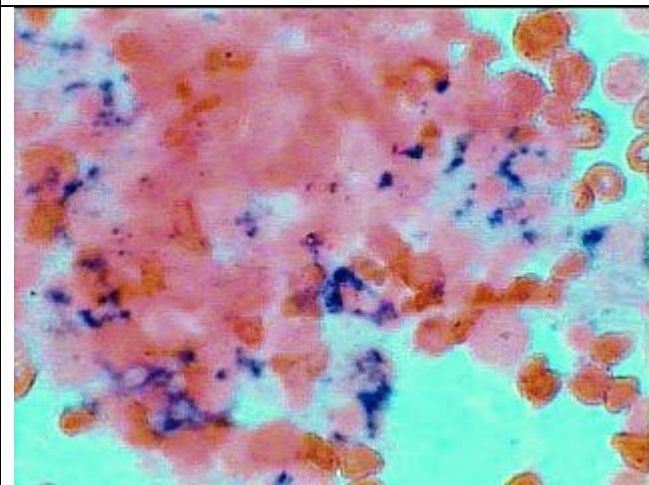
Myeloid Dysplasiaq-(RARS) progressing to AML-Type M-6



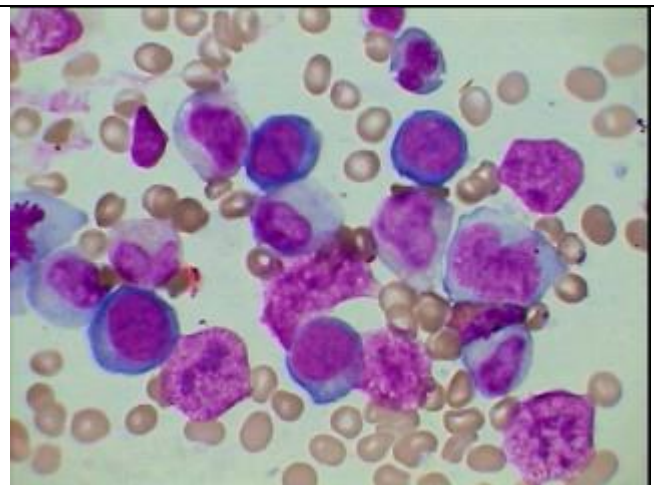
BM aspiration smear Giemsa stain showing Mgaloblastoid hyperplasia along with two Myeloid blast- With peripheral pancytopenia it was diagnosed--Early Myeloid Dysplasia



Prussian Blue stain:- Upper right side showing 2-3 Ring Sideroblasts of the same BM as on the left—MDS-Type RARS



Iron Stain of the BM showing significantly increased iron along with plenty of sideroblasts and a few Ring Sideroblasts



Same patient after another 6 months showing progression to AML- M6 having almost equal no. of myeloblasts and Erythroblasts