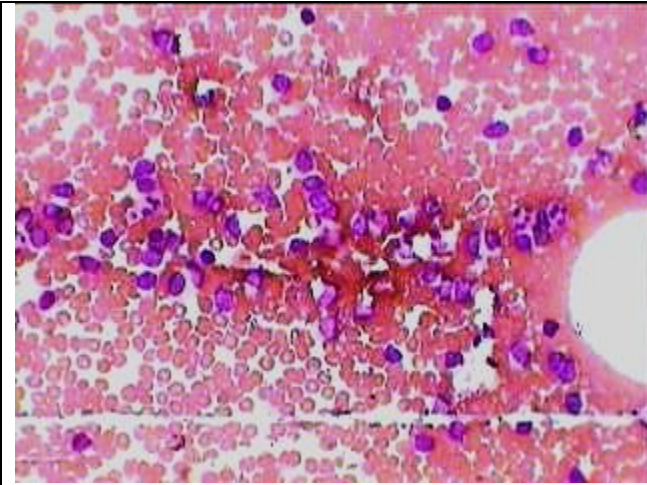
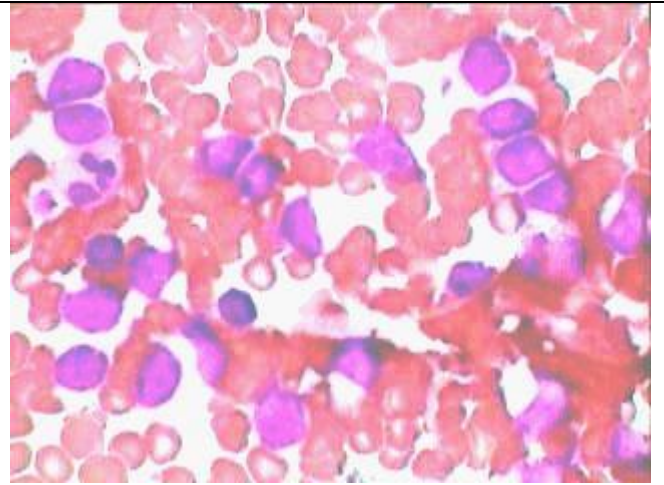


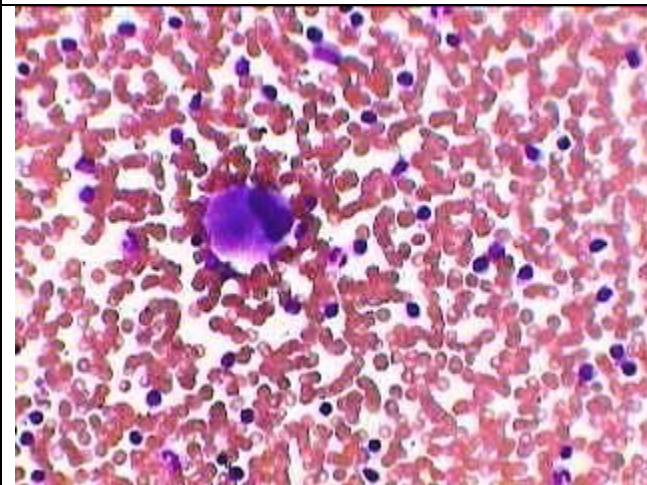
Leukemization of Large cell-Lymphoma (NHL)



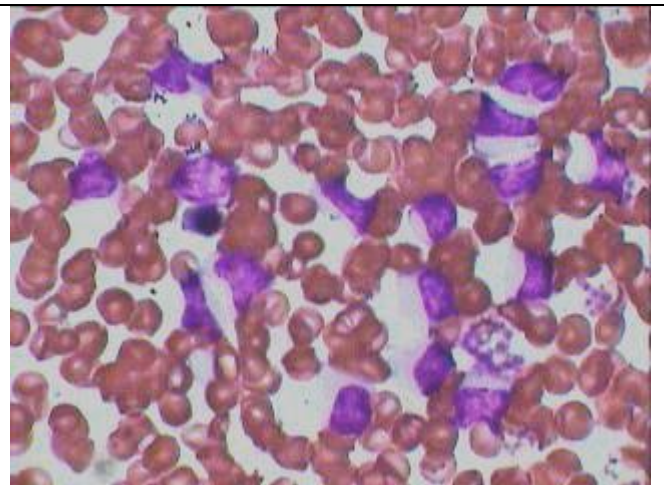
PB Smear showing Leukemization of Lymphoma (NHL) in peripheral blood HP view..



Same peripheral blood smear as on the left under oil immersion



BM aspiration smear showing diffuse distribution of Lymphoma cells along with a megakaryocyte HP view.



Same smear of the BM as on the left under oil immersion, showing a erythroblast at the left of center.

Biopsy of Cervical Lymph node showed Large cell Lymphoma (NHL) and at that stage his peripheral blood and BM examination did not show any evidence of invasion.. After about 8 months the repetition of the BM and peripheral blood showed the above picture.