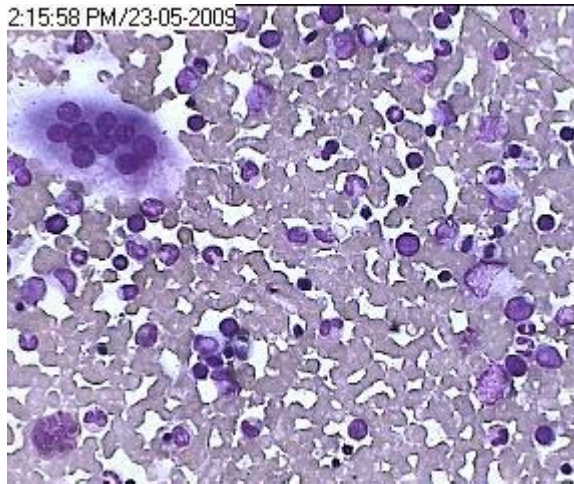


Congenital Acute Myeloid Leukemia



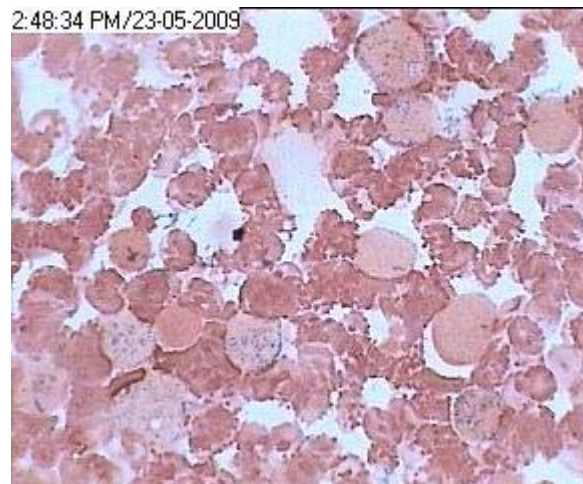
BM aspiration in high power showing one osteoclast in a 3 month old baby with congenital Acute leukemia.



Congenital leukemia (AML) showing 5 leucoblasts and 2 promyelocytes with another 6 more mature myeloid cells and 4 erythroblasts.



Congenital Acute Myeloblastic leukemia showing three Monocytoid blasts (a conspicuous feature in Cong.AML) along with about 8 Myeloid-blasts.



MPO stain showing peroxidase positivity in about 1/3rd of the blasts in the Congenital AML same patient as shown on the left.

Note:-This baby had violaceous dermal patches as skin infiltration commonly seen in Congenital AML