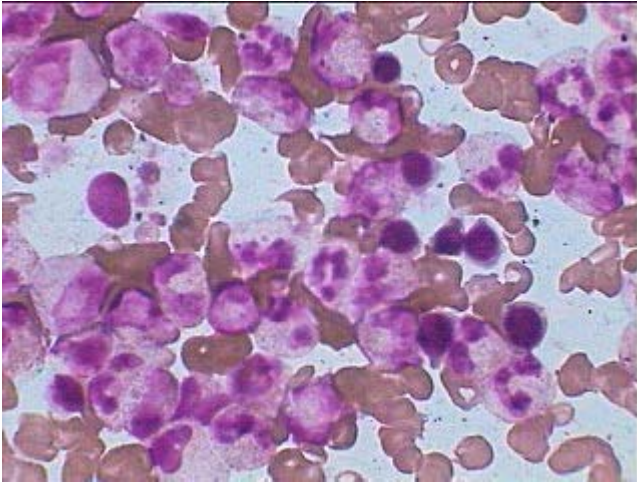
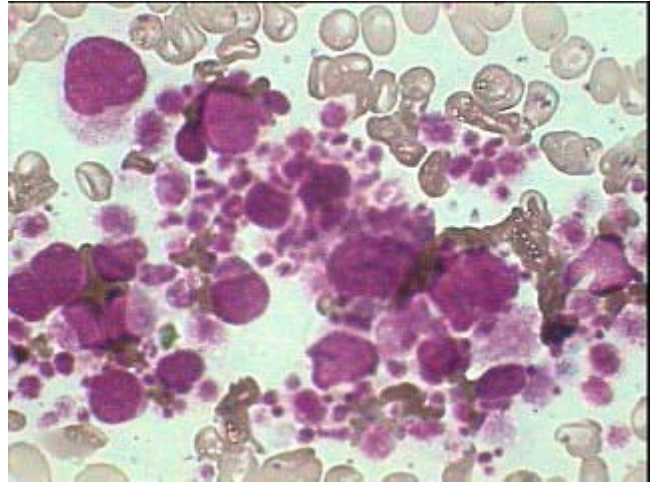


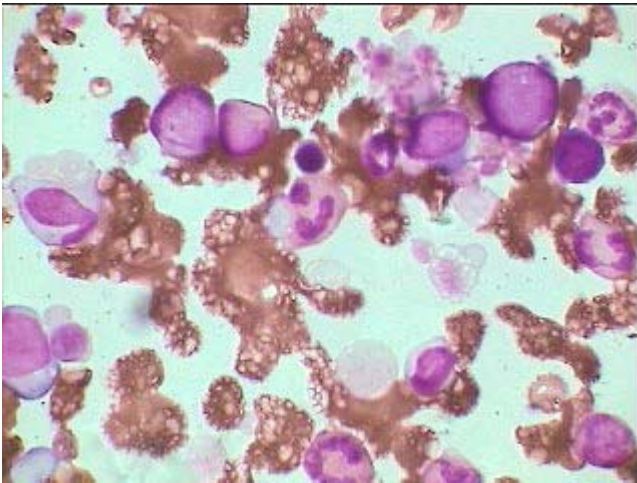
Chronic Myeloid Leukemia (CML- CMPD)



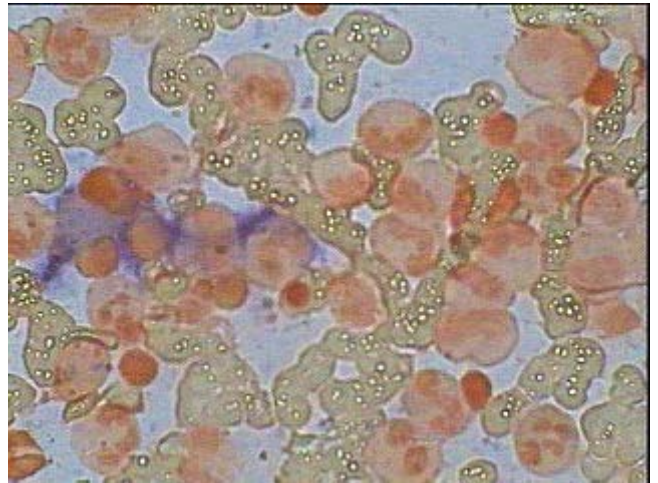
CML Chronic Phase- packed with predominantly more mature myeloid cells, occasional myeloblast, seven erythroid precursors and small group of thrombocytes.



Chronic Granulo-Megakaryocytic Leukemia (CGML) showing predominantly highly pleomorphic platelets along with myeloid cells.



CML in Blast crisis showing almost equal number of more mature myeloid cells and myeloblasts with a bunch of platelets.



LAP stain of CML-CP showing only 3-4 myeloid cells (Left of center) having poor LAP score of 1-2 in each cell while all other cells being negative having zero score. Total LAP score is <10 .