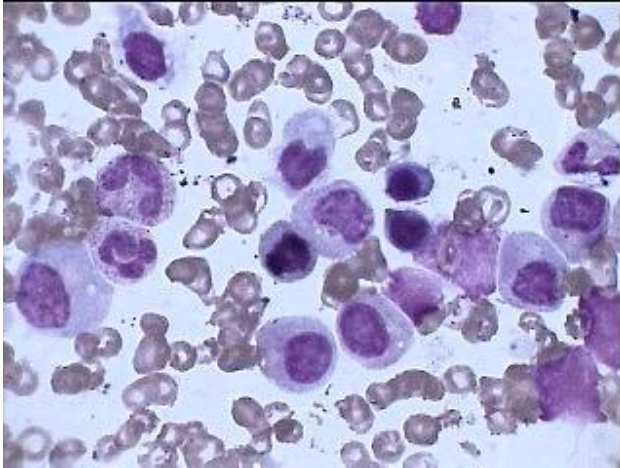
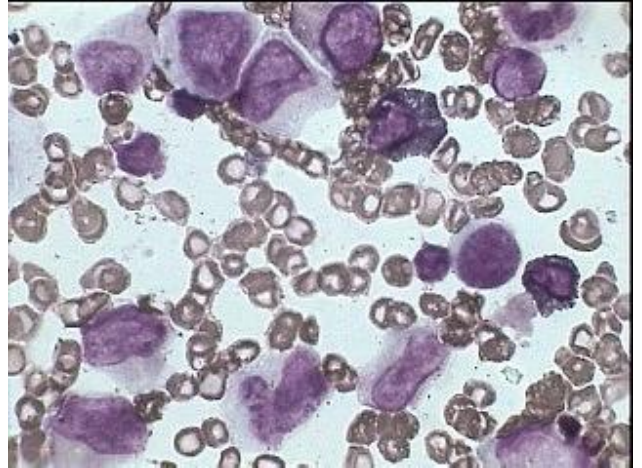


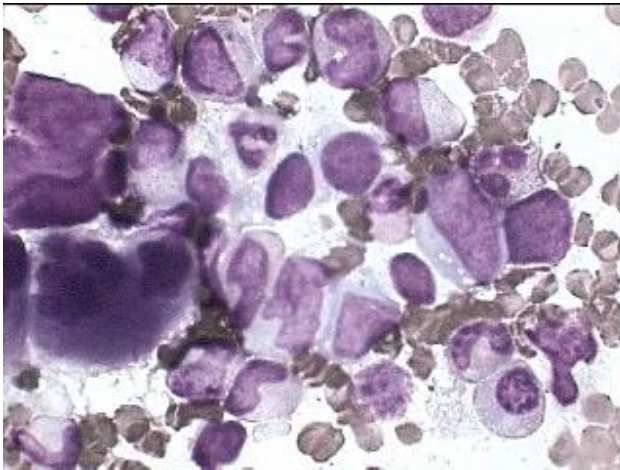
Myeloid Dysplasia Type-Chronic Myelo-Monocytic Leukemia (CMMOL)



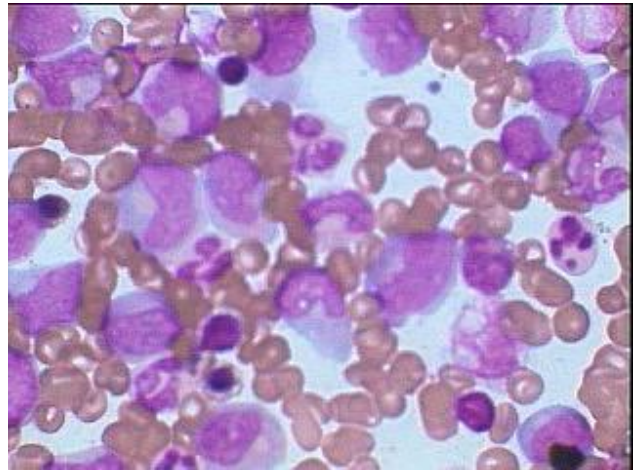
CMMOL, showing erythroid precursors along with Myeloid & monocytoid precursor cells -all showing evidence of mild dysplasia .



Predominantly Immature Dysplastic myeloid and monocytoid cells in CMMOL. Often such cells aptly called Paramyeloid cells.



Dysplastic megakaryocyte along with immature and mature myeloid & monocytoid cells showing dysplastic morphology. This field is almost devoid of erythroid precursors & so CMMOL is considered as part of CMPD rather than MDS.



Chronic Myelo-Monocytic Leukemia (CMMOL) perhaps transforming into AMMOL-showing, both myeloid and monocytoid blasts with few more mature cells & few erythroblasts.