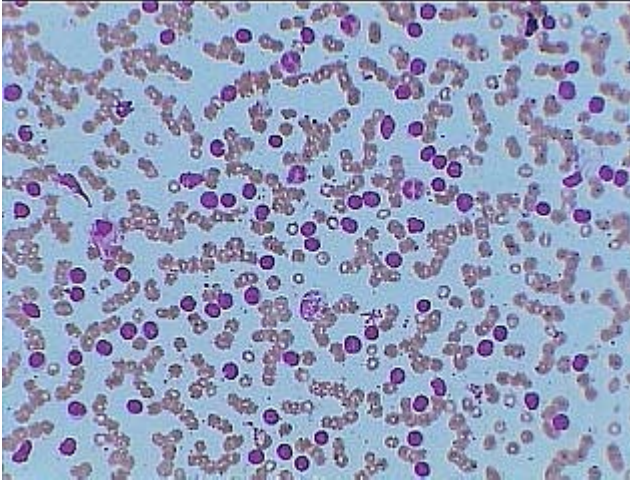
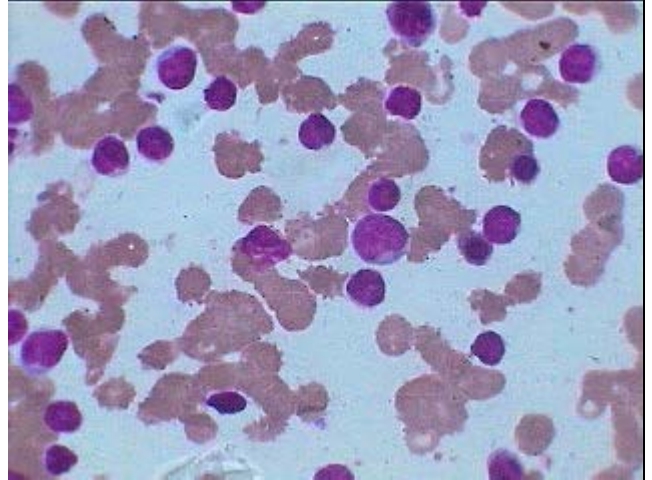


Chronic Lymphatic Leukemia



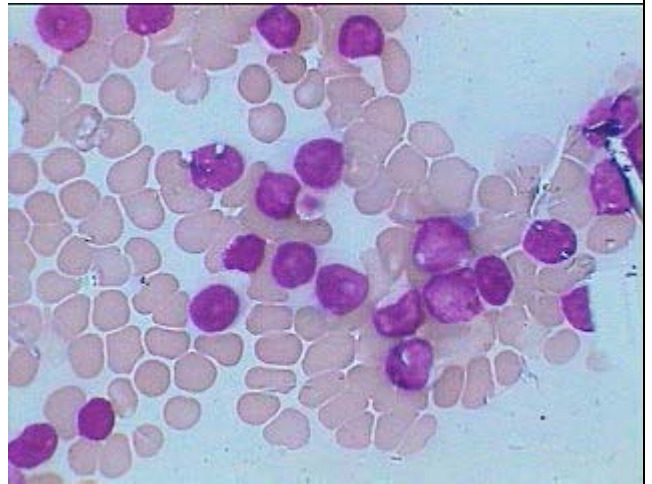
PB Smear of CLL under HP Giemsa stain, showing more than 90% cells as mature lymphocytes (Typical CLL).



Well differentiated CLL under oil Immersion. All the cells are mature lymphocytes with scanty basophilic cytoplasm. Also showing red cell autoagglutination –AI.Haemolytic anaemia.



Poorly differentiated CLL under Oil Immersion. More than 1/3 rd. cells are large relatively immature lymphoid cells (prolymphos) along with two degenerated lymphocytes typical of CLL.



CLL- nearly well differentiated with slight heterogeneous population, having less than 10% cells being relatively immature.