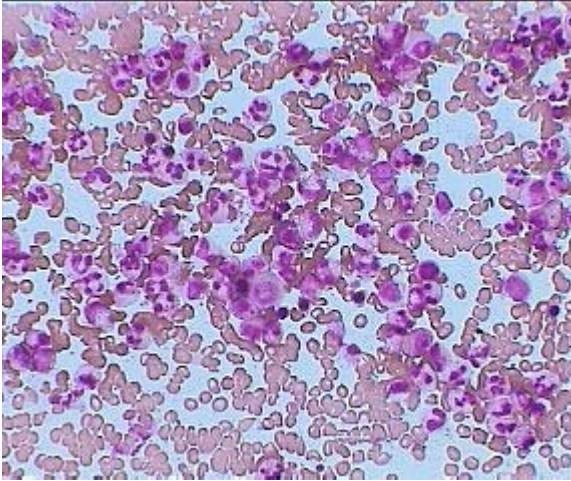
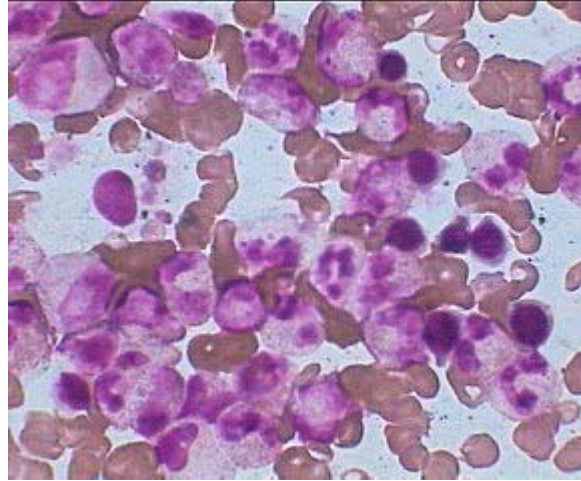


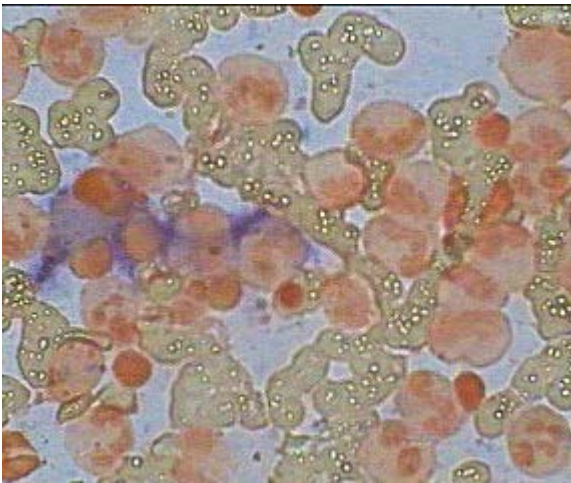
## Chronic Neutrophilic Leukemia



P.B Smear showing marked Neutrophilic leucocytosis under HP from a case of Chronic neutrophilic Leukemia.



BM of Chronic Neutrophilic Leukemia showing almost all mature neutrophils without myeloid precursors except 2 myelocytes with few macro platelets and normoblasts.



LAP Stain of Chronic Neutrophilic Leukemia showing very faint positive stain in 3 neutrophils out of about 30 mature neutrophils, total LAP score being less than 12.