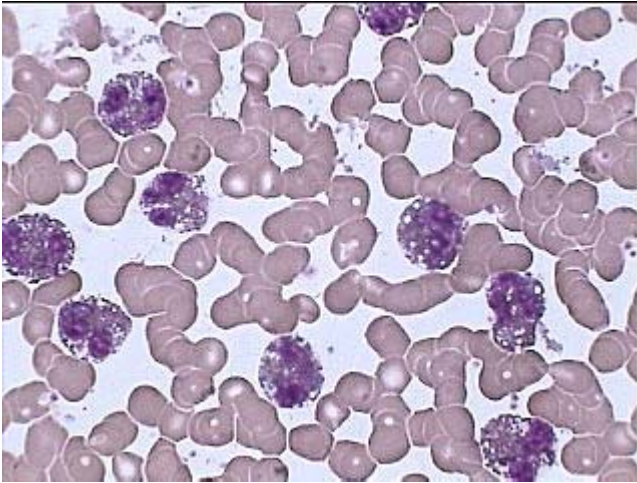
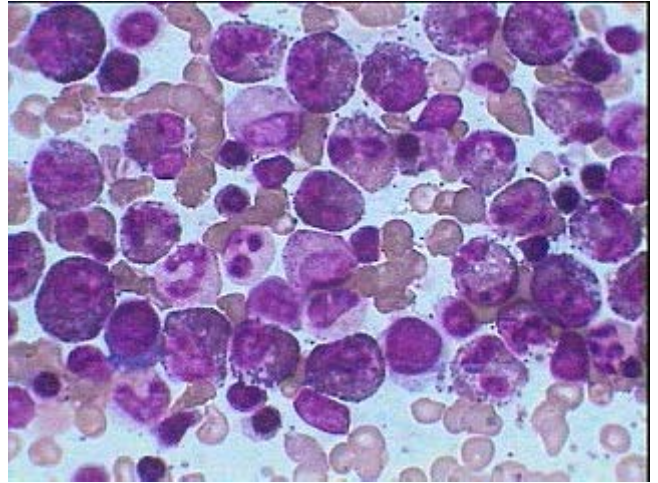


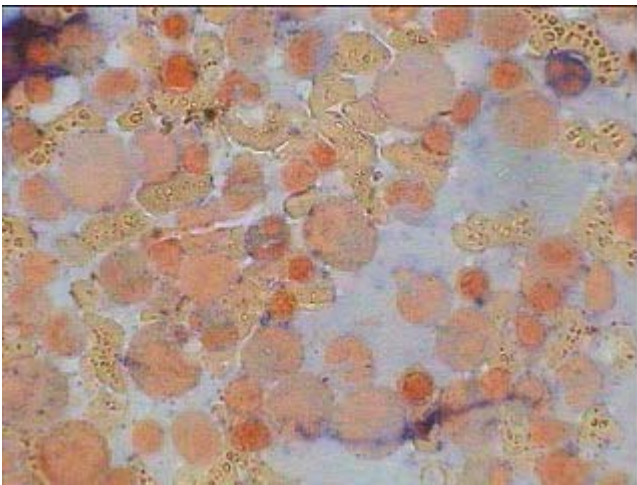
Chronic Eosinophilic Leukemia



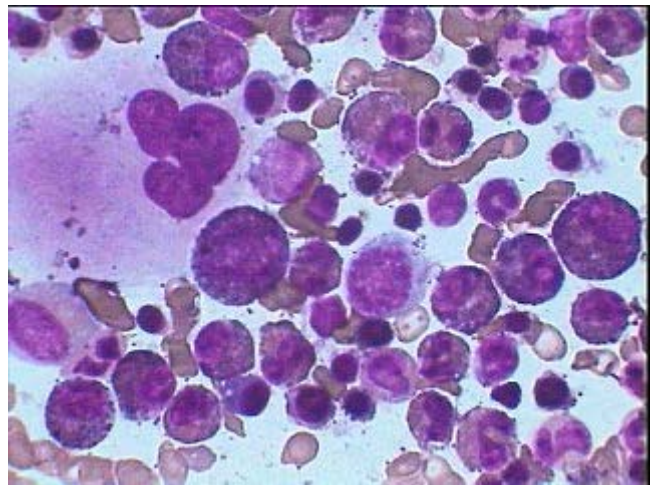
PB Smear showing all mature Eosinophils from a case of Chronic Eosinophilic Leukemia. Some of these show vacuolization. Red cells and platelets appear normal



23 Eosinophils and its precursors along with 3 neutrophils in BM of Chronic Eosinophilic Leukemia. There are no leucoblasts while the Erythroid precursors appear normal.



BM LAP stain showing marked eosinophilia with very low LAP score (one showing 3 and another showing 1 LAP score out of about 35 cells) totaling about 16 score among 100 leucocytes.



BM view of Chronic Eosinophilic Leukemia showing 1 megakaryocyte, 16 eosinophils including its precursors, 4 neutrophils, 1 myeloblast and normal erythropoiesis.