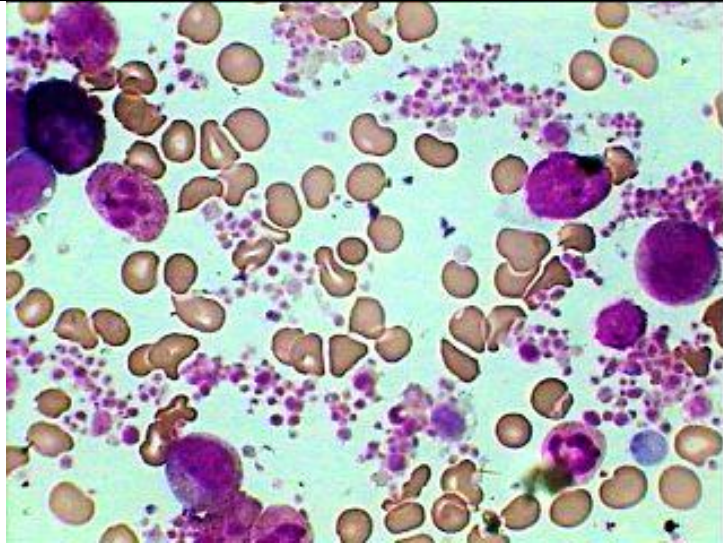




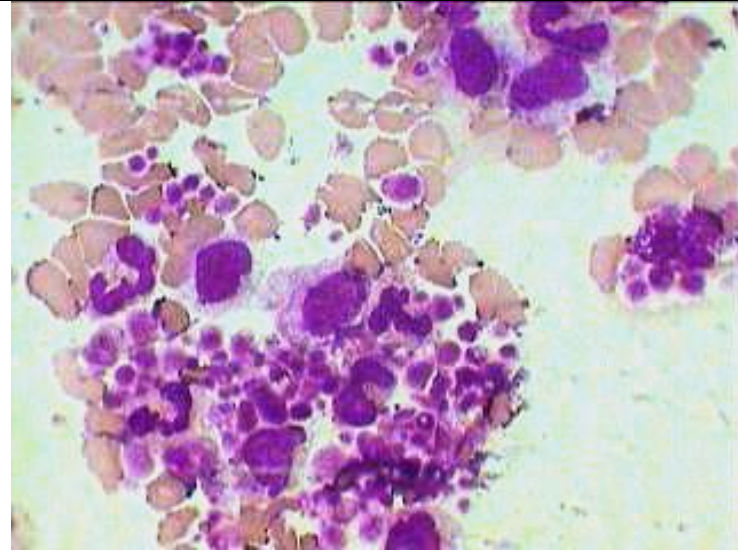
Estd. 1999

www.pathoindia.com

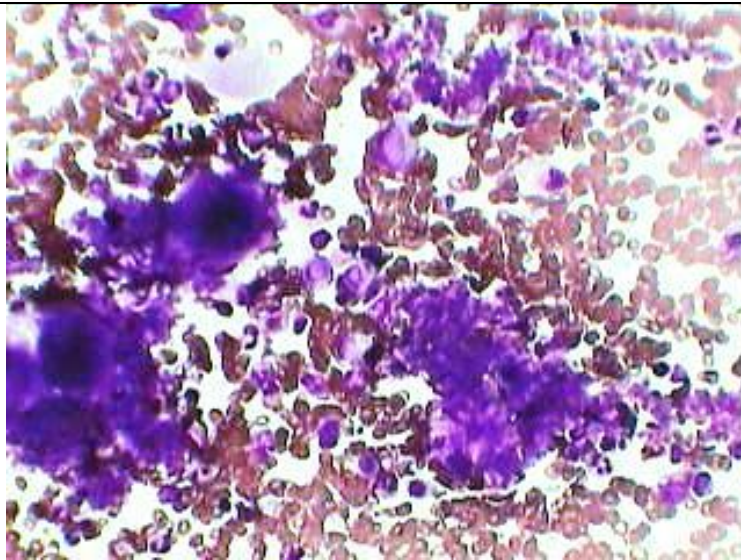
Essential Thrombocythemia:- Haemtology cell counter showing lower platelet count of 5.7 lacs/cmm but actually the platelets as counted by manual method is more than 10 lacs/cmm because Macroplatelets are not enumerated with normal size platelets.



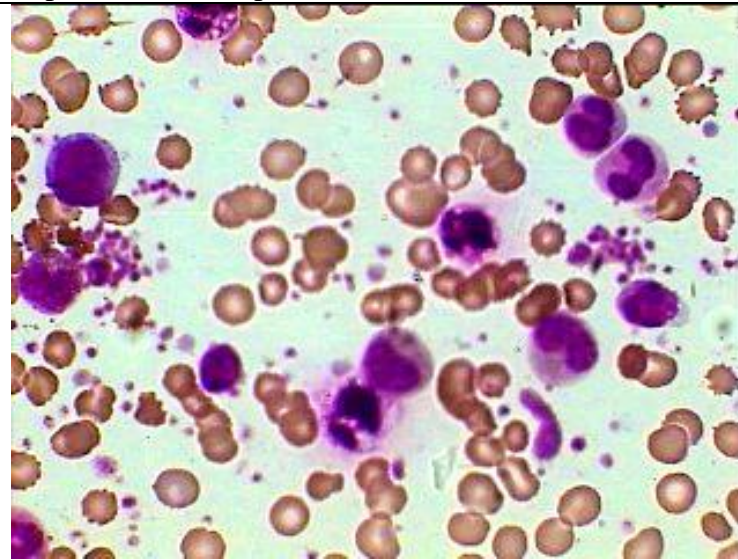
BM asp Smear showing significant thrombocytosis with mild to moderate pleomorphic platelets.



Another smear under Oil Immersion showing significant thrombocytosis with marked variation in size and shape of platelets (Macroplatelets)



Hypermegakaryocytopoiesis/thrombocytosis (Essential in thrombocythemia.) with highly pleomorphic platelets surrounding megakaryocytes.



Peripheral blood smear showing accelerated thrombiopoiesis with a megakaryocytic fragment and bunch of megaloplatelets.