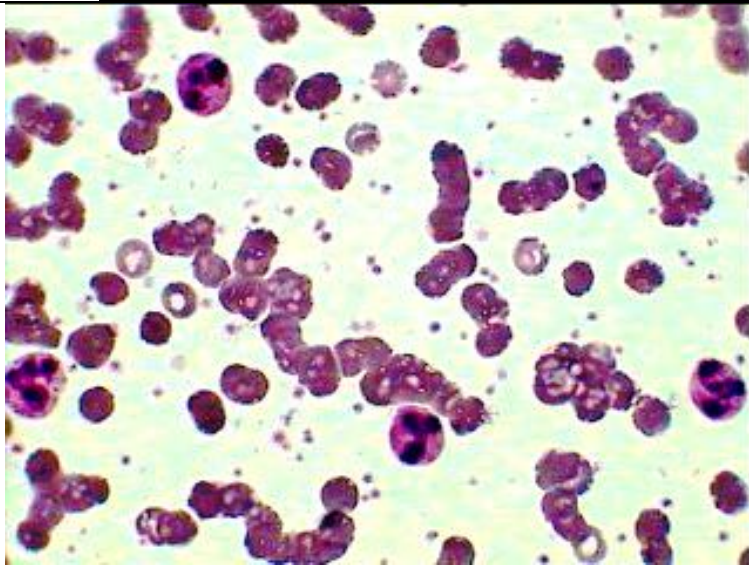


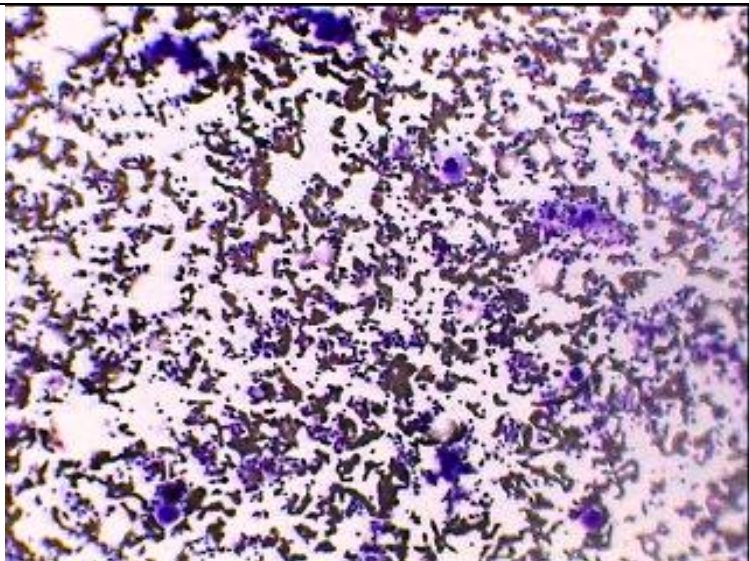
**Spurious low Platelet count by cell counter
because of EDTA induced aggregation**



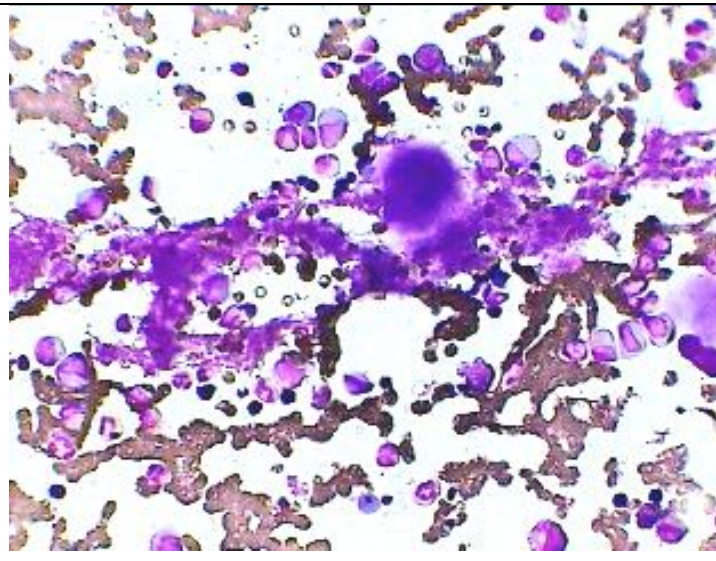
PB Smear (prepared from direct blood without anticoagulant) showing diffusely distributed platelets—significant thrombocytosis



Same case as on the left-- peripheral blood smear prepared from EDTA blood-.showing conspicuously present platelet aggregates



Same patients **BM aspiration** under LP showing megakaryocytes surrounded by sheets of platelets—Thrombocytosis



Same case as on the left under oil immersion showing sheets of platelets.along with a megakaryocyte.

Note:-Spurious Low Platelet count as revealed from Cell counter (2.4 lacs/cmm) but in reality it was found to be more than 6 lacs/cmm by manual count..Reason being EDTA induced Aggregation of platelets preventing true platelet count by cell counters.